

УДК 621.777:669.231.7

Development Calculation Methods of Technological Parameters for Receipt Deformed Semi-Finished Products of Gold Based Alloys of Probe 585

Sergey B. Sidelnikov*, **Nikolay N. Dovjhenko,**
Olga S. Lebedeva, Sergey V. Belyaev,
Julia D. Gailis and Evgeniy V. Feskov
Siberian Federal University
79 Svobodniy, Krasnoyarsk, 660041 Russia¹

Received 09.11.2012, received in revised form 16.11.2012, accepted 23.11.2012

Developed algorithms, software, and calculation methods of deformation regimes and power parameters for cold bar rolling and drawing of rods and wires of gold alloys 585 standard. Obtain a formula for the calculation of the contact area during rolling in calibers similar in form to the rhombic. Presented the results of analysis factory regimes and proposed new routes of rolling and drawing, which have passed tested to obtain commercial pilot batches of jewelry chains.

Keywords: golden alloys, rolling, drawing, mechanical properties, deformation regimes, stress, contact area, tension.

Development of technologies for implementation of new alloy compositions based on precious metals, alloyed with elements that improve their properties, on one side caused by expansion of the range of jewelry, associated with an increase in the color palette and the sophistication of the elements, that constitutes the entire finished product, on the other side - higher quality requirements. Actual also is the reduction of the harmful effects on human health of some metal-allergens included in the standard alloys. Perspective in this regard are alloys of gold 585 standard includes a small addition of ruthenium, rhodium, indium (as a modifier), provide a uniform fine-grained structure, increasing the level of mechanical properties and allowing to produce jewelry production by casting and metal forming [1].

Determining factors to get a quality finished jewelry products are technological regimes and power parameters for bar rolling mills type Famor TL12T and BILER mark INVIMEC [2] and technological parameters and kinematic characteristics of the process of drawing on the mill type 10NFS COMEVI [3]. In this case, great practical importance when designing technology of production the deformed semi-finished products have theoretical and experimental studies of

* Corresponding author E-mail address: sbs270359@yandex.ru

¹ © Siberian Federal University. All rights reserved

relationship of strength and plastic properties of the technological parameters of processing. This knowledge will make it possible not only to determine the power parameters of bar rolling and drawing of precious metals and alloys, but also carry out checks on allowable force used for this equipment. To identify technology and power parameters of production and analysis of factory modes production of deformed semi-finished products created algorithms and methods, including automated analysis of deformation modes and effort profiled cold bar rolling and drawing using rheological characteristics of the processed alloy.

In the process of industrial research new gold alloy 585 standard red color, held in Krasnoyarsk Facility of Non-Ferrous Metals named after Gulidov («Krastrsvetmet» JSC.), provided data on the mechanical properties, based on which received the empirical relationships for determining the values of the ultimate tensile strength (σ_b) and yield strength ($\sigma_{0,2}$) for these alloys, where the maximum amount of deformation reaches 95%.

$$\sigma_b = a\varepsilon^2 + b\varepsilon + c \text{ и } \sigma_{0,2} = a\varepsilon^2 + b\varepsilon + c,$$

where a, b, c – dimensionless coefficients characterizing the properties of the new alloys (Table 1).

For prior calculations deformation regimes of bar rolling and drawing has been applied program «PROVOL», created in the programming environment Delphi, Borland Corporation product, which is designed for operating systems Windows, GNU/Linux, Mac OS X and Windows CE.

The general structure of the program represents the following sequence: unit selection calculation, input source data; presentation of calculations in the form of tables and graphs.

The algorithm of the program includes the initial data, calculation of the geometric dimensions of the processed metal, calculation mode of breakdowns by the aisles and definition power parameters, in this case uses the methodology for determining the technological regimes rolling and drawing given in refs [3,4].

As the initial information the program includes database for equipment and alloys (Fig. 1). The database is designed to store and retrieve data, presenting information in a convenient form and automate repetitive tasks. To create a database used program products Access that allows you to develop a simple and easy data entry form, and perform data processing and delivery of complex reports.

As the output data the program generates a table of results (Fig. 2) and diagrams of dependences calculated process parameters on the number of passes.

To solve the complex problem of determining power parameters for cold bar rolling of a new gold alloy 585 standard conducted research in the laboratory for profiled two-stand rolling mill type model AMBIFILO VELOCE ROSEN 180+200×Ø130 of Italian company Mario Di Maio. Technical characteristics of the equipment are shown in Table 2.

Table 1. Coefficient to determine the strength characteristics of gold alloys 585 standard red color

Mark of alloy	Mechanical properties	Dimensionless coefficients		
		a	b	c
Red gold	σ_b	-0,001082	1,7356	446,8
	$\sigma_{0,2}$	-0,0125	3,6301	217,29

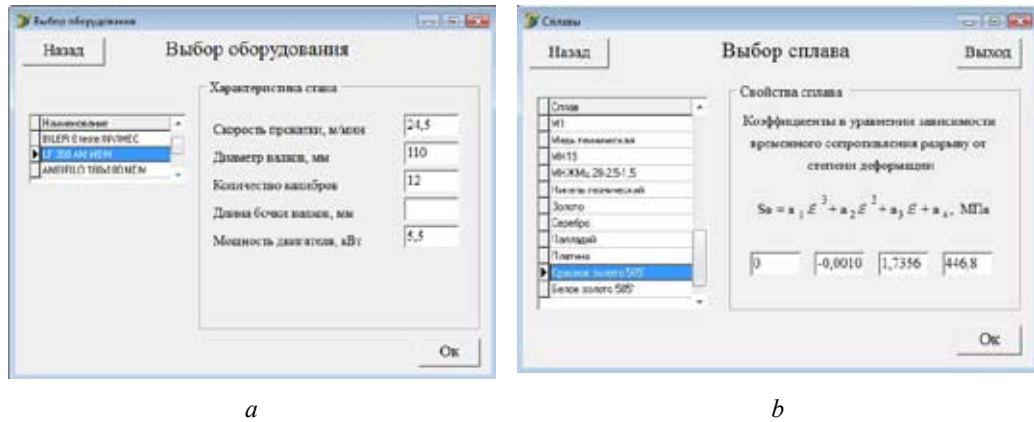


Fig. 1. Program window to calculate the parameters of bar rolling when selecting equipment (a) and alloy (b)

Table 2. Technical characteristics of section mill two-stand model

Name of the parameter	The parameter value of the mill
Engines power, kW	4,8-7,5 and 0,25
The three-phase supply voltage, V	380
The maximum torque rolling, kgm	136
Rolling speed, m/min	12,5+26
Length of barrel rolls, mm	200+180
Roll diameter, mm	130
Number of calibers	50
Overall dimensions, mm	1700×1320×1450

For obtain an accurate geometric model of the deformation zone in calibers close in shape to a rhomboid, rolled samples depicted in scale 1:1 using program AutoCAD, and then using vector graphics have led to specific form (Fig. 3). This allowed finding length of the metal contact and the contact area of the deformed metal with rolls with high accuracy (Fig. 4).

On the basis of these data was obtained empirical formula to determine the area of contact metal with rolls in calibers at cold bar rolling.

$$F_{cont} = 19,178 \cdot e^{(0,2612 \cdot x)},$$

where x – size by the caliber, mm.

Using data obtained with the help of the developed software to performed calculations to determine the power parameters for the following factory processing. Rolling initial ingot diameter of 10 mm was carried out in three stages. In the first phase rolling led to the mill Famor TL 12T in calibers to the size of a square cross-section bars 3,7×3,7 mm. Then - on mills type BILER in two mills to size accordingly 2,1×2,1 mm и 1,1×1,1 mm. The calculated power parameters of rolling of a new alloy are presented in Table 3. Change efforts rolling through the aisles in Fig. 5.

Сертовая прокатка

Назад Выход

Ввод данных

Исходные данные

Диаметр заготовки: мм

Конечная сторона раската: мм

Средняя вытяжка:

Выбор оборудования:

Уточнить коэффициенты:

Вытяжки по проходам

Введите значения вытяжек по проходам:

1: 4:

2:

3:

Начать расчет

Получить графики

Результаты расчетов

	Сторона калибра, мм	Высота калибра, мм	Ширина калибра, мм	Площадь сечения калибра, мм ²	Вытяжка	Степень деформации, %	Уширение	Степень заполнения калибра	Приведенный диаметр валков, мм
1	7,72	10,41	10,18	59,46	1,32	24,24	1,01	0,65	9,55
2	7,42	9,93	10,67	55,06	1,08	29,05	1,02	0,92	10,07
3	6,81	9,64	10,42	46,5	1,18	40,75	1,05	1	10,4
4	6,3	8,43	9,92	39,69	1,17	49,43	1,02	0,99	12,04

а

Волочение проволоки

Назад Выход

Ввод данных

Введите исходные данные

Начальный диаметр: мм

Конечный диаметр: мм

Средняя вытяжка: мм

Выбор оборудования:

Ок

Начать расчет

Получить графики

Вытяжки по проходам

1: 2: 3: 4: 5:

6: 7: 8: 9: 10:

Результаты расчетов

	Диаметр, мм	Вытяжка	Степень деформации, %	Напряжение волокон, МПа	Коэффициент запаса	Усилие волокон, кН	Диаметр тягловой шайбы, мм	Скорость проволоки, м/с	Скорость шайбы, м/с
1	1,019	1,47	32,43	437,73	1,02	356,95	80	0,06	0,33
2	0,837	1,47	54,34	438,19	1,02	241,46	89,99	0,08	0,37
3	0,698	1,43	68,29	413,68	1,08	158,3	101,99	0,12	0,42
4	0,587	1,4	77,51	395,47	1,13	107,33	116	0,18	0,48
5	0,498	1,38	83,82	383,4	1,16	74,05	130	0,25	0,54
6	0,429	1,35	88,01	359,2	1,24	51,95	146,99	0,33	0,61
7	0,369	1,35	91,12	359,25	1,24	38,48	166	0,45	0,69
8	0,319	1,34	93,37	353,23	1,26	28,24	188	0,61	0,78
9	0,278	1,31	94,94	335,07	1,33	20,44	211,99	0,8	0,88
10	0,249	1,24	95,93	294,78	1,52	14,46	239,99	1	1

б

Fig.2. Examples of calculation deformation regimes of rolling (a) and drawing (b)



Fig. 3. Contact area of the deformed samples after rolling

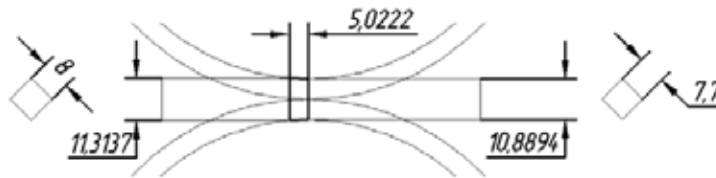


Fig. 4. Scheme to determine the length of the contact metal with rolls

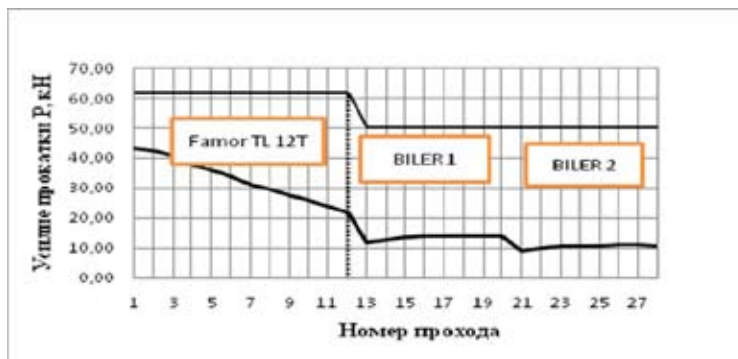


Fig. 5. Change efforts rolling through the aisles

The calculation showed that the values of effort does not exceed allowable (Fig. 5), as allowable force mill Famor TL 12T was 61.7 kN, and rolling mill type BILER – 50,3 kN.

The final stage to get the wire is drawing process on the mill type 10NFS COMEVI, which was carried out the following route: 1,1-1,00-0,90-0,80-0,70-0,60-0,50-0,45-0,35-0,30-0,25 mm. The calculation results are shown in Table 4.

To analyze the indicators of power parameters the process of drawing calculated voltage wire drawing and the safety factor. The analysis showed that for the new alloy to its mechanical properties, used in the factory route drawing is not rational. The reason is that in the first pass, the value of the safety factor below the permissible value $\gamma_r = 1,4$, which suggests the possibility of wire breakage.

Graphical representation of stress changes drawing is shown in Fig. 6.

As seen from the above presented depending, distribution voltages wire drawing unevenly through the aisles, reaching peak levels at 1, 6 and 11 aisles, it can also lead to a wire breaks of thin sections.

Table 3. Bar rolling process parameters

№ of aisles	F, mm ²	ϵ_{sum} , %	F _K , mm ²	σ_T , MPa	P, kN
rolling on the mill Famor					
1	62,41	20	150,99	286,44	43,25
2	57,76	26	139,61	304,47	42,51
3	51,84	34	125,76	326,16	41,02
4	43,56	45	107,52	354,10	38,07
5	38,44	51	96,85	369,99	35,83
6	34,81	56	89,55	380,61	34,08
7	29,16	63	78,59	396,07	31,13
8	26,01	67	72,67	404,13	29,37
9	23,04	71	67,19	411,36	27,64
10	20,25	74	62,13	417,83	25,96
11	16,81	79	55,96	425,37	23,80
12	13,69	83	50,41	431,79	21,77
rolling on the mill BILER №1					
1	12,96	5	49,11	236,29	11,60
2	11,56	16	46,61	270,74	12,62
3	10,24	25	44,24	300,83	13,31
4	9,00	34	41,99	326,98	13,73
5	7,29	47	38,82	359,68	13,96
6	6,25	54	36,85	377,65	13,92
7	5,29	61	34,97	392,97	13,74
8	4,84	65	34,07	399,72	13,62
rolling on the mill BILER №2					
1	4,00	17	32,34	276,53	11,60
2	3,24	33	30,69	323,63	12,62
3	2,56	47	29,13	360,56	13,31
4	2,25	54	28,38	375,75	13,73
5	1,96	60	27,64	389,04	13,96
6	1,69	65	26,93	400,60	13,92
7	1,44	70	26,24	410,61	13,74
8	1,21	75	25,56	419,24	13,62

To eliminate detected flaws designed new modes of drawing: using a wire drawing machine, used in factory conditions (Fig. 2), and tougher of drawing regime 1,1-0,82-0,67-0,55-0,45-0,37-0,30-0,25 mm, which provides smooth change of extracts coefficients through the aisles (Fig. 7) and lower stress values at the end of the process of drawing (Fig. 8).

Developed modes of drawing are characterized by a uniform distribution of the deformation characteristics, have high safety margins, which positively affected on the implementation of the drawing process.

Table 4. Drawing process parameters

№ of aisles	d_i , mm	F , mm ²	ϵ_{sum} , %	σ_B , MPa	P_B , N	K_B , MPa	γ_f
1	1,00	0,7850	35	506,16	317,93	405,01	1,25
2	0,90	0,6359	47	526,51	114,62	180,27	2,92
3	0,80	0,5024	58	544,43	106,36	211,70	2,57
4	0,70	0,3847	68	560,03	96,78	251,61	2,23
5	0,60	0,2826	77	573,38	86,08	304,59	1,88
6	0,50	0,1963	84	584,55	74,41	379,16	1,54
7	0,45	0,1590	87	589,34	32,57	204,92	2,88
8	0,40	0,1256	90	593,61	29,37	233,85	2,54
9	0,35	0,0962	92	597,37	26,09	271,33	2,20
10	0,30	0,0707	94	600,61	22,75	321,94	1,87
11	0,25	0,0491	96	603,35	19,34	394,23	1,53

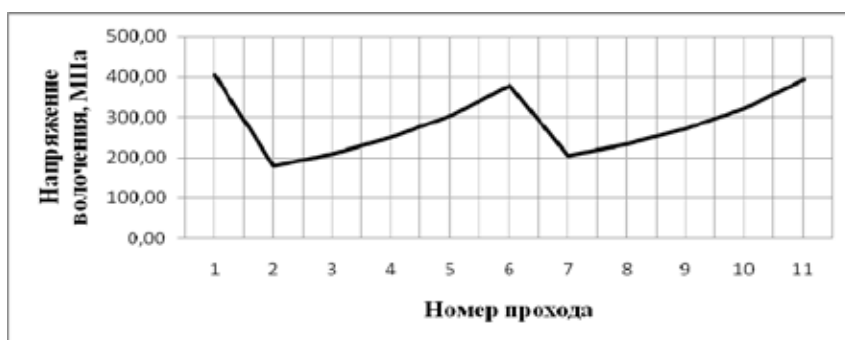


Fig. 6. Changes in the voltage wire drawing through the aisles at the factory mode

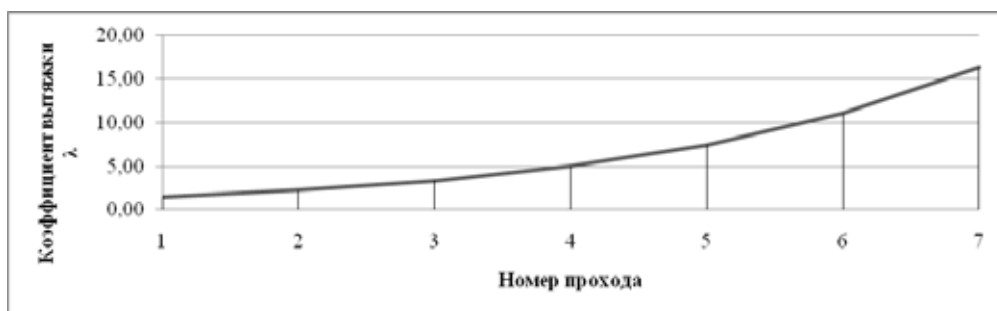


Fig. 7. The distribution coefficients of extracts through the aisles

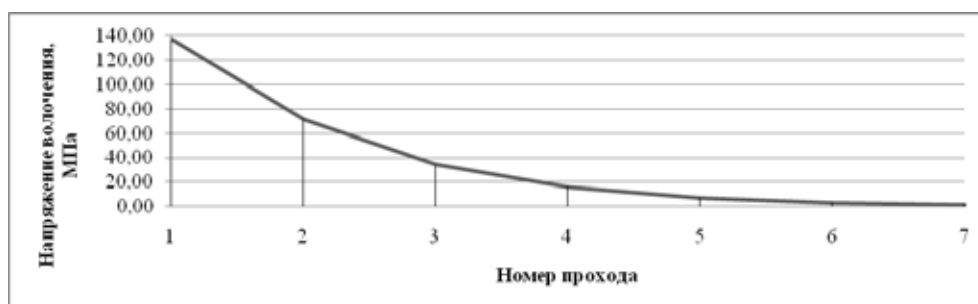


Fig. 8. Stress distribution of drawing through the aisles

On technology developed by «Krastsvetmet» JSC experimental batches of jewelry chains were manufactured, thus as a result of tests yield increased by 2-10%, depending on the diameter of the produced wire.

Thus, the results of research:

- the modeling process of bar rolling in calibers was carried out, which allowed to obtain the calculation depending to the area of contact metal with the rolls on the bar rolling mill and to calculate the power parameters of the process;
- proposed a method and created software, allows you to quickly calculate the deformation modes and power parameters of processing;
- analyzed deformation modes used for bar rolling and drawing in Krasnoyarsk Facility of Non-Ferrous Metals;
- proposed and verified regimes of rolling and drawing for new gold alloys 585 standard and obtained experimental batches of high quality products.

References

[1] *Sidelnikov S.B., Dovjhenko N.N., Biront V.S. and others.* Alloy based on gold. The patent of Russian Federation № 2391425 RF, Publ.:10.06.2010. Bulletin № 16.

[2] *Dovjhenko N.N., Sidelnikov S.B., Maltsev E.V. and others.* The analysis of deformation modes of processing of precious metals and their alloys //Non-Ferrous Metals-2010: Collected reports of the Second International Congress. Krasnoyarsk: «Verso» Ltd, 2010. P. 663-669.

[3] *Sidelnikov S.B., Istomin V.N., Maltsev E.V. and others.* Calculation of indicators stress state and kinematic characteristics of the process of drawing wire from alloys of gold 585 standard // Modeling and development processes of metal forming: Interregional collection of scientific works / edited by V.M. Salganik. Magnitogorsk: Publishing house Magnitogorsk. State Technical University named after G.I. Nosov, 2011. P. 185-193.

[4] *Smirnov V.K., Shilov V.A., Inatovich J.V.* Calibration of rolls: Textbook for high schools. 2nd extended and revised edition. M.: Thermotechnics, 2010.

**Разработка методики расчета
технологических параметров получения
деформированных полуфабрикатов
из сплавов золота 585-й пробы**

**С.Б. Сидельников,
Н.Н. Довженко, О.С. Лебедева,
С.В. Беляев, Ю.Д. Гайлис, Е.В. Феськов**
*Сибирский федеральный университет
Россия 660041, Красноярск, пр. Свободный, 79*

Разработаны алгоритмы, программное обеспечение и методика расчета деформационных режимов и энергосиловых параметров холодной сортовой прокатки и волочения прутков и проволоки из сплавов золота 585-й пробы. Получена формула для расчета контактной площади при прокатке в калибрах, близких по форме к ромбическим. Представлены результаты анализа заводских режимов и предложены новые маршруты прокатки и волочения, которые прошли промышленную апробацию с получением опытных партий ювелирных цепей.

Ключевые слова: сплавы золота, прокатка, волочение, механические свойства, режимы деформации, усилие, контактная площадь, напряжение.
