



## 20th century changes in carbon isotopes and water-use efficiency: tree-ring-based evaluation of the CLM4.5 and LPX-Bern models

Kathrin M. Keller<sup>1,2</sup>, Sebastian Lienert<sup>1,2</sup>, Anil Bozbiyik<sup>1,2</sup>, Thomas F. Stocker<sup>1,2</sup>, Olga V. Churakova (Sidorova)<sup>3,4</sup>, David C. Frank<sup>2,5,6</sup>, Stefan Klesse<sup>2,5,6</sup>, Charles D. Koven<sup>7</sup>, Markus Leuenberger<sup>1,2</sup>, William J. Riley<sup>7</sup>, Matthias Saurer<sup>5,8</sup>, Rolf Siegwolf<sup>5,8</sup>, Rosemarie B. Weigt<sup>8</sup>, and Fortunat Joos<sup>1,2</sup>

<sup>1</sup>Climate and Environmental Physics, Physics Institute, University of Bern, Bern, Switzerland

<sup>2</sup>Oeschger Centre for Climate Change Research, University of Bern, Bern, Switzerland

<sup>3</sup>Institute for Environmental Sciences, University of Geneva, Geneva, Switzerland

<sup>4</sup>Siberian Federal University, Krasnoyarsk, Russia

<sup>5</sup>Swiss Federal Research Institute WSL, Birmensdorf, Switzerland

<sup>6</sup>Laboratory of Tree Ring Research, the University of Arizona, Tucson, AZ, USA

<sup>7</sup>Lawrence Berkeley National Lab (LBNL), Berkeley, CA, USA

<sup>8</sup>Paul Scherrer Institute, Villigen, Switzerland

Correspondence to: Kathrin M. Keller (keller@climate.unibe.ch)

Received: 25 November 2016 – Discussion started: 1 December 2016

Revised: 12 April 2017 – Accepted: 24 April 2017 – Published: 24 May 2017

**Abstract.** Measurements of the stable carbon isotope ratio ( $\delta^{13}\text{C}$ ) on annual tree rings offer new opportunities to evaluate mechanisms of variations in photosynthesis and stomatal conductance under changing  $\text{CO}_2$  and climate conditions, especially in conjunction with process-based biogeochemical model simulations. The isotopic discrimination is indicative of the ratio between the  $\text{CO}_2$  partial pressure in the intercellular cavities and the atmosphere ( $c_i/c_a$ ) and of the ratio of assimilation to stomatal conductance, termed intrinsic water-use efficiency (iWUE). We performed isotope-enabled simulations over the industrial period with the land biosphere module (CLM4.5) of the Community Earth System Model and the Land Surface Processes and Exchanges (LPX-Bern) dynamic global vegetation model. Results for C3 tree species show good agreement with a global compilation of  $\delta^{13}\text{C}$  measurements on leaves, though modeled  $^{13}\text{C}$  discrimination by C3 trees is smaller in arid regions than measured. A compilation of 76 tree-ring records, mainly from Europe, boreal Asia, and western North America, suggests on average small 20th century changes in isotopic discrimination and in  $c_i/c_a$  and an increase in iWUE of about 27 % since 1900. LPX-Bern results match these century-scale reconstructions, supporting the idea that the physiology of stomata has evolved to optimize trade-offs between carbon gain by assimilation and

water loss by transpiration. In contrast, CLM4.5 simulates an increase in discrimination and in turn a change in iWUE that is almost twice as large as that revealed by the tree-ring data. Factorial simulations show that these changes are mainly in response to rising atmospheric  $\text{CO}_2$ . The results suggest that the downregulation of  $c_i/c_a$  and of photosynthesis by nitrogen limitation is possibly too strong in the standard setup of CLM4.5 or that there may be problems associated with the implementation of conductance, assimilation, and related adjustment processes on long-term environmental changes.

### 1 Introduction

Measurements of the stable isotope  $^{13}\text{C} : ^{12}\text{C}$  ratio ( $\delta^{13}\text{C}$ ) on samples from air and natural archives hold information on the carbon cycling in the Earth system. A particularly important area of isotopic research is the clarification of mechanisms controlling  $\delta^{13}\text{C}$  carbon assimilation and water transpiration by land plants (Farquhar et al., 1989; Saurer et al., 2014; Voelker et al., 2016) and their role in the global terrestrial carbon sink (Ciais et al., 2013). There are numerous other interesting applications of  $\delta^{13}\text{C}$  in the context of Earth system science. The modern decrease in atmospheric  $\delta^{13}\text{C}$  is an

unequivocal testimony to the input of isotopically light fossil and terrestrial carbon by human activities (Keeling et al., 1979; Francey et al., 1999). The  $\delta^{13}\text{C}$  data representing atmospheric air are used to quantify the global ocean and land carbon sources and sinks (Keeling et al., 1989; Joos and Bruno, 1998; Trudinger et al., 2002; Bauska et al., 2015). Furthermore,  $\delta^{13}\text{C}$  observations allow identification of the imprint of fossil-fuel carbon in atmospheric air to quantify regional-to-local-scale land carbon sources and sinks (Torn et al., 2011; Vardag et al., 2016), or to evaluate air–sea transfer velocity parameterizations (Krakauer et al., 2006). The  $\delta^{13}\text{C}$  data from the modern ocean are applied to infer the oceanic uptake of anthropogenic carbon (Heimann and Maier-Reimer, 1996; Gruber et al., 1999; Sonnerup and Quay, 2012; Becker et al., 2016), while paleoproxy  $\delta^{13}\text{C}$  data from ocean sediments and ice cores permit inference of land carbon changes between the last glacial maximum and the current warm period (Shackleton, 1977; Ciais et al., 2012; Peterson et al., 2014). Paleo- $\delta^{13}\text{C}$  data are also used to trace water mass, circulation and biological productivity changes on glacial–interglacial timescales and during past abrupt events (Menviel et al., 2012; Schmittner and Somes, 2016), to disentangle processes of past glacial–interglacial carbon-cycle changes (Menviel and Joos, 2012; Schneider et al., 2013; Eggleston et al., 2016), and of ancient climate events (Kennett and Stott, 1991; Korte and Kozur, 2010).

Box models, ocean- and land-only models, and Earth system models of intermediate complexity (Siegenthaler and Joos, 1992; Aranibar et al., 2006; Lai et al., 2006; Tschumi et al., 2011; Holden et al., 2013; Schmittner et al., 2013) have been traditionally evaluated by  $\delta^{13}\text{C}$  data and used for the interpretation of  $\delta^{13}\text{C}$  observations. Yet, despite such potential,  $^{13}\text{C}$  has only been implemented recently in comprehensive Earth system models and their subcomponents (Tagliabue and Bopp, 2008; Oleson et al., 2013; Jahn et al., 2015). Now carbon isotopes have been implemented in the ocean component of the Community Earth System Model (CESM) (Jahn et al., 2015). In this paper we present the implementation of  $\delta^{13}\text{C}$  in the CESM land module.

Isotopic discrimination of plants following the C3 photosynthesis pathway depends on  $\text{CO}_2$  assimilation and stomatal conductance (Farquhar et al., 1982; Lloyd and Farquhar, 1994), which themselves depend on the availability of nitrogen, water, and light, as well as species-specific leaf traits. Discrimination and variations thereof are thus indicative of the extent to which carbon assimilation by plants, fueling plant growth, is limited by factors such as drought and nitrogen limitation. In other words, quantification of isotopic discrimination changes over time and permits the evaluation of responses of stomatal conductance and assimilation to environmental variation and extremes. Environmental changes on the policy-relevant timescale of global warming include increasing atmospheric  $\text{CO}_2$ , climate change, and increasing nitrogen deposition. Tree-ring  $\delta^{13}\text{C}$  records capture the influence of local climate variability with measured  $\delta^{13}\text{C}$  vari-

ations used to reconstruct, for example, fluctuations in temperature (Treydte et al., 2009; Sidorova et al., 2013), precipitation (Schubert and Jahren, 2011), or cloud cover (Gagen et al., 2011; Young et al., 2012).

The intrinsic water-use efficiency (iWUE), defined as the ratio between assimilation and stomatal conductance, is closely related to  $^{13}\text{C}$  discrimination. Rising atmospheric  $\text{CO}_2$  concentrations can have a fertilizing effect on plants, which in turn potentially increases iWUE (Keenan et al., 2013; Saurer et al., 2014) – at least as long as plant growth is not limited by other factors such as nitrogen or phosphorus supply (Reich et al., 2014; Yang et al., 2016) or water stress (Walker et al., 2015).

There is a rich body of literature on changes in  $^{13}\text{C}$  isotopic discrimination and iWUE and on observational evidence from  $\delta^{13}\text{C}$  tree-ring records (Tans et al., 1979; McCarroll and Loader, 2004; Fichtler et al., 2010; Leonardi et al., 2012; Churakova, Sidorova, S, Lévesque et al., 2014; Liu et al., 2014b; Saurer et al., 2014; Hartl-Meier et al., 2015; Voelker et al., 2016), free-air  $\text{CO}_2$  enrichment (FACE)-type experiments (Battipaglia et al., 2013; Klein et al., 2016),  $\delta^{13}\text{C}$  site measurements (Pataki et al., 2003; Bowling et al., 2014), and  $\delta^{13}\text{C}$  paleodata (Voelker et al., 2016). These data generally suggest small to moderate decadal-to-century-scale changes in discrimination that correspond to a 20th century increase in iWUE on the order of 20% and physiological control towards a constant ratio of the partial pressure of  $\text{CO}_2$  within the leaf's substomatal cavities to the  $\text{CO}_2$  pressure outside the leaf ( $c_i/c_a$ ; Saurer et al., 2004; Leonardi et al., 2012; Frank et al., 2015) and, more generally, a pattern of stomatal optimization towards minimizing water loss per unit carbon assimilated (Voelker et al., 2016).

The  $\delta^{13}\text{C}$  data are used to evaluate global and local models of plant growth, carbon cycling, and land–atmosphere isotopic fluxes for atmospheric carbon balancing (Scholze et al., 2003, 2008; Suits et al., 2005; Danis et al., 2012; van der Velde et al., 2014). The  $\delta^{13}\text{C}$  data from leaf material (Cornwell et al., 2016) are used by Prentice et al. (2014) and Wang et al. (2016) to develop the representation of assimilation in land biosphere models following an optimization principle to balance carbon gain by assimilation and water loss.

The goal of this study is to present the implementation of  $\delta^{13}\text{C}$  in the land component, Community Land Model version 4.5 (CLM4.5), of CESM and Land Surface Processes and Exchanges (LPX-Bern) and to discuss the model performance for  $\delta^{13}\text{C}$  on the global scale. This is a step towards fully coupled isotope-enabled CESM applications and complements recent advances in simulating marine carbon isotopes. We compare the CLM4.5 and LPX-Bern results to a dataset of  $\delta^{13}\text{C}$  measurements on modern leaf material (Cornwell et al., 2016), a comprehensive compilation of century-scale  $\delta^{13}\text{C}$  tree-ring records, and results from the isotope-enabled LPX-Bern dynamic global vegetation model. We discuss spatial and century-scale trends in isotopic discrimination and iWUE of the two models in light of

observational evidence, and the models' contrasting implementations of stomatal conductance and the balance between carbon assimilation and water loss.

## 2 Methods

### 2.1 CLM4.5

We use the CLM4.5 (Oleson et al., 2013), the land component of the Community Earth System Model version 1.2.0 (CESM1.2; Hurrell et al., 2013). The implementation of  $^{13}\text{C}$  is outlined below (Sect. 2.1.1). A comprehensive description of the implementation of carbon isotopes in CLM4.5 is given in the technical description of Oleson et al. (2013), with further details elsewhere for  $^{13}\text{C}$  (Raczka et al., 2016; Duarte et al., 2016) and  $^{14}\text{C}$  (Koven et al., 2013). In addition to the land, carbon isotopes are also implemented in the ocean model of CESM1.2 (Jahn et al., 2015).

CLM4.5 features fully prognostic terrestrial carbon and nitrogen cycling which comprises all vegetation, litter, and soil organic matter pools (Oleson et al., 2013). Each grid cell is composed of multiple, independently represented land-use classes. Each class has its own set of plant functional types (PFTs), snow and soil columns.

Vegetation is comprised of 15 different PFTs, which are classified into three different phenological groups: evergreen, seasonal deciduous, and stress deciduous. A total of 14 of these PFTs follow the C3 photosynthetic pathway (11 tree, 2 grasses and crops) and 1 follows the C4 path (warm grasses). Altogether, 20 carbon and 19 nitrogen pools per PFT represent carbon (C) and nitrogen (N) in vegetation. C and N are tracked for leaf, live stem, dead stem, live coarse root, dead coarse root, and fine root pools and corresponding storage pools representing, respectively, short-term and long-term storage of nonstructural carbohydrates and labile nitrogen.

Decomposition of fresh litter material (including C and N) into progressively more recalcitrant forms of soil organic matter is represented as a cascade of transformations between decomposing coarse woody debris, litter, and soil organic matter pools. Depending on the C:N ratios of involved pools and the amount of carbon lost by respiration, each transformation can generate either a source or a sink of new mineral nitrogen.

Steps that result in an uptake of mineral nitrogen (e.g., immobilization fluxes) are subject to rate limitation, depending on the availability of mineral nitrogen and the sum of nitrogen demands from immobilization, photosynthesis, nitrification, and denitrification. If mineral N is less than the sum of these demands, fluxes are downregulated in order to match N supply. We note that the "Relative Demand" downregulation in CLM4.5 has recently been shown to be inaccurate in several tropical (Zhu et al., 2016b), tundra (Zhu et al., 2016a), and grassland (Zhu et al., 2017) systems. In addition to the cycling of nitrogen within the plant–litter–soil organic mat-

ter system, CLM represents external sources, including atmospheric deposition and biological nitrogen fixation. CLM also represents other N sinks not included in this budgeting, including leaching and losses due to fire.

Photosynthesis in C3 and C4 plants is based on Farquhar et al. (1980) and Collatz et al. (1992), respectively. The maximum rate of carboxylation at 25 °C varies with an assumed static foliage nitrogen concentration and specific leaf area and is a PFT-specific parameter. It is assumed that leaf nitrogen and sunlight decrease exponentially with cumulative leaf area index from the canopy top to canopy bottom. Accordingly, the carboxylation rate and other photosynthesis parameters decrease exponentially within the canopy. Leaf-level photosynthesis is scaled to the canopy level by integration over the total leaf area. This is done separately for sunlit and shaded leaves and by considering the exponential scaling.

The allocation of carbon and nitrogen is determined in the following steps: first, gross primary productivity (GPP) is calculated under the assumption of unlimited nitrogen supply. Then, the maintenance respiration demand is subtracted from GPP. Following this, the actual nitrogen supply is compared against the nitrogen demand and GPP, if necessary, is downregulated. Finally, the available carbon is either utilized for plant growth and growth respiration or stored for growth in the subsequent years. Ghimire et al. (2016) recently presented an improved scheme which avoids this instantaneous downregulation by N limitation.

#### 2.1.1 Carbon isotope discrimination during photosynthesis in CLM4.5

Isotopic ratios are usually reported as deviation from a standard material:

$$\delta^{13}\text{C} = \left( \frac{R_{\text{sample}}}{R_{\text{std}}} - 1 \right) \cdot 1000, \quad (1)$$

where  $R_{\text{sample}}$  and  $R_{\text{std}}$  denote the  $^{13}\text{C}/^{12}\text{C}$  molar ratios of the sample and the standard material, respectively. Isotopic fractionation factors,  $\alpha$ , are here defined as the ratio of the carbon isotope ratios in reactant to product (Farquhar et al., 1989). (We note that  $\alpha$  is also defined by the ratio of product ratio to reactant ratio in the literature.) The fractionation factor for photosynthetic assimilation of  $\text{CO}_2$  from canopy air is then as follows:

$$\alpha_{\text{psn}} = R_{\text{air}}/R_{\text{GPP}}, \quad (2)$$

where  $R_{\text{air}}$  and  $R_{\text{GPP}}$  denote the  $^{13}\text{C}/^{12}\text{C}$  molar ratios in the canopy air and in the resulting GPP flux incorporated in the plant material. A  $\alpha$  value larger than unity results in a discrimination against the heavier isotope and therefore to a depletion of  $^{13}\text{C}$  in GPP and plant material compared to air. Discrimination is also expressed by  $\Delta_i$ , the deviation of  $\alpha$  from unity and here multiplied by 1000 for conformity with the  $\delta^{13}\text{C}$  notation ( $\Delta_i = (\alpha - 1) \cdot 1000$ ).

Photosynthesis in CLM4.5 and, embedded in this process, photosynthetic discrimination, are implemented in two steps following Farquhar et al. (1989). In step 1, given that no enzymatic fractionation is of relevance, the diffusion of CO<sub>2</sub> across the leaf boundary layer and into the stomata is associated with a kinetic isotope effect of  $a = 4.4$ . During step 2, enzymatic fixation, the effect on C3 plants is  $b = 27$ . These two steps are additive and result in the leaf-level fractionation factor; however, note that in the case of C4 plants only step 1 is of relevance. The CAM photosynthetic pathway is not considered in the model. The leaf-level fractionation factors ( $\alpha_{\text{psn}}$ ) of C3 and C4 plants are defined as follows:

C4 plants:

$$\alpha_{\text{psn}} = 1 + \frac{a}{1000}; \quad (3)$$

C3 plants:

$$\alpha_{\text{psn}} = 1 + \frac{a + (b - a) \frac{c_i^*}{c_a}}{1000}, \quad (4)$$

where  $c_i^*$  and  $c_a$  represent the intercellular and atmospheric concentration of CO<sub>2</sub> (mol mol<sup>-1</sup>), respectively. This results in an isotopic discrimination between assimilated plant material ( $\delta^{13}\text{C}_{\text{plant}}$ ) and atmospheric CO<sub>2</sub> ( $\delta^{13}\text{C}_a$ ), expressed in per mill units (Farquhar et al., 1989) for C3 plants as follows:

$$\Delta_i = (\delta^{13}\text{C}_a - \delta^{13}\text{C}_{\text{plant}})/(1 + \delta^{13}\text{C}_{\text{plant}}/1000). \quad (5)$$

Isotopic discrimination can be approximated by  $\Delta_i = a + (b - a)c_i^*/c_a$  (Farquhar et al., 1989). Fractionation factors for all other land biosphere fluxes are set to unity and, thus, no further discrimination occurs in the land model.

The kinetic isotope effect during CO<sub>2</sub> fixation is constrained by  $c_i^*$  which, in turn, depends on the net carbon assimilation during photosynthesis ( $a_n$ ;  $\mu\text{mol m}^{-2} \text{s}^{-1}$ ). The asterisk in  $c_i^*$  denotes the consideration of nitrogen downregulation in the photosynthesis calculation (for details, see Oleson et al., 2013), which is implemented as follows:

$$c_i^* = c_a - a_n(1 - f_{\text{dreg}}) \frac{(1.4g_s) + (1.6g_b)}{g_b g_s}, \quad (6)$$

where  $f_{\text{dreg}}$  is the downscaling factor due to nitrogen limitation,  $g_b$  is leaf boundary-layer conductance, and  $g_s$  is leaf stomatal conductance for water ( $\mu\text{mol m}^{-2} \text{s}^{-1}$ ).

In CLM4.5, assimilation is calculated before nitrogen limitation is considered. Thus,  $c_i$  in the photosynthesis module is different from  $c_i^*$ . The value of  $c_i$  follows from Eq. (6) with  $f_{\text{dreg}} = 0$ . In other words, plants photosynthesize carbon at a potential, nitrogen-unlimited rate. Photosynthesis  $a_n$  and, in turn, stomatal conductance  $g_s$  are not directly affected by nitrogen limitation. The flow of water and carbon through the stomata is simulated to occur by molecular diffusion, and a ratio of 1.6 applies between the diffusivity of water and CO<sub>2</sub>, while a diffusivity ratio of 1.4 is assumed for the leaf boundary layer (Oleson et al., 2013). Stomatal conductance,  $g_s$ , is

itself linearly related to the product of leaf net photosynthesis ( $a_n$ ), the relative humidity (RH) at the leaf surface, and the inverse of the CO<sub>2</sub> concentration at the leaf surface,  $c_s$  (Ball et al., 1987; Collatz et al., 1991; Oleson et al., 2013):

$$g_s = m \cdot \frac{\text{RH}}{c_s} \cdot a_n + b, \quad (7)$$

where  $b$  is a minimal conductance as a function of soil water availability, and  $m$  a constant parameter, defining the slope between  $a_n$  and  $g_s$ . For C<sub>3</sub> plants  $m$  is set to 9, and for C<sub>4</sub> plants it is set to 4 (Oleson et al., 2013). Both assimilation and stomatal conductance are downregulated by a drought stress factor which depends on soil moisture availability and can vary between 0 and 1. Nitrogen limitation and water stress can therefore result in a downregulation of  $c_i^*/c_a$  and thus to a reduction in the carbon isotope discrimination of C3 plants in CLM4.5.

Equation (6) represents the constraint that CO<sub>2</sub> consumption by photosynthesis ( $A = a_n \cdot (1 - f_{\text{dreg}})$ ) equals the transport of CO<sub>2</sub> through the leaf boundary layer and the stomata into the stomatal cavity. The latter is the product of the concentration gradient between the atmosphere and the stomatal cavity ( $c_a - c_i^*$ ) and an overall conductance for CO<sub>2</sub> ( $g_{\text{CO}_2} = (g_b g_s)/(1.4g_s + 1.6g_b)$  ( $\mu\text{mol m}^{-2} \text{s}^{-1}$ ). Thus, we can also write the following:

$$A = g_{\text{CO}_2} \cdot (c_a - c_i^*) = g_{\text{CO}_2} \cdot c_a \cdot (1 - c_i^*/c_a). \quad (8)$$

In the following sections, for simplicity and for consistency with the isotopic literature and the LPX description, we will omit the superscript of  $c_i^*$  and denote  $c_i^*$  also by  $c_i$ .

## 2.2 LPX-Bern 1.3

The LPX-Bern 1.3 model (Spahni et al., 2013; Stocker et al., 2013; Saurer et al., 2014; Churakova, Sidorova; Ruosch et al., 2016; Keel et al., 2016) is based on the Lund–Potsdam–Jena (LPJ) dynamic global vegetation model (Sitch et al., 2003; see also Joos et al., 2001; Gerber et al., 2004; Strassmann et al., 2008). LPX combines process-based, large-scale representations of terrestrial vegetation dynamics, the dynamics of terrestrial carbon and nitrogen stocks and fluxes, and land–atmosphere exchanges of water, carbon dioxide, methane, nitrous oxide, and carbon and water isotopes in a modular framework.

Following the assimilation of multiple experimental constraints, such as net primary productivity (NPP) (Olson et al., 2013) and the seasonal fraction of absorbed photosynthetically active radiation (Gobron et al., 2006), several key model parameters were updated. Note that no  $\delta^{13}\text{C}$  observational data, e.g., from tree-rings or atmospheric samples, were used as a constraint in the assimilation. A list of the updated parameters and their values can be found in Table 1.

Each grid cell in LPX is subdivided into different land-use classes (areas with natural mineral soils, peatland, other wet-



**Table 1.** Parameter values of LPX-Bern that were modified from the previous model version (LPX v1.2) and as used in this study (LPX v1.3). The new values were determined by maximizing agreement with a set of observational data.

Parameter		LPX v1.2	LPX v1.3
$\alpha_a$	Fraction of PAR assimilated at ecosystem level relative to leaf level	0.5	0.620
$\alpha_{C3}$	Intrinsic quantum efficiency of CO <sub>2</sub> uptake in C3 plants	0.07	0.0857
$\theta$	Co-limitation shape parameter	0.7	0.694
$g_m$	Canopy conductance scaling parameter for water-demand calculation	3.24	2.95
$\alpha_m$	Priestley–Taylor coefficient in water-demand calculation	1.4	1.764
$\tau_{\text{sapwood}}$	Sapwood to heartwood turnover (years)	20	11.1
$k_{\text{la:sa}}$	Allometric scaling parameter: leaf area to sapwood area	1.0	1.3
$k_{\text{mort}}$	Coefficient of growth efficiency in mortality equation	0.01	0.0118
$E_{0,\text{hr}}$	Temperature sensitivity of heterotrophic respiration (K)	308.56	222.0
$f_{\text{atm}}$	Fraction of litter entering atmosphere directly	0.6	0.66
$f_{\text{slow}}$	Fraction of litter entering slow soil pool	0.015	0.0106
$k_{\text{soil,tune}}$	Tuning factor for soil decay	0.7	0.840
$\text{nitr}_{\text{max}}$	Maximum nitrification rate	0.1	0.0923
$f_{\text{imob,soil}}$	Nitrogen immobilization in soil	0.0	0.249
$\text{OX}_{\text{past}}$	Fraction of direct oxidation of leaf turnover on pastures	0.4	0.298
$\text{OX}_{\text{crop}}$	Fraction of direct oxidation of leaf turnover on cropland	0.9	0.9094

lands, cropland, pasture, urban). LPX simulates the distribution of PFTs based on bioclimatic limits for plant growth and regeneration, and plant-specific parameters that govern plant competition for light, water (Sitch et al., 2003), and nitrogen (Xu-Ri and Prentice, 2008; Xu-Ri et al., 2012). Here, seven generic tree PFTs all follow the C3 photosynthetic pathway together with C3 grasses, and C4 grasses are considered on natural nonpeatland areas. The two PFTs on cropland and pastures have the same properties as the C3 and C4 grasses on natural land and grow depending on climatic conditions. On peatland, two PFTs (C3 graminoids and Sphagnum moss) grow. Seven carbon and nitrogen pools per PFT represent leaves, sapwood, heartwood, fine roots, aboveground leaf litter, aboveground woody litter, and belowground litter. Separate soil organic carbon and nitrogen pools receive input from litter of all PFTs. N input by biological N fixation is implied by maintaining prescribed C to N ratios in litter and soil pools. Inorganic soil nitrogen pools receive input from litter and soil decomposition and through atmospheric N deposition and are subject to plant uptake, leakage, and gaseous losses (Xu-Ri and Prentice, 2008).

Photosynthesis and stomatal control in LPX is described by Haxeltine and Prentice (1996b), as summarized elsewhere (Keel et al., 2016; Sitch et al., 2003). The equations for water supply from soil and transpiration, assimilation, and canopy conductance are solved simultaneously by varying the ratio  $c_i/c_a$ , also termed  $\lambda$ , to yield self-consistent values for these properties.

Total daytime net photosynthesis,  $A_{\text{dt}}$ , is modeled following Collatz et al. (1991, 1992), which is a Farquhar model (Farquhar et al., 1980) generalized for global modeling purposes (for details, see Haxeltine and Prentice, 1996a).  $A_{\text{dt}}$  is a function of daily radiation, temperature, day length, and

atmospheric CO<sub>2</sub> partial pressure and  $\lambda$ .  $A_{\text{dt}}$  is computed from a formulation which gives a gradual transition between light-limited and Rubisco-limited rate of photosynthesis. The amount of photosynthetically active radiation absorbed by the entire canopy increases with the modeled leaf area index following Beer's law and is used to compute the light-limited photosynthesis rate. The N content and Rubisco activity of leaves are assumed to vary seasonally and with canopy position in such a way as to maximize  $A_{\text{dt}}$ .

Canopy conductance,  $g_c$ , is linked to  $A_{\text{dt}}$  through

$$g_c = g_{\text{min}} + \frac{1.6A_{\text{dt}}}{c_a(1 - \lambda)}, \quad (9)$$

where  $g_{\text{min}}$  is a PFT-specific minimum canopy conductance.

Daily transpiration of water is calculated for each PFT as the minimum of a plant- and soil-limited supply function ( $E_{\text{supply}}$ ) and the demand for transpiration ( $E_{\text{demand}}$ ).  $E_{\text{supply}}$  is the product of root-weighted soil moisture availability and a maximum water supply rate that is equal for all PFTs.  $E_{\text{demand}}$  is calculated following the empirical relation between evaporation efficiency and surface conductance of Monteith (1995):

$$E_{\text{demand}} = E_{\text{eq}}\alpha_m \left[ 1 - \exp\left(\frac{-g_c\phi}{g_m}\right) \right], \quad (10)$$

where  $E_{\text{eq}}$  is the equilibrium evaporation rate, dependent on temperature and radiation,  $g_m$  and  $\alpha_m$  are empirical parameters,  $g_c$  is the canopy conductance, and  $\phi$  is the fraction of present foliage area to ground area (i.e., projected leaf area). Equation (10) is solved for  $E_{\text{demand}}$  using the non-water-stressed potential canopy conductance which is calculated using Eq. (9) and a fixed ratio  $\lambda$  to compute  $A_{\text{dt}}$ . The value of  $\lambda$  is set equal to 0.8 following Sitch et al. (2003) to approximate non-water-stressed conditions and as a starting value

for the iterative computation of carbon assimilation and transpiration under water shortage. In the case of water-stressed conditions when  $E_{\text{demand}}$  exceeds  $E_{\text{supply}}$ , canopy conductance and photosynthesis are downregulated;  $E_{\text{demand}}$  is set to  $E_{\text{supply}}$  and Eq. (10) is solved for  $g_c$ . Knowing  $g_c$  and  $c_a$ ,  $\lambda$  is varied in the photosynthesis module until the following relationship is satisfied:

$$A_{\text{dt}}(\lambda) = \frac{g_c - g_{\text{min}}}{1.6} c_a (1 - \lambda). \quad (11)$$

NPP is downregulated on the daily model time step if N demand exceeds N availability from the inorganic soil nitrogen pools. Daily NPP is integrated over a year and allocated annually to vegetation. Thus, in contrast to CESM, there is no immediate feedback of nitrogen limitation on isotopic discrimination on a daily timescale, but there is a long-term feedback by annual changes in vegetation structure and, in turn, photosynthesis and carbon assimilation.

### 2.2.1 Carbon isotope discrimination during photosynthesis in LPX

The isotopic discrimination during assimilation is calculated on a daily time step following Farquhar et al. (1989). Thus, the same discrimination formulations as in CESM (Eqs. 3 and 4) are used in LPX. We recall, however, that the intercellular  $\text{CO}_2$  concentration is, unlike in CLM4.5, not downregulated by nitrogen limitation in LPX. For Sphagnum mosses, discrimination during assimilation is fixed to  $-30\%$ . As in CESM, no further discrimination is assumed in LPX. In earlier LPX applications,  $\delta^{13}\text{C}$  was implemented following Scholze et al. (2003) and discrimination modeled following Lloyd and Farquhar (1994). Here, we adjusted the discrimination formulations and used instead the simpler formulations of Farquhar et al. (1989) for consistency with CLM4.5 and the computation of  $i\text{WUE}$  as described below. We note that our conclusions do not depend on this choice. LPX yields similar 20th century changes in discrimination and  $i\text{WUE}$  for both formulations. However, simulated  $\delta^{13}\text{C}$  of carbon assimilated by C3 trees is generally less negative (by about  $2\%$ ) when applying the Lloyd and Farquhar (1994) formulation, and agreement with leaf  $\delta^{13}\text{C}$  is less favorable.

### 2.3 Spin-up and transient simulations and model forcings

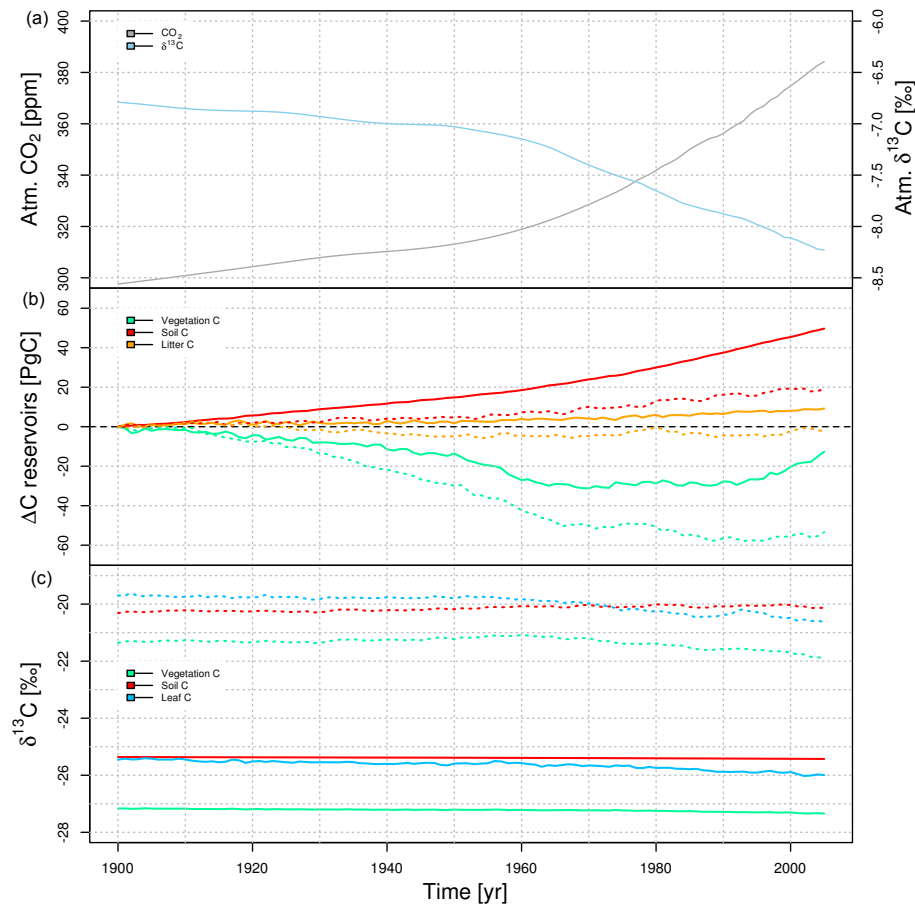
*CLM*: Starting with empty pools, the CLM model is brought into equilibrium with the following steps: (1) accelerated decomposition of soil organic matter with perpetual 1850 Common Era (CE) forcing (1000 model years), (2) normal decomposition with perpetual 1850 CE forcing (500 model years), (3) transition to 1900 CE conditions (100 model years), and (4) transient simulation over the 20th century (1900–2005). During steps (1) and (2), with both default model options, atmospheric  $\delta^{13}\text{C}$  is held on a constant value

of  $-6\%$ . The first step, based on the accelerated decomposition technique by Thornton and Rosenbloom (2005), accelerates the equilibration of the soil carbon pools. During step (3) the model is adjusted to 1900 CE conditions by prescribing transient atmospheric  $p\text{CO}_2$  and  $\delta^{13}\text{C}$  (years 1800–1900) together with CRU NCEP climate forcing data (repeated years 1901–1920; Viovy, 2011). Step (4), the 20th century simulation, is run with both transient atmospheric  $p\text{CO}_2$  and  $\delta^{13}\text{C}$  and climatic forcing data (years 1901–2005; Viovy, 2011). In both steps (3) and (4), atmospheric  $\text{CO}_2$  is prescribed following Law Dome data (Etheridge et al., 1996; MacFarling Meure et al., 2006) and atmospheric samples; prescribed atmospheric  $\delta^{13}\text{C}$  is a combination of data from Rubino et al. (2013) and, from 1993 on, White et al. (2015) (Fig. 1). Land-use area and change is prescribed following Hurtt et al. (2006).

*LPX*: The LPX model is forced with CRU TS3.23 climate data (Harris et al., 2014), and the same atmospheric  $\text{CO}_2$  and  $\delta^{13}\text{C}$  data is prescribed as in CLM4.5. Land-use maps are prescribed following Hurtt et al. (2006). After the spin-up procedure, the model is adjusted to 1900 CE conditions by applying transient atmospheric  $p\text{CO}_2$  and  $\delta^{13}\text{C}$  (years 1765–1900) together with recycled climate data (years 1901–1930). Then, the 20th century is simulated with transient atmospheric  $\text{CO}_2$  and  $\delta^{13}\text{C}$  and climatic forcing data (years 1901–2007).

*Factorial runs* were performed in addition to the standard simulation. Each setup is the same as for the 20th century simulations, although with one driving factor held constant: (i) *cCLIM*, “constant climate” (repeated years 1901–1920 for CLM4.5 and 1901–1930 for LPX); (ii) *cCO2*, constant atmospheric  $\text{CO}_2$  concentrations, only done with LPX; (iii) *cN-DEP*, constant atmospheric nitrogen deposition, only done with LPX; and (iv) *cLU*, constant land use, only done with LPX. The difference between the factorial simulation and standard simulation is attributed to the driving factor that was held constant in the factorial run. An interaction term is computed from the difference between the change simulated in the standard simulations and the sum of all attributed changes.

The two models are forced with two slightly different climate datasets as CLM4.5 is run on a subhourly time step, while a daily time step is used in LPX. CRU NCEP, used to force CLM4.5, is a combination of the CRU TS3.2 monthly climatology (resolution of  $0.5^\circ \times 0.5^\circ$ ) and the NCEP reanalysis product with a time step of 6 h ( $2.5^\circ \times 2.5^\circ$ ). The results of the factorial runs, presented later, suggest a generally small influence of this difference in forcings on simulated discrimination and  $i\text{WUE}$ . We further investigated the potential impact of using two different climate data products. The CRU NCEP data are interpolated on the  $1^\circ \times 1^\circ$  LPX grid and integrated to monthly values for use in LPX. LPX is run with the modified CRU NCEP and, as usual, with CRU-TS3.22 in the standard model setup where climate is changing transiently and the factorial setup with *cCLIM*. Differ-



**Figure 1.** (a) Prescribed evolution of atmospheric CO<sub>2</sub> and its  $\delta^{13}\text{C}$  signature, (b) simulated changes in the global inventory of carbon stored in vegetation (green), litter (orange), soils (red), (c) Evolution of the global average (mass-weighted)  $\delta^{13}\text{C}$  signature of carbon in leaves, vegetation, and soils (CLM4.5: solid, LPX: dotted).

ence in simulated changes in discrimination and *i*WUE are small for both cases. In conclusion, the large model differences, presented in the result section, are not caused by differences in climate input data.

## 2.4 Observations

Two different observational datasets are used to evaluate the model simulations. The first dataset is a compilation of  $\delta^{13}\text{C}$  time series measured on tree rings (for an overview, see Table A1). The time series cover at least the years 1900–1985 (and 2005 if possible) and comprise a wide range of different tree species and locations. Since absolute values are highly variable, depending on factors such as, for example, species, tree age, or location (McCarroll and Loader, 2004), we refrain from a direct comparison of absolute values and focus on the changes over the course of the century.

The second dataset is a compilation of  $\delta^{13}\text{C}$  measurements on leaves (Cornwell et al., 2016). The dataset is comprised of data from C3, C4, and CAM plants; however, to ensure

comparability between models and observations, only data of C3 plants are used.

The observational  $\delta^{13}\text{C}$  data are compared with 10-year averages of available model output to remove interannual variability from the model data. For CESM, data are compared to the simulated grid-cell average of the  $\delta^{13}\text{C}$  signature of the “live stem” pool. This pool has a very fast turnover time (0.7 per year; Oleson et al., 2013) and no post photosynthetic fractionation occurs in the model during the allocation of assimilated carbon. Modeled  $\delta^{13}\text{C}$  in the live stem pool thus represents on average the  $\delta^{13}\text{C}$  signature of the leaves of C3 trees. For LPX the  $\delta^{13}\text{C}$  signature of daily GPP,  $\text{GPP}_{(t,\text{PFT})}$ , is averaged for all tree PFTs within a grid cell and the land-use class “mineral soil”:

$$\delta^{13}\text{C}_{\text{av}} = \frac{\sum_t \sum_{\text{PFT}} \text{GPP}_{(t,\text{PFT})} \times \delta^{13}\text{C}_{(t,\text{PFT})}}{\sum_t \sum_{\text{PFT}} \text{GPP}_{(t,\text{PFT})}}. \quad (12)$$

$t$  is time and the sum is over 10 years. PFT is the index for PFTs and the sum is over all tree PFTs (without including grasses).

The evolution of  $\delta^{13}\text{C}$  in (C3) trees is a consequence of both the changes in atmospheric  $\delta^{13}\text{C}$  as well as changes in fractionation, related to changes in  $c_i/c_a$  (Eq. 4) and thus to a combination of physiological adjustments of trees and ecosystems to  $\text{CO}_2$ , climate, and other environmental changes. The atmospheric  $\delta^{13}\text{C}$  record shows a century-scale decrease in  $\delta^{13}\text{C}$  caused by the input of isotopically depleted  $\text{CO}_2$  from deforestation and fossil-fuel burning. This century-scale decrease, known as the Suess effect (e.g., Tans et al., 1979), is a precisely known external forcing. To account for this effect, we focus on the isotopic discrimination  $\Delta_i$  between assimilated plant material and atmospheric  $\text{CO}_2$  (Eq. 5).

Changes in discrimination of C3 plants are related to the ratio of photosynthesis to the conductivity of carbon through the stomata, two relevant tree physiological parameters regulating carbon and water fluxes. The ratio of net day-time photosynthesis to stomatal conductance for water vapor ( $A/g_{\text{H}_2\text{O}}$ ) is also known as iWUE and discussed in the literature (e.g., Scheidegger et al., 2000; Saurer et al., 2004, 2014). Using Eqs. (5) and (6) for CLM4.5, Eq. (11) for LPX, the definition of iWUE, and a ratio of 1.6 between the conductance of water and  $\text{CO}_2$ , we obtain the following:

$$\text{iWUE} = \frac{A(t)}{g_{\text{H}_2\text{O}}(t)} = c_a(t) \frac{b - \left[ \frac{\delta^{13}c_a(t) - \delta^{13}C_{\text{plant}}(t)}{1 + \frac{\delta^{13}C_{\text{plant}}(t)}{1000}} \right]}{1.6(b - a)}. \quad (13)$$

In the following, the symbol  $\Delta$  is used to denote a temporal change (not to be confused with the symbol for discrimination  $\Delta_i$ ). For example,  $\Delta\text{iWUE}$  is the difference between iWUE at time  $t_2$  and time  $t_1$ . We approximate  $\Delta\text{iWUE}$  to better understand how  $\Delta\text{iWUE}$  depends on discrimination, changes in discrimination, and atmospheric  $\text{CO}_2$ . The  $\text{CO}_2$  concentration  $c_a(t_2)$  is expressed as the sum of  $c_a(t_1)$  and the change in  $\text{CO}_2$  is expressed as  $\Delta c_a$ . In analogy, we write  $d(t_2) = d(t_1) + \Delta d$  for the difference between the atmospheric and plant  $\delta^{13}\text{C}$  ( $d = \delta^{13}c_a - \delta^{13}C_{\text{plant}}$ ). The term  $1 + \frac{\delta^{13}C_{\text{plant}}}{1000}$  is denoted as  $k$ . Variations in  $k$  are of order 1‰ and have a small influence on  $\Delta\text{iWUE}$ . Then, the following applies for the difference in iWUE ( $\Delta\text{iWUE}$ ):

$$\begin{aligned} \Delta\text{iWUE} &\cong + \frac{\Delta c_a \cdot b}{q} - \frac{c_a(t_2)}{q} \cdot \frac{\Delta d}{k(t_2)} - \frac{\Delta c_a}{q} \cdot \frac{d(t_1)}{k(t_2)} \\ &\cong 0.7467 \cdot \Delta c_a - \frac{1}{36.16} \cdot [c_a(t_2) \cdot \Delta\Delta_i \\ &\quad + \Delta c_a \cdot \Delta_i(t_1)] \end{aligned}, \quad (14)$$

where  $q$  denotes the term  $1.6(b - a)$  and is, with  $b = 27$  and  $a = 4.4$ , equal to 36.16. The approximation given in Eq. (14) holds well within 0.1 %.

Equation (14) shows that  $\Delta\text{iWUE}$  is linearly related to the isotopic discrimination at time  $t_1$ ,  $\Delta_i(t_1)$  and the change in discrimination between  $t_1$  and  $t_2$ ,  $\Delta\Delta_i$ . In other words, the

change in iWUE depends both on the change in discrimination and on the initial magnitude of the discrimination. The sensitivity in  $\Delta\text{iWUE}$  is about 7 times larger for a unit change in  $\Delta\Delta_i$  compared to a unit change in  $\Delta_i(t_1)$  when assuming a change in  $\text{CO}_2$  from 300 to 350 ppm as reconstructed for the period 1900 to 1980. Under increasing  $\text{CO}_2$ , discrimination and thus iWUE may change. The larger the decrease in discrimination, the larger the increase in iWUE, and vice versa.

The relative change in iWUE may be expressed, again very accurately, as follows:

$$\frac{\Delta\text{iWUE}}{\text{iWUE}(t_1)} \cong \frac{\Delta c_a}{c_a(t_1)} - \frac{c_a(t_2)}{c_a(t_1)} \times \frac{\Delta\Delta_i}{(b - \Delta_i(t_1))}. \quad (15)$$

The relative change in iWUE scales in proportion to the relative change in atmospheric  $\text{CO}_2$  in the absence of a change in discrimination. It also scales with changes in discrimination. For typical values, a unit change in discrimination changes the relative change in iWUE by 50 to 100 %. Further, the relative change in iWUE depends on the difference between  $b (= 27)$  and the isotopic discrimination  $\Delta_i(t_1) (\approx 20)$ . This difference is typically 7 and so a unit change in  $\Delta_i(t_1)$  affects the second term in Eq. (15) by about 14 % and the relative change in iWUE typically between 0 and 10 %. We note that Eq. (15) is nonlinear and so the numerical values given here are illustrative.

Equation (13) is evaluated for LPX and CESM by using the annual-mean  $\delta^{13}\text{C}$  signature of C3 plants for CESM (live stem) and LPX (GPP) within each pixel. We note that in CLM4.5 leaf boundary conductance is also explicitly modeled, and  $g_{\text{H}_2\text{O}}$  in Eq. (13) thus reflects the ratio of photosynthesis to the total conductivity through the leaf boundary layer and the stomata of water, whereas in LPX  $g_{\text{H}_2\text{O}}$  reflects the resistance by the stomata only. In CLM4.5, the ratio between the conductivity for  $\text{H}_2\text{O}$  and  $\text{CO}_2$  may vary between  $1.4(g_s \gg g_b)$  and  $1.6(g_b \gg g_s)$  (Eq. 6). Here, we have assumed for simplicity a factor of 1.6 for CLM4.5, LPX, and observational data. This simplification introduces an uncertainty of up to 11 % in computed trends for CLM4.5.

Turning to the tree-ring data, there are isotopic offsets between assimilated material and cellulose. The leaf-level model for fractionation is more representative for the bulk matter rather than a specific chemical compound such as cellulose. We correct for this isotope offset between cellulose and total organic matter ( $\delta^{13}\text{C}_{\text{plant-corrected}} = \delta^{13}\text{C}_{\text{plant cellulose}} - \text{offset}$ ) following Saurer et al. (2014) and using an offset of 1.2‰ for all tree species. This correction has a relatively small influence: as discussed above, a change in  $\delta^{13}\text{C}_{\text{plant}}$  by 1‰ affects the relative change in iWUE by about 10 %.

In the following, we will present and discuss annual or multiannual averages of the related variables  $\delta^{13}\text{C}$ ,  $c_i/c_a$ , discrimination  $\Delta_i$ , iWUE, and  $A/g$ . These values represent, similarly to Eq. (12), weighted averages. The time-varying carbon assimilation rate, or more generally, the assimilation

**Table 2.** Integrals and mean isotopic signatures of global carbon pools: steady state in the year 2000 (mean 1996–2005) and change over the 20th century for both models and an observational dataset (Carvalhais et al., 2014).

C reservoir (GtC)	CLM	LPX	Observations
In the year 2000			
GPP	168	149	–
vegetation	874	425	442
soil	3916	1710	2397
litter	82	260	–
leaf	21	24	–
Total C	5099	2405	–
Change over 20th century			
GPP	20	17	–
vegetation	–21	–55	–
soil	45	19	–
litter	8	–3	–
leaf	2	5	–
Total C	32	–35	–
C reservoir ( $\delta^{13}\text{C}$ ; ‰)	CLM	LPX	Observations
In the year 2000			
GPP	–24.9	–20.7	–
total C	–27.6	–23	–
total C [GtC ‰]	–140 660	–55 227	–
Change over 20th century			
GPP	–0.74	–0.45	–
total C	–0.00	0.21	–
total C [GtC ‰]	–904	1329	–

rate multiplied by the fraction of assimilates allocated to the carbon reservoir under consideration (e.g., leaves, tree ring) act as the weighting factors.

### 3 Results

#### 3.1 Primary productivity and carbon pools

We first compare GPP, transpiration, vegetation, and soil carbon stocks of the two models (Table 2, Fig. 2), as well as model results to observation-based estimates of vegetation carbon (Fig. 3; Carvalhais et al., 2014). Both models show the highest GPP per unit land area in the tropics and low GPP in arid regions. Overall, the GPP patterns are similar between the two models. However, the tropical maxima in GPP are about a third larger in CLM4.5 than in LPX. Simulated transpiration is similar for the two models.

Estimates of total vegetation carbon, including below and aboveground biomass, were derived by Carvalhais et al. (2014) from a collection of estimates for pantropical regions and for northern and temperate forests based on radar remote-sensing retrievals. The global carbon inventory of

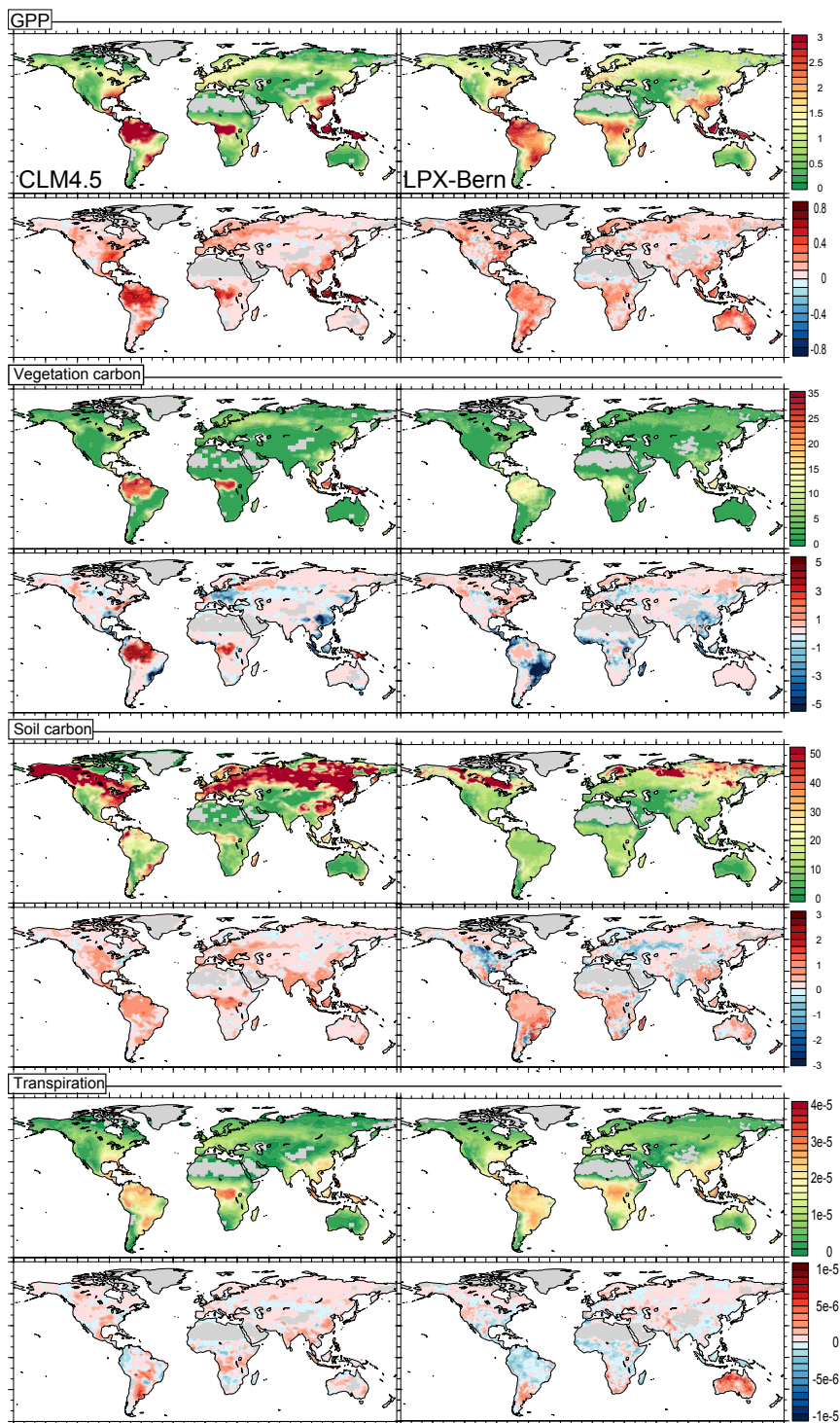
vegetation is overestimated by a factor of 2 by CLM4.5 and slightly underestimated by LPX compared to the estimate of Carvalhais et al. (2014, Table 2). CLM4.5 simulates too much vegetation carbon in northern mid-to-high latitudes and overestimates vegetation carbon stock by more than a factor of 2 in tropical forests (Fig. 3) (Negrón-Juárez et al., 2015; Koven et al., 2015a). Correspondingly, we expect a negative bias in the global-mean  $\delta^{13}\text{C}$  signature of vegetation in CLM4.5. LPX simulates vegetation carbon stocks in relatively good agreement with observation-based estimates (Fig. 3). Both models underestimate vegetation carbon in parts of southeastern Asia. Overall, the spatial correlation ( $r$ ) between modeled and observation-based vegetation carbon is 0.83 for CLM4.5 and 0.85 for LPX.

The global carbon inventory in soils of LPX is 1700 GtC, while CLM4.5 simulates a soil C inventory that is twice as large at 3900 GtC (Table 2). This larger inventory mainly stems from the large carbon stocks simulated by CLM4.5 in peatland and permafrost regions (Koven et al., 2013, 2015b) and in northern mid-latitude regions (Fig. 2). CLM4.5 includes formulation for carbon storage in deep soils. The large soil carbon inventory of CLM4.5 is in contrast to that of its predecessor, CLM4 (Oleson et al., 2010), which severely underestimated the global soil carbon reservoir by 50 % and more (Todd-Brown et al., 2013; Anav et al., 2013; Tian et al., 2015), especially at the northern high latitudes (Foreid et al., 2014). LPX, in the version applied here, does not include formulations for carbon storage below 2 m. An evaluation of peat and permafrost carbon stocks simulated by LPX is provided by Spahni et al. (2013). Data on soil carbon have particularly high uncertainties, with notable discrepancies between different datasets (e.g., Carvalhais et al., 2014; Hugelius et al., 2014).

Simulated GPP and carbon stocks change over the industrial period in response to increasing atmospheric  $\text{CO}_2$ , land use, climate change, and nitrogen deposition. Both models indicate an increase in GPP almost everywhere over the course of the 20th century (Fig. 2). Globally averaged GPP increases from 148 GtC yr<sup>–1</sup> in 1900 to 168 GtC yr<sup>–1</sup> in 2000 for CLM4.5 and from 132 to 149 GtC for LPX. In the case of CLM4.5 the increase is especially pronounced in the tropics, particularly in Indonesia (Fig. 2), whereas LPX simulates a large increase in GPP in Australia.

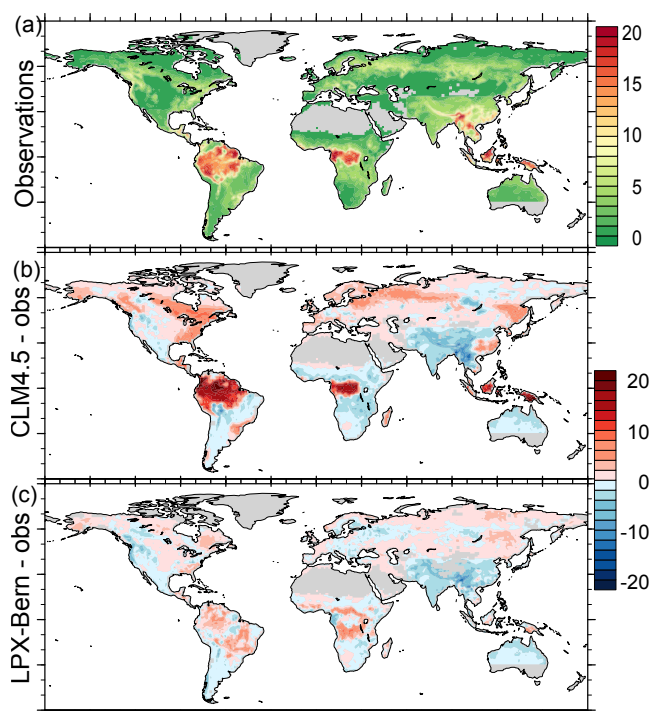
Simulated 20th century changes in annual-mean transpiration are generally small in both models, except in Australia for LPX and in parts of Latin America for CLM4.5. Generally, an increase in transpiration is found in boreal and temperate forest regions in both models. Transpiration is slightly decreasing in LPX and slightly increasing in CLM4.5 in most tropical forest regions.

For vegetation carbon, both models show large areas with decreasing C storage in the mid-latitudes (Europe, North America) and parts of the tropics, especially Southeast Asia, in response to deforestation (Fig. 2). Areas with a negative vegetation C balance are more widespread in LPX than



**Figure 2.** GPP ( $\text{kgC m}^{-2} \text{yr}^{-1}$ ), vegetation carbon ( $\text{kgC m}^{-2}$ ), soil carbon ( $\text{kgC m}^{-2}$ ), and transpiration ( $\text{mm s}^{-1}$ ) in the year 2000 (top) and the difference between 1900 and 2000 (below). The estimates are based on decadal means (1996–2005 and 1996–2005 minus 1896–1905).





**Figure 3.** Estimated modern distribution of vegetation carbon derived from observations (Carvalho et al., 2014) (top) and the differences of model minus observation-derived distributions for CLM4.5 (middle) and LPX (bottom). All results are in kilograms of carbon per square meter ( $\text{kgC m}^{-2}$ ) and averages for the decade 1996 to 2005 are used for the model distributions.

CLM4.5 in tropical and subtropical Africa and South America. LPX simulates a relatively small increase in the vegetation stocks of remaining “natural” tropical forests, whereas CLM4.5 shows a considerable increase in vegetation C in the remaining tropical forests of Africa, America, and Indonesia. This large increase in CLM4.5 is related to the strong stimulation of GPP and the long overturning timescale of vegetation carbon in tropical forests. As a result, the decrease in globally integrated vegetation C storage is more than 2 times larger for LPX than for CLM4.5 ( $-55$  to  $-21$  GtC; Table 2, Fig. 1b).

For soil C (Fig. 2), CLM4.5 shows a general increase over the 20th century which is especially pronounced in the tropics. For LPX the picture is more heterogeneous, with increases (decreases) in South America, Africa, Australia, and the high latitudes (India and parts of the US and Eurasia). Globally, the models simulate an increase of 45 (CLM) and 19 GtC (LPX), respectively (Table 2, Fig. 1). Overall, global carbon storage in the land biosphere increases by 34 GtC in CLM4.5 and decreases by 35 GtC in LPX over the 20th century. Independent estimates of the difference between anthropogenic emissions and ocean uptake plus an increase in atmospheric  $\text{CO}_2$  suggest an increase in land carbon storage by roughly 20 GtC (Le Quéré et al., 2015) over the 20th century.

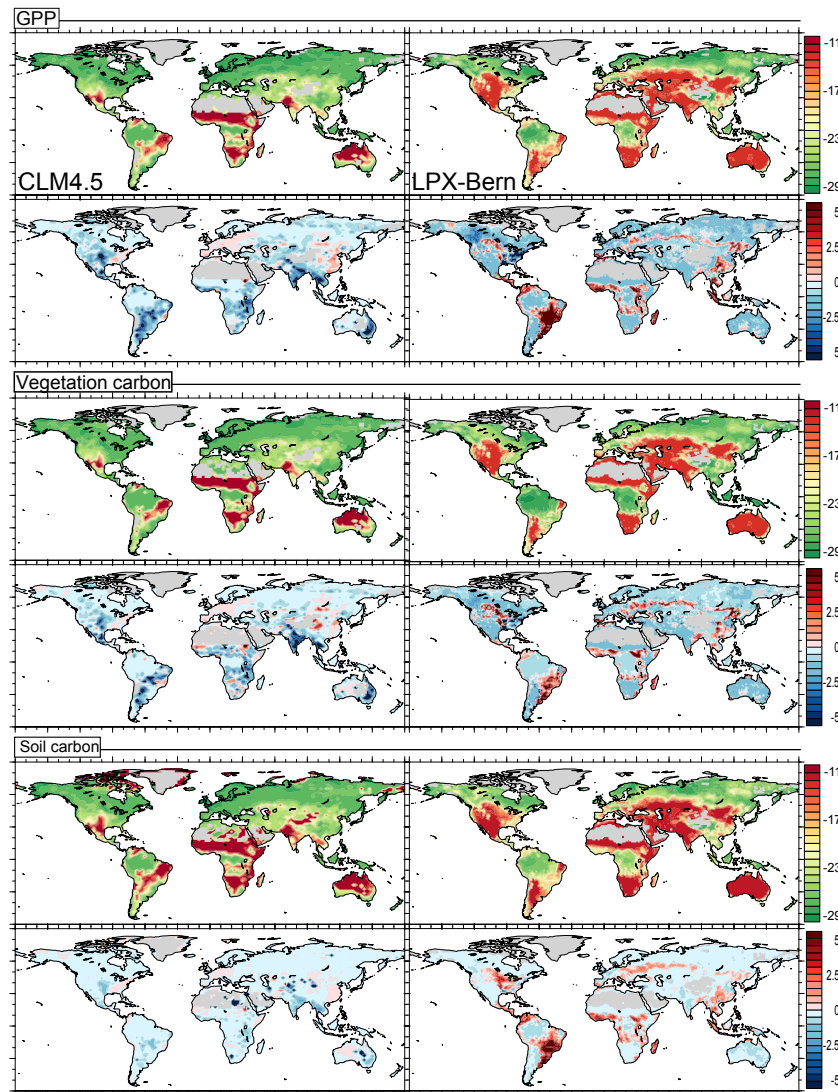
### 3.2 Simulated $\delta^{13}\text{C}$ of primary productivity, vegetation, and soil carbon: spatial distributions and 20th century trends

Global maps of the  $\delta^{13}\text{C}$  signature of GPP, vegetation, and soil carbon in the year 2000 and related 20th century changes are shown in Fig. 4. We note that isotopic fractionation, typically on the order of 20‰ for C3 plants, is only 4.4‰ for C4 plants, growing in high-temperature, high-light-intensity regions. The grid-cell average  $\delta^{13}\text{C}$  signature of GPP therefore reflects to a large extent the occurrence or absence of C4 plants. Vegetation distribution is prescribed in CLM4.5 and simulated in LPX, and CAM plants are not represented in either model. Both models show less negative isotopic signatures in arid and semi-arid low-latitude regions. In comparison to CLM4.5, LPX simulates in the year 2000 much larger areas with  $\delta^{13}\text{C}$  larger than  $-16$ ‰. These areas include central and western parts of the US, Argentina, large parts of southern Asia, and parts of southern Australia. This is related to a larger share of C4 plants in these regions in LPX than in CLM4.5.

Atmospheric  $\delta^{13}\text{C}$  decreases by about 1.3‰ over the 20th century (Fig. 1a). Thus, without a change in isotopic discrimination, we would expect an equal decrease in the GPP signature. Accordingly, CLM4.5 and LPX show a decrease in  $\delta^{13}\text{C}$  of GPP in most areas (Fig. 4).

In LPX, large 20th century increases in the  $\delta^{13}\text{C}$  signature of GPP of up to 5‰ are simulated in many low latitude and mid-latitude areas, indicating an expansion of C4 plants under warming and rising  $\text{CO}_2$  as well as the influence of land use. Processes such as the conversion of forests into C4 pastures in the tropics can substantially affect the isotopic signature of total terrestrial vegetation at a location (Townsend et al., 2002; Kaplan et al., 2002). In CLM4.5, the influence of the negative atmospheric  $\delta^{13}\text{C}$  trend is offset mainly by changes in discrimination in the eastern US, Europe, and eastern Asia, resulting in slightly positive  $\delta^{13}\text{C}$  changes in these areas (Fig. 4). Note that, in contrast to LPX, crops are treated as C3 plants in CLM4.5 (Oleson et al., 2013). This explains the land-use-related, differing trends between models in regions such as North and South America, Africa, and Southeast Asia. Distribution and 20th century change in  $\delta^{13}\text{C}$  of vegetation and soil are very similar to the distribution of  $\delta^{13}\text{C}$  of GPP. However, temporal trends are generally smaller in the soil carbon pools than for GPP.

The average  $\delta^{13}\text{C}$  signature of the globally averaged pool of vegetation carbon is more negative than that of soil and leaf carbon (Fig. 1). This reflects the share of organic matter assimilated by the C4 path versus that by the C3 path in these globally averaged pools. Generally, the share of C4-derived organic matter is much smaller than the contribution by C3-derived matter. Correspondingly, the average  $\delta^{13}\text{C}$  signature of globally averaged C pools is strongly negative and closer to that of C3 plants. The contribution of C4-derived organic matter is very small for the globally averaged vegetation pool



**Figure 4.**  $\delta^{13}\text{C}$  (‰) of GPP, vegetation carbon and soil carbon in the year 2000 (top) and the change from 1900 to 2000 (below). The estimates are based on decadal means (1896–1905 and 1996–2005).

and absent for the stem carbon pool, but noticeable for the leaf and soil carbon pools. Further, the globally averaged leaf  $\delta^{13}\text{C}$  signature decreases in both models over the 20th century, mainly in response to changes in the atmospheric  $\delta^{13}\text{C}$  source. Trends are less developed in the other global pools due to their longer residence times.

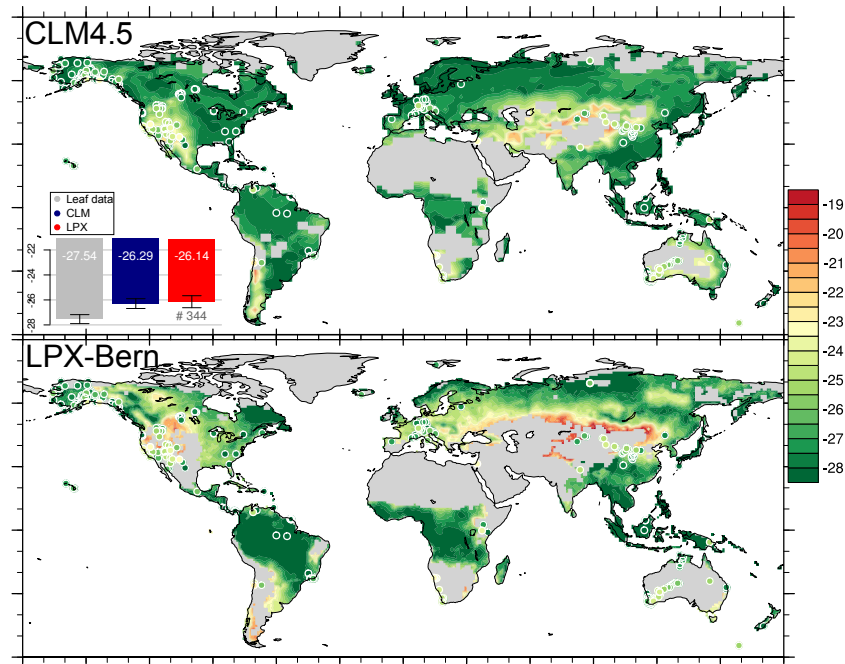
There is a substantial offset between the models for globally averaged soil and vegetation pools, with CLM4.5 being around 5‰ more negative (Table 2). In addition to the already mentioned widespread, comparably less negative  $\delta^{13}\text{C}$  signatures simulated by LPX, this can be attributed to the spatial distribution of carbon pools in CLM4.5. As is evident from Fig. 3, CLM4.5 simulates higher vegetation and soil carbon stocks in the high latitudes and tropical forest regions than LPX. Since these regions are characterized by C3 plant cover and thus comparably negative signatures (see Fig. 4),

the result is a shift of the global averages towards more negative  $\delta^{13}\text{C}$  in CLM4.5 compared to LPX.

### 3.3 Modeled versus measured leaf $\delta^{13}\text{C}$

In this section, we evaluate how well modeled  $\delta^{13}\text{C}$ , and thus isotopic discrimination, of C3 tree species compares with a global compilation of  $\delta^{13}\text{C}$  measurements on leaf material from C3 plants Cornwell et al. (2016, Figs. 5, 6). Unlike the previous analyses, this comparison is not (or is hardly) affected by land use as the comparison is only for C3 trees on unmanaged lands. However, a few caveats apply. We compare grid-cell averages (with GPP or mass as weights; see Sect. 2.4) from all simulated C3 plants with site measurements for individual species. Difference in  $\delta^{13}\text{C}$  are reported for different species. In addition, differences within





**Figure 5.**  $\delta^{13}\text{C}$  as measured on leaves of C3 trees (colored circles; Cornwell et al., 2016) and as simulated by (a) CLM4.5 and (b) LPX (shading) for the decade 1996 to 2005. Samples for the measurements were taken between 1975 and 2014. The bar plot shows the average over all measurements (gray) and the average signature of C3 trees of the corresponding grid cells for CLM4.5 (blue) and LPX (red). The number below the red bar indicates the number of available measurements.

a species, even growing at the same site, can be as large or even larger as those between species (McCarroll and Loader, 2004; Leuenberger, 2007, and references therein). In addition,  $\delta^{13}\text{C}$  in the canopy air may deviate from the prescribed atmospheric  $\delta^{13}\text{C}$ , representative of tropospheric background air. Deviations may arise due to varying additions of isotopically depleted respired carbon and of carbon from fossil sources to local air.

The bar plots in Figs. 5 and 6 indicate the mean  $\delta^{13}\text{C}$  of the leaf data and of modeled grid-cell averages for C3 plants at the measurement locations for observations, CLM4.5, and LPX, respectively. On average,  $\delta^{13}\text{C}$  of all 344 leaf samples is  $-27.54\text{‰}$  compared to a corresponding average of  $-26.29\text{‰}$  for CLM4.5 and  $-26.14\text{‰}$  for LPX. This suggests a discrimination of 19.5, 18.3 and 18.1‰ relative to the atmospheric  $\delta^{13}\text{C}$  signature of approx.  $-8\text{‰}$ , respectively. According to Eq. (4), these values correspond to a ratio between internal and atmospheric partial pressure,  $c_i/c_a$ , of 0.67 for the leaf data and of 0.63 and 0.61 for CLM4.5 and LPX, respectively. The bias of the models is particularly large in arid regions and larger for LPX than for CLM4.5, whereas good agreement between models and leaf data is found in the remaining regions, e.g., Europe or Alaska (Fig. 6).

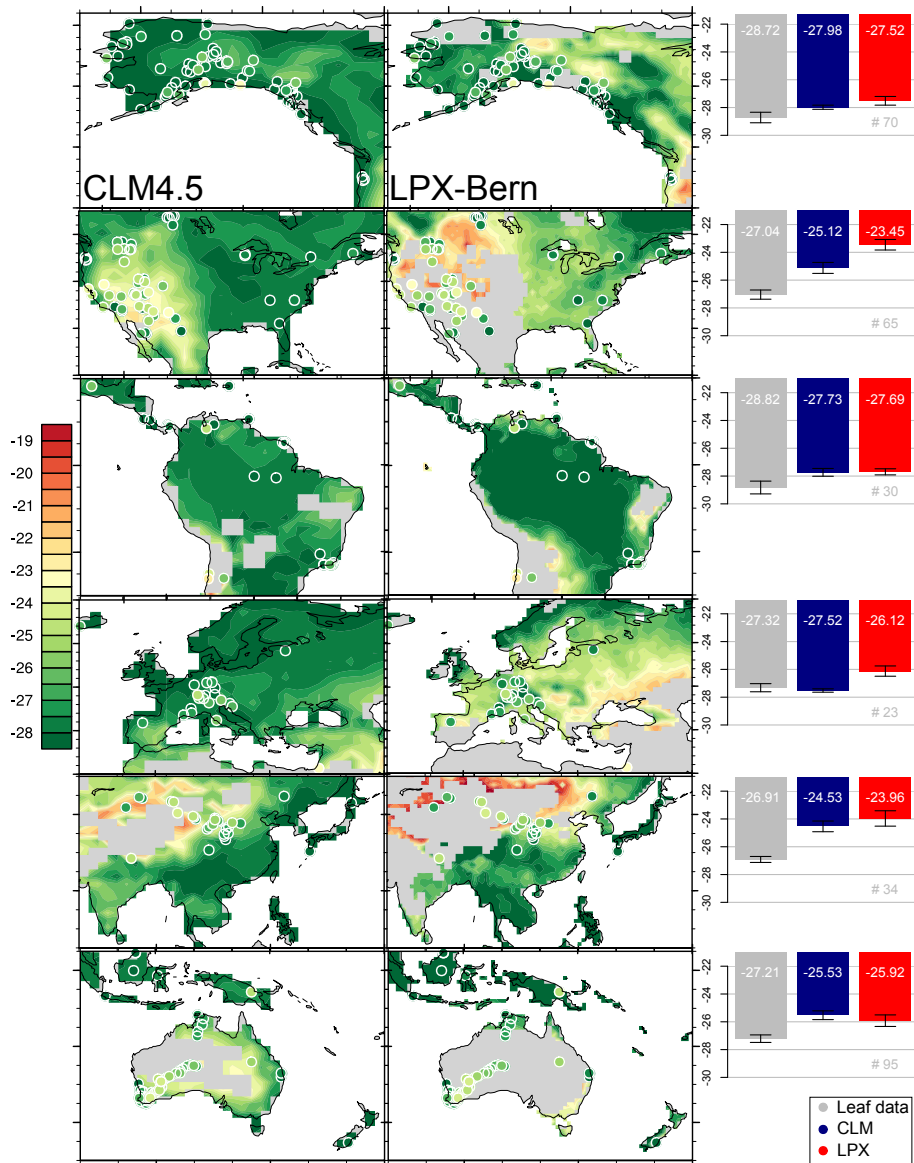
The  $\delta^{13}\text{C}$  of C3 plants from CLM4.5 and LPX show similar spatial gradients. Both models reasonably capture the observations, though spatial correlations between data and

models are low (CLM:  $r = 0.36$ ; LPX:  $r = 0.34$ ). Root mean square errors (RMSEs) between models and data are  $2.42\text{‰}$  (CLM) and  $3.22\text{‰}$  (LPX). The largest discrimination and most negative  $\delta^{13}\text{C}$  is simulated in high northern latitude regions and in tropical moist forests, with the lowest discrimination in arid regions of inner Asia, southwestern North America, Patagonia, southern Africa, and parts of Australia. Low discrimination and high (less negative)  $\delta^{13}\text{C}$  correspond to low stomatal conductance, low internal leaf  $\text{CO}_2$  partial pressure and therefore reduced assimilation. However, these high  $\delta^{13}\text{C}$  values are not supported by the leaf measurements, when assuming that the leaf samples are regionally representative (Fig. 6). Maxima in  $\delta^{13}\text{C}$  are a few per mill higher for LPX than for CLM4.5 in these regions. This suggests a stronger downregulation of stomatal conductance by water stress in LPX than in CLM4.5 in these regions.

In summary,  $\delta^{13}\text{C}$  and, by implication, discrimination of C3 trees is reasonably represented in both models, when considering the caveats discussed at the beginning of this section and the simplicity of the isotopic model approach. However, both models tend to overestimate  $\delta^{13}\text{C}$  in comparison with the leaf data in many arid regions.

### 3.4 $\delta^{13}\text{C}$ – century-scale trend

Next, simulated century-scale trends in the discrimination,  $\Delta_i$  (Eq. 5, see also methods), of C3 tree species are discussed and compared to the corresponding trends derived from 76

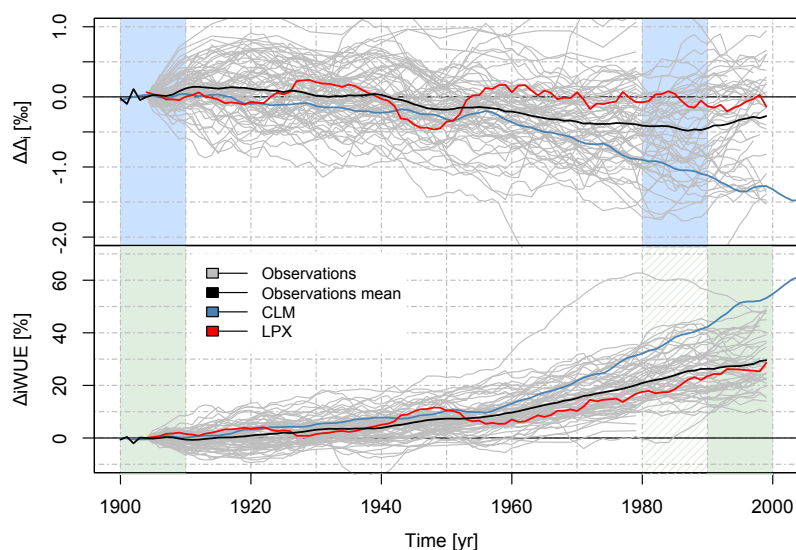


**Figure 6.** Same as Fig. 5 for selected regions.

tree-ring  $\delta^{13}\text{C}$  records (Figs. 7 to 10 and Table A1). Again, grid-cell averages for C3 trees are compared to site data. Similar caveats to those discussed for the comparison between leaf measurements and modeled  $\delta^{13}\text{C}$  apply for this trend analysis. The term “average” refers again to an average over only those grid cells with measurements. Out of 76 sites, 74 are located in three regions (Fig. 9), with more than half of the sites (51) in Europe, and with only 7 records in Asia and 16 records in western North America. For these two regions, the comparison of regional model and data averages is therefore hampered by the scarcity of site data and the complex topography along the Rocky Mountains, while the “global” average is biased towards Europe.

On average, discrimination inferred from the tree-ring records varies within a few tens of a per mill in the first and second half of the 20th century (Fig. 7). There is a transition to less discrimination in the 1940s, with no clear trend before and afterwards. Similar to the measurements, LPX-Bern yields no long-term trend in the discrimination of C3 trees. In contrast, discrimination of C3 trees simulated by CLM4.5 shows a trend towards smaller values over the 20th century. The discrepancy between tree-ring data and CLM4.5 results grows towards the present and is larger than 1‰ after year 2000.

Next, we analyze spatial and regional changes in the discrimination of C3 trees by comparing the differences in  $\Delta_i$  between the decades 1980–1989 and 1900–1909. CLM4.5



**Figure 7.** 20th century changes in the discrimination  $\Delta_i$  of C3 trees  $\left( \left( \delta^{13}C_a - \delta^{13}C_{\text{plant}} \right) / \left( 1 + \frac{\delta^{13}C_{\text{plant}}}{1000} \right) \right)$  and iWUE (%) as measured on tree rings (black) and modeled by CLM4.5 (blue) and LPX (red). Observations are represented by the average over all measurements (see Table A1), models by the average of the mean grid-cell signature of C3 trees and for all model grid cells where measurements are available. Values are given with respect to the decade 1900–1909; the background colors indicate the respective decades investigated for changes in discrimination (Figs. 8, 9, 10) and iWUE (Figs. 10, 11, 12). Absolute values of iWUE for the decade 1900–1909 are 78 for the observation and LPX-Bern and 50 for CLM4.5. Standard deviations calculated over all observations of century-scale changes (1980s minus 1900s) are 0.72 for  $\Delta_i$  and 9.76 for iWUE.

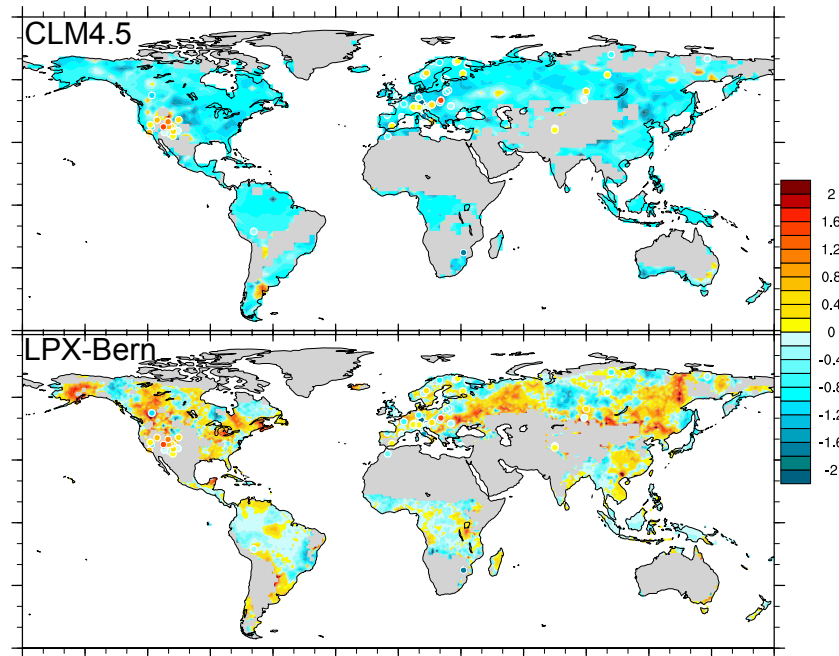
simulates a decreasing trend in the discrimination  $\Delta_i$  of C3 trees almost everywhere where C3 trees grow. In other words, the ratio of internal to atmospheric  $\text{CO}_2$  partial pressure,  $c_i/c_a$ , decreases over the 20th century. The simulated decrease in  $\Delta_i$  for CLM4.5 is larger than suggested by the tree-ring data. The average change in discrimination ((1980–1989) – (1900–1909)) is  $-0.36$  in the tree-ring data and  $-0.94$  in CLM4.5. The observations show on average a slight positive change in  $\Delta_i$  ( $+0.18$ ) in the North American region, a slight negative change ( $-0.13$ ) in the Asian region, and a relatively large decrease in  $\Delta_i$  in Europe ( $-0.54$ ) (Fig. 9). The three corresponding regional averages for CLM4.5 are more negative by between 0.52 and 0.79. LPX simulates generally small (positive or negative) changes in  $\Delta_i$  of C3 trees over the last century. Exceptions are areas at the margin of C3 tree-covered regions such as the southern limit of the boreal tree belt that show a large positive change (Fig. 8). For grid cells with measurements, the average change in  $\Delta_i$  for LPX is very small with  $+0.06$  (Fig. 10). For the three selected regions, LPX simulates changes in  $\Delta_i$  that are between 0.45 to 0.54 more positive than suggested by the tree-ring records (Fig. 9). We note that the agreement between tree-ring data and LPX is better for previous and later decades (Fig. 7).

The correlations  $r$  between models and observation-derived changes in  $\Delta_i$  are relatively low, with values of 0.40 (CLM) and 0.27 (LPX). Here, possible explanations are (i) the strong spatial heterogeneity of both measurements and model simulations combined with a limited number of obser-

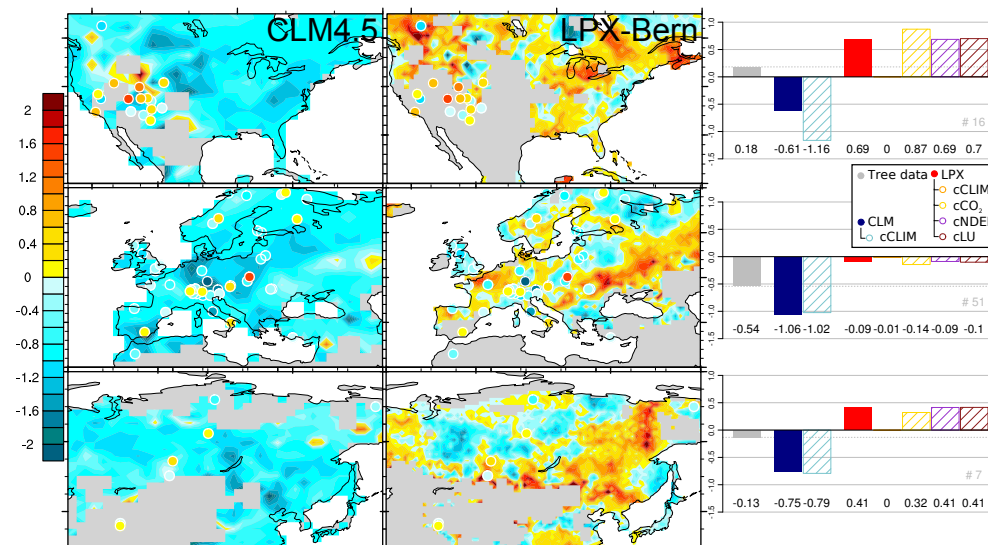
vational data and the overall small changes in discrimination of, for example, only  $-0.36$  for the average of tree-ring data or (ii) that the models do not properly represent photosynthesis and stomatal conductance. The RMSEs of changes in  $\Delta_i$  are 0.93 (CLM) and 1.07 (LPX).

The factorial simulations with LPX reveal that average changes in  $\Delta_i$  attributable to individual drivers are small. Thus, the relatively small changes in discrimination simulated by LPX are not the result of offsetting influences of different drivers. In detail, a somewhat complex interaction of the driving factors in shaping the change in  $\Delta_i$  and nonnegligible interaction between climate and  $\text{CO}_2$  is found. Keeping nitrogen deposition or land use constant generally has a negligible influence on the change in  $\Delta_i$  (Fig. 10). On average, a positive change in  $\Delta_i$  is attributed to the  $\text{CO}_2$  change for all sites ( $+0.03$ ), the European sites ( $+0.05$ ), and the Asian sites ( $+0.09$ ) and a negative change for the North American sites ( $-0.18$ ). Thus, the increase in  $\text{CO}_2$  does not cause a general downregulation of  $c_i/c_a$  in LPX. The influence of climate is small on average over all sites ( $+0.07$ ) and for the European sites ( $-0.08$ ). At the North American sites and the few Asian sites, climate change tends to increase discrimination by about 0.7 and 0.4, respectively.

For CLM4.5, the change in  $\Delta_i$  attributed to climate change is small, except for the North American sites. There, a positive influence ( $+0.55$ ) similar to that found for LPX is inferred. The other drivers together cause on average a change in discrimination between  $-0.79$  and  $-1.16$  in the three re-



**Figure 8.** Century-scale change in the discrimination  $\Delta_i$  of C3 trees. The discrimination is calculated from  $\delta^{13}\text{C}$  tree-ring data (colored circles) and (a) CLM4.5 and (b) LPX model results using Eq. (5). The changes are based on decadal means (1980s minus 1900s).

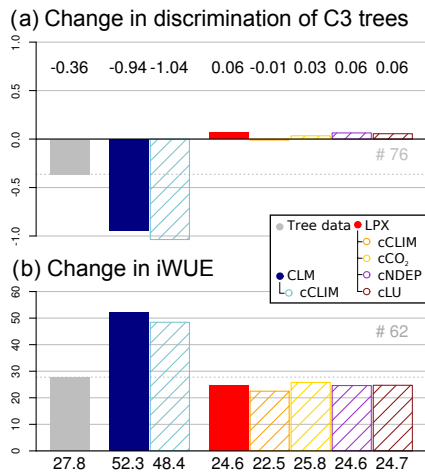


**Figure 9.** Same as Fig. 8 but for three selected regions. The bar plots show the regional average change in discrimination of C3 trees as calculated from tree-ring  $\delta^{13}\text{C}$  data (gray) and from results of the standard simulations of CLM4.5 (filled blue) and LPX (filled red) as well as from factorial runs (pattern). Individual driving factors (climate,  $\text{CO}_2$ , N-deposition, and land use) were kept constant in the factorial runs, as explained in the main text and indicated by the legend. Model averages are computed from the mean grid-cell discrimination of C3 trees and for all model grid cells where tree-ring estimates are available. The number of available tree-ring records is indicated.

gions. This suggests that the simulated decrease in discrimination and in  $c_i/c_a$  in the CLM4.5 runs is mainly linked to increasing  $\text{CO}_2$  and a corresponding downregulation of  $c_i/c_a$  (Eq. 6). The downregulation in CLM4.5 is larger than suggested by the tree-ring records.

Soil moisture and stomatal conductance are coupled and influence each other and discrimination. 20th century changes in soil moisture are small in the factorial simulations where climate is kept constant, while  $\text{CO}_2$  and other forcings vary. For the standard model setup, changes in soil





**Figure 10.** Century-scale changes in (a) discrimination  $\Delta_i$  and (b) iWUE (%) of C3 trees as calculated from tree-ring  $\delta^{13}\text{C}$  data (gray) and from results of the standard simulations of CLM4.5 (filled blue) and LPX (filled red) as well as from factorial runs (pattern). Individual driving factors (climate,  $\text{CO}_2$ , N-deposition, and land use) were kept constant in the factorial runs, as explained in the main text and indicated by the legend. The number of available records is indicated in each subpanel. All estimates are based on decadal means: (a) 1980s minus 1900s; (b) 1990s minus 1900s.

moisture simulated by CLM and LPX are also small in large parts of Europe and Asia, where most of our tree-ring data are located. Despite these small changes in soil moisture, large differences in discrimination changes are found between the two models in these simulations and regions (Fig. 9). This suggests that the primary reason for the model–model difference in simulated 20th century changes in discrimination is rooted in the different parameterizations of the photosynthesis–conductance coupling.

### 3.5 $\delta^{13}\text{C}$ – century-scale trend in iWUE

Of particular importance are changes in stomatal conductance and photosynthetic carbon assimilation since they are the primary controls of plant–atmosphere water and  $\text{CO}_2$  exchange, carbon assimilation, and, ultimately, tree growth (Lambers et al., 2008). Changes in the ratio of these two processes, also termed iWUE (see Eq. 13), thus reflect a change in assimilation, in conductance, or in both (Scheidtger et al., 2000; Saurer et al., 2004, 2014).

Similar to in the previous sections, we compare relative changes in iWUE (Eq. 15) from the tree-ring records with model results (Figs. 10, 11, 12). Changes are evaluated between the decade 1990–1999 and decade 1900–1909, as in Saurer et al. (2014).

As shown by Eq. (15), the relative change in iWUE increases equally to the relative change in atmospheric  $\text{CO}_2$  in the absence of changes in discrimination. This is equal to 23 % for the change from 1900–1909 to 1990–1999. A

negative change in discrimination, as simulated for CLM4.5, contributes to a further increase in iWUE.

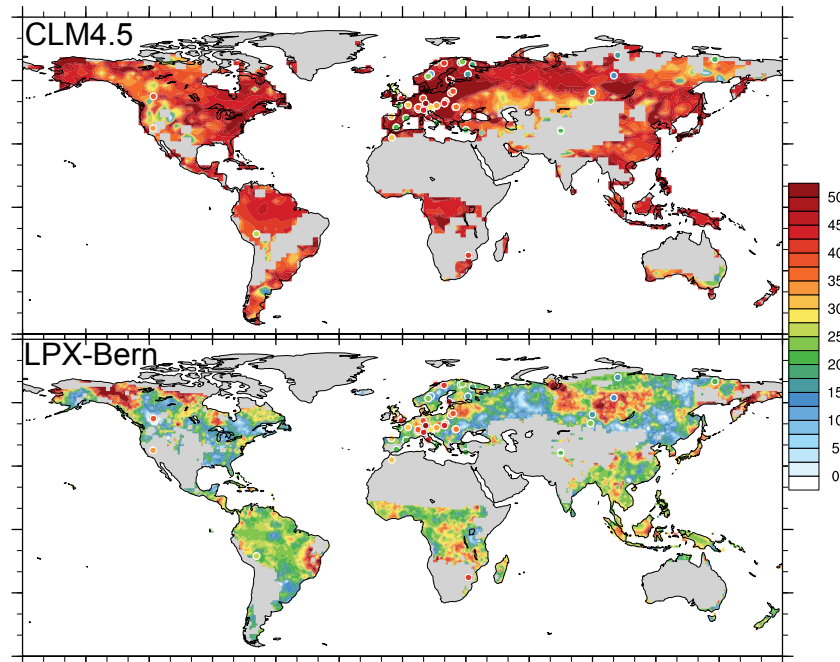
In the standard setup (see also maps), both models show a substantial increase in iWUE over the century of approx. 52 % (CLM) and 25 % (LPX). The globally averaged iWUE derived from  $\delta^{13}\text{C}$  measurements show a value of 28 %, which concurs with previous studies reporting increases in iWUE of 27.8 and approx. 30 % for European forests (Saurer et al., 2014; Frank et al., 2015) and 17 % for high-latitude forests (Trahan and Schubert, 2016). While LPX is in good agreement with the available observations (both globally and regionally), CLM4.5 appears to overestimate 20th century changes in iWUE by about a factor of 2 in Europe and the Asian region.

The drivers behind modeled changes in iWUE can be investigated based on the sensitivity experiments already discussed in the previous section for discrimination. As expected, all simulations show similar changes in iWUE in LPX. The small changes in discrimination simulated by LPX do not strongly affect iWUE, and the relative change in iWUE of LPX (24.6 %) is close to the relative change in atmospheric  $\text{CO}_2$  (23 %). Simulations with and without climate change with CLM4.5 yield similar results, pointing again to a downregulation of  $c_i/c_a$  under rising  $\text{CO}_2$  by the implemented nitrogen limitation.

## 4 Discussion

This study presents the implementation of  $\delta^{13}\text{C}$  in two global land biosphere models, CLM4.5 and LPX-Bern 1.3, and a global compilation of 20th century tree-ring  $\delta^{13}\text{C}$  records. Results from isotope-enabled simulations over the industrial period are investigated for regional carbon stocks and carbon isotope signatures (Figs. 1 to 4) and for the global carbon and  $^{13}\text{C}$  budgets (Table 2) of the land biosphere. The performance of the two models in terms of modern isotopic discrimination of C3 plants is evaluated by comparing model results with a global compilation of  $\delta^{13}\text{C}$  measurements on leaf material (Figs. 5, 6). The main focus of the study is on the analysis of 20th century changes in isotopic discrimination,  $\Delta_i$ , in the ratio of  $\text{CO}_2$  concentrations between the stomatal cavity and the atmosphere,  $c_i/c_a$ , and in the ratio between assimilation and stomatal conductance,  $A/g$ , termed intrinsic water-use efficiency iWUE. The comparison of model results with observational estimates from the  $\delta^{13}\text{C}$  tree-ring records permits us to evaluate the performance of the two models with respect to linkages between photosynthesis and stomatal conductance on the leaf level (Figs. 7 to 12).

The “minimal” discrimination model of Farquhar et al. (1989) was implemented in CLM4.5 and LPX-Bern. This model assumes fixed discrimination for C4 plants and that discrimination by C3 plants is directly proportional to  $c_i/c_a$ . Genetic species-specific variations in  $\delta^{13}\text{C}$  are not considered here, though they can be considerable (Marshall et al.,



**Figure 11.** Century-scale changes in iWUE (%) of C3 trees as calculated from  $\delta^{13}\text{C}$  tree-ring data (colored circles) and (a) CLM4.5 and (b) LPX model results. The changes are based on decadal means (1990s minus 1900s).

2008; Yang et al., 2015). The influence of rooting depth, water transport systems, root-to-leaf distance, leaf morphology, and irradiance (sunlit versus shaded) on discrimination is neglected. However, these factors may affect discrimination. Reported isotopic differences within a species, even between those growing at the same site, can be as large as or even larger than those between species (McCarroll and Loader, 2004; Leuenberger, 2007). We also neglect fractionation between different pools within plants and soils (Wingate et al., 2010; Brüggemann et al., 2011). Despite these limitations, we provide a comprehensive framework for a model–data comparison and derive new insights into patterns of physiological plant adaptation to 20th century environmental changes.

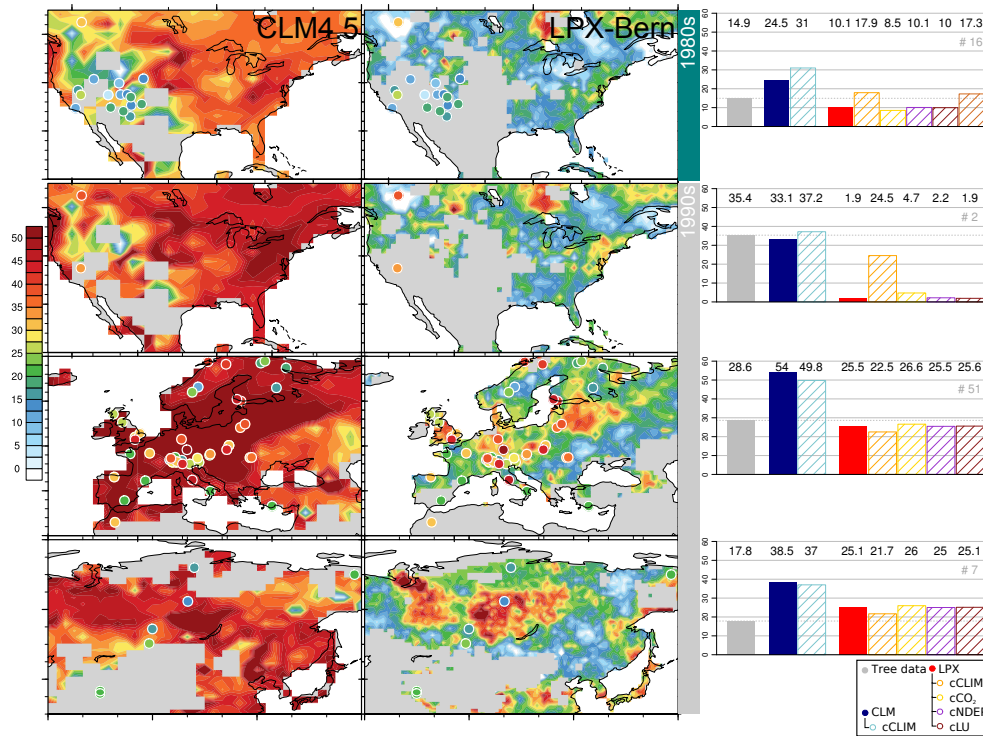
#### 4.1 Isotopic signatures, pools, and fluxes of the global land biosphere

A high spatial correlation of simulated vegetation carbon with observational estimates is found for both models. However, CLM4.5 overestimates carbon stocks in vegetation by a factor of 2 or more in many regions compared to the data of Carvalhais et al. (2014), while data–model agreement is reasonable for LPX (Fig. 3). Global soil carbon stock is 1700 GtC in LPX and much smaller than the 3900 GtC simulated by CLM4.5. Larger soil carbon inventories in CLM4.5 than LPX are mainly simulated in northern mid-latitudes and high latitudes (Fig. 2). Only the top 2 m of soils are considered in LPX, while CLM4.5 includes deeper soil layers.

Both models feature most negative  $\delta^{13}\text{C}$  in high-latitude and tropical-forest regions (Fig. 4) and isotopically heavier signatures in semi-arid and arid regions, where C4 plants are typically abundant. The global average assimilation-weighted  $\delta^{13}\text{C}$  signature of GPP is  $-20.6\text{‰}$  in LPX and  $-24.9\text{‰}$  in CLM4.5 in the year 2000. The associated discrimination is  $12.4\text{‰}$  in LPX and  $16.7\text{‰}$  in CLM4.5. The CLM4.5 estimate is within the range (15.7 to 18.1‰) of previous studies, as summarized in Suits et al. (2005) and Scholze et al. (2008). This may point to a too-large abundance of C4 plants in LPX. Differences in soil and vegetation carbon and in C3 and C4 plant abundance also affect the global isotopic budgets of the two models, as the relative importance of C4-derived plant and soil material is less in CLM4.5 than in LPX. On global average, the mean  $\delta^{13}\text{C}$  signature of all land biosphere carbon is 4.6‰ more negative in CLM4.5 than in LPX (Table 2).

Turning to 20th century changes, both models simulate a widespread and strong increase in GPP (Fig. 2), mainly in response to  $\text{CO}_2$  fertilization under increasing atmospheric  $\text{CO}_2$ . On the other hand, 20th century changes in transpiration are generally small in both models (Fig. 2). The two models bracket independent estimates of the net change in global land biosphere carbon stocks over the last century (20 GtC), with CLM4.5 showing slightly larger uptake (35 GtC) and LPX-Bern 1.3 showing a release of carbon (35 GtC) instead of an uptake.

Land use is treated differently in the two models. In CLM4.5, C3 and C4 species are replaced by a C3 crop



**Figure 12.** Same as Fig. 11 but for three selected regions. The bar plots show the regional average change in iWUE (%) over all tree-ring measurements (gray) and the average for CLM4.5 (blue) and LPX (red) of the mean grid-cell iWUE of C3 trees and for all model grid cells where tree-ring estimates are available. Individual driving factors (climate, CO<sub>2</sub>, N-deposition, and land use) were kept constant in the factorial runs (patterns), as explained in the main text and indicated by the legend in the bar plots. The number of available records is indicated in each subpanel. All estimates are based on decadal means: (a) 1980s minus 1900s; (b, c, d) 1990s minus 1900s.

when land is converted to cropland. This results in a negative 20th century change in  $\delta^{13}\text{C}$  of GPP of several per mill (grid-cell average) in tropical and subtropical regions affected by land use (Fig. 4). In contrast, in LPX, C3 and C4 crops have identical PFT parameters to C3 and C4 grasses and grow in competition on pasture and cropland. Thus, conversion of tropical and subtropical forests (C3 trees) to cropland or pasture results in an increase of C4 grasses and a decrease of C3 plants. Correspondingly, a positive 20th century change in  $\delta^{13}\text{C}$  of up to 5‰ is simulated in regions undergoing land-use changes (Fig. 4). The implication is that for atmospheric  $\delta^{13}\text{C}$  budget analyses (Keeling et al., 1989; Ciais et al., 1995; Joos and Bruno, 1998; Scholze et al., 2008; van der Velde et al., 2013), the correct crop type (C3 versus C4) should be specified in the models.

#### 4.2 $\delta^{13}\text{C}$ in leaves of C3 plants: modern distribution

The mean and spatial gradients in discrimination of C3 trees simulated by CLM4.5 and LPX are evaluated using the leaf  $\delta^{13}\text{C}$  data of Cornwell et al. (2016). Both models reasonably represent the observation-based distribution in discrimination of C3 trees, though modeled discrimination is on average too small compared to the measurements, particularly

in arid regions (Figs. 5, 6). The low discrimination in arid regions may be due to a mismatch in scale between local site conditions and grid-cell averages. This could be due to the fact that trees at sites with relatively good growing conditions were selected for the  $\delta^{13}\text{C}$  analysis, while modeled trees experience grid-cell average soil water conditions.

In applications with the predecessor of LPX (Joos et al., 2004; Scholze et al., 2008),  $\delta^{13}\text{C}$  was implemented following Scholze et al. (2003) with discrimination modeled following Lloyd and Farquhar (1994). Here, we adjusted the discrimination formulations and instead used the simpler formulations of Farquhar et al. (1989) for consistency with CLM4.5 and with the computation of iWUE from tree-ring  $\delta^{13}\text{C}$  measurements. We note that our conclusions do not depend on this choice. LPX yields similar 20th century changes in discrimination and iWUE for both formulations. However, simulated  $\delta^{13}\text{C}$  of carbon assimilated by C3 trees is generally less negative (by about 2‰) when applying the Lloyd and Farquhar (1994) formulation, and agreement with leaf  $\delta^{13}\text{C}$  is less favorable.

The difference between the two implementations arises from additional processes considered in the approach of Lloyd and Farquhar (1994) and from different parameter choice. Here, fractionations associated with the diffusion of

CO<sub>2</sub> from the stomatal cavity to the cell wall, entrance of CO<sub>2</sub> in solution at the cell wall, and transport within the cell as well as photorespiration are neglected. The discriminations by the first three processes are set to be constant in the earlier implementation, following Scholze et al. (2003), neglecting a minor temperature dependency associated with the carboxylation by PEP-C (Lloyd and Farquhar, 1994). The discrimination associated with respiration varies with atmospheric CO<sub>2</sub> and the photocompensation point, but is small. In addition,  $b$ , the discrimination during photosynthetic fixation, is set to 27 in this study and to 27.5 in the earlier implementation. Overall, the consideration of the additional processes and the difference in  $b$  result in an approximately constant offset between the two implementations. This highlights that absolute values of discrimination depend on uncertain model parameters. Agreement or disagreement between leaf and model data (or tree-ring and model data) concerning absolute levels of  $\delta^{13}\text{C}$  (Figs. 5, 6) may not be interpreted as an indication of the performance of the conductance–photosynthesis module.

### 4.3 20th century changes in carbon isotopes and water-use efficiency of C3 plants

A set of 76 20th century  $\delta^{13}\text{C}$  tree-ring chronologies, mainly from Europe, boreal Asia, and western North America, was compiled (Table A1). The  $\delta^{13}\text{C}$  tree-ring data show on average little to no change in isotopic discrimination (Fig. 7). It remains unclear whether there is an overall small decrease in discrimination over the 20th century, given the still limited number of records and the large variability of the averaged and individual  $\delta^{13}\text{C}$  records. Small or no changes in discrimination of C3 plants imply that  $c_i/c_a$  remained roughly unchanged over the 20th century. It also implies that the change in iWUE is approximately equal to the relative change in atmospheric CO<sub>2</sub> (Eq. 15). This change is about 25 % over the 20th century and 43 % since preindustrial times. Recall, however, that isotopic signatures and the related variables ( $c_i/c_a$ ,  $\Delta_i$ , iWUE,  $A/g$ ) as considered here represent annual or multiannual averages that have been weighted by C assimilation or allocation.

Discrimination  $\Delta_i$ ,  $c_i/c_a$ , and iWUE ( $A/g$ ) as well as their changes are closely related. These variables hold, in the framework applied in this study (e.g., Eqs. 4, 5, 13, 15), basically the same information. For iWUE this information is transformed by the known atmospheric CO<sub>2</sub> evolution. As shown by Eq. (15), iWUE increases in proportion to CO<sub>2</sub> in the absence of a change in discrimination. A substantial increase in discrimination of more than 2 ‰ would be required to offset this change. It is therefore no surprise that Silva and Horwath (2013) find an increase in iWUE when using randomized  $\delta^{13}\text{C}$  records in a Monte Carlo analysis instead of actual tree-ring data. Their finding does not, however, invalidate the usefulness of iWUE as a physiological meaningful interpretation of  $\delta^{13}\text{C}$  tree-ring records, particularly as many

studies have shown that nonrandomized  $\delta^{13}\text{C}$  measurements contain well-known environmental signals ranging from the Suess effect to interannual to centennial changes in climate.

We applied the tree-ring  $\delta^{13}\text{C}$  data to test whether the current CLM4.5 and LPX-Bern implementation for  $\delta^{13}\text{C}$ , stomatal conductance, and photosynthesis as well as related CO<sub>2</sub> fertilization, nitrogen limitation, and water-use efficiency mechanisms are consistent with the tree-ring records. Simulated changes by LPX agree on average excellently with the tree-ring data (Fig. 7). LPX shows little change in the discrimination by C3 trees and the evolution of the average change in iWUE closely matches the tree-ring reconstruction. In contrast to the data, CLM4.5 results show a steadily decreasing trend in discrimination by C3 trees, roughly in parallel with rising CO<sub>2</sub> concentrations (Figs. 1, 7). The average decrease in discrimination by C3 trees for the grid cells with data amounts to about 1.5 ‰ by the end of the simulation, and the increase in iWUE is about 2 times the change indicated by the tree-ring data. The decrease in discrimination corresponds to a decrease in  $c_i/c_a$  (Eq. 4). In other words, the leaf internal partial pressure  $c_i$  is downregulated too strongly in CLM4.5, at least in the regions with tree-ring data.

Factorial simulations demonstrate that these overestimated trends are dominated by the response of CLM4.5 to increasing atmospheric CO<sub>2</sub>, and not by the response to changes in climate. Factorial and sensitivity simulations also show that differences in trends between CLM4.5 and LPX are not related to trends in soil moisture nor to (small) differences in the applied climate forcing data. The downregulation in  $c_i/c_a$  in CLM4.5 therefore does not reflect a response to drought or worsening climatic conditions for CO<sub>2</sub> assimilation. These findings suggest that the main reason for the model–model and model–tree-ring data difference in the trends of discrimination and iWUE is rooted in the parameterization of the photosynthesis–conductance coupling.

It is difficult to trace origins of data–model mismatch in complex models such as CLM4.5. There are two aspects in the current implementation of photosynthesis and conductance in CLM4.5 that may be problematic (Bonan et al., 2014; Ghimire et al., 2016). First, nitrogen downregulation of photosynthesis and conductance occurs on the subhourly model time step, although it is not plausible that leaf structures adjust so quickly. Second, the relationship between assimilation of carbon and transpiration of water (Ball et al., 1987) is prescribed with time-invariant and globally constant parameters.

Regarding nitrogen limitation, photosynthesis for isotopic discrimination is downregulated immediately, on the subhourly time step of the model, by limited nitrogen availability in CLM4.5 (Eq. 6). This can lead to a depression of assimilation in the isotope calculation during times of high assimilation. As explained in the method section, photosynthesis of carbon and stomatal conductance for water is computed, unlike for discrimination, without nitrogen limitation. Instead, the allocation of GPP to carbon pools is downreg-



ulated under nitrogen limitation. This downregulation is on annual average generally less than 20 % in forested regions, and 20th century changes in downregulation are generally small (within  $\pm 2$  %) in areas with tree-ring data.

Raczka et al. (2016) applied a recalibrated version of CLM4.5 at a single site (Niwot Ridge, US) in simulations with and without nitrogen limitation. These authors show that nitrogen downregulation strongly affects the change in average  $c_i/c_a$  over the 20th century. At their site, changes in  $c_i/c_a$  and in discrimination were positive over the industrial period and the century-scale change in discrimination was smaller when nitrogen limitation was not active. The observation-estimated seasonal cycle in discrimination at Niwot Ridge is better reproduced without nitrogen limitation than with limitation. Indeed, Raczka et al. (2016) suggest that downregulation of assimilation and  $c_i/c_a$  by nitrogen limitation (Eq. 6) may be too strong in CLM4.5. Ghimire et al. (2016) implemented an alternative formulation for nitrogen limitation in CLM4.5, where nitrogen availability affects the maximum rate of photosynthesis ( $V_{cmax}$ ) on slow timescales through changes in the leaf carbon-to-nitrogen ratio. This reduces the global bias in GPP, leaf area index, and biomass and improved water-use efficiency predictions compared to the original CLM4.5 formulation.

Another possibility for the model–data mismatch is that the photosynthesis formulation in CLM4.5 may not adequately represent the relationship between stomatal conductance and assimilation and related adjustment processes to long-term environmental changes. CLM4.5 employs the experimentally well-verified and widely used Ball–Berry equation (Eq. 7) applying globally uniform, time invariant slope parameters,  $m$ , for C3 and C4 plants. Thus, any potential adjustment of  $m$  to changes in environmental conditions, including the century-scale increase in atmospheric  $CO_2$  or changes in water stress are not considered. It is currently unclear whether such adjustment processes occur and the current understanding of the underlying physiological mechanisms of stomatal responses is incomplete (e.g. Miner et al., 2017). The value of  $m$  is set to nine in CLM4.5 for all C3 plants world-wide. This value is within the observational range, but species differences (e.g., evergreen versus deciduous) are neglected by using a single value. The review of Miner et al. (2017) yields mean values for  $m$  of 9.8, 8.7, and 6.8 for angiosperm evergreen, angiosperm deciduous and for gymnosperm trees, respectively (their Fig. 1). Aranibar et al. (2006) inferred values of  $m$  around 10 to 12 using observed foliar  $^{13}C$  values in pine.

Equations (7) and (6), defining the photosynthesis–conductance coupling are evaluated on the subhourly time step of the model and the variables  $A$ , RH,  $CO_2$ , and  $f_{dreg}$  vary daily and seasonally, while we investigate here decadal-to-century-scale trends. This hampers a simple interpretation of the two equations, in particular in terms of expected temporal changes in iWUE and whether expected century-scale changes in discrimination may be positive or negative. As

shown in Fig. 8, simulated changes in discrimination are positive in small areas of South America and southeastern Australia, and thus opposite to the world-wide trend simulated by CLM4.5.

Sato et al. (2015) investigated the influence of the use of vapor pressure deficit (VPD) versus relative humidity (RH) in Ball–Berry-type stomatal conductance formulations. About half of the investigated models apply RH as a driving variable (Eq. 7), despite the fact that VPD is considered the more relevant controlling factor. The global warming simulations reveal an increase in VPD and little change in RH. Their results suggest that the increase in VPD under global warming leads to a stronger downregulation of stomatal conductance ( $g_s$ ) and  $c_i/c_a$  for the VPD formulations compared to the RH formulation. This implies that replacing RH by VPD in the Ball–Berry equation in CLM4.5 may, without further adjustments, even increase the disagreement between modeled and reconstructed changes in discrimination and in iWUE.

Duarte et al. (2016) and Raczka et al. (2016) recalibrated CLM4.5 to match site-specific conditions in a conifer forest in the northwestern US and at Niwot Ridge, Colorado. These studies find a substantial 20th century increase in discrimination for their site-calibrated versions. One does expect from Eq. (7) that a change in the slope parameter  $m$  will result in a proportional change in the absolute magnitude of iWUE and a corresponding change in discrimination. Duarte et al. (2016) reduced  $m$  by a third in their single-site version. In turn, simulated discrimination was altered by about 2.5 %, roughly corresponding to the expected 33 % change in iWUE. In addition, the 20th century change in isotopic discrimination is reduced. In brief, model structure in CLM4.5 permits both positive and negative changes in discrimination under rising  $CO_2$ . The slope parameter  $m$ , potentially affecting trends in discrimination, is set as time invariant and globally uniform for all C3 plants. The relationship between  $A$  and  $g_s$  is assumed to be linear for constant  $CO_2$  and relative humidity.

In LPX, the shape of the relationship between  $g$  and  $A$  is not as tightly prescribed as in CLM4.5. Rather,  $A$  and  $c_i/c_a$  are optimized for given environmental conditions as described in the method section. This optimization leads to small 20th century changes in simulated isotopic discrimination in agreement with the observational evidence. The parameterization used in LPX is for the daily model time step and may not be readily transferred to models with a sub-hourly time step.

Alternative conductance–photosynthesis formulations may be preferable, compared to the Ball–Berry relation as used in CLM4.5. The Ball–Berry relation is viewed as consistent with an optimization (Cowan and Farquhar, 1977) of stomatal conductance towards maintaining a constant water-use efficiency by optimizing carbon gain per unit water loss. However, a number of alternative formulations are found in the literature. These differ in potentially

important ways. For example, Medlyn et al. (2011) suggest that the slope parameter increases with increasing temperature; further, the inverse of the square root of vapor pressure deficit is used instead of relative humidity in their relationship. Prentice et al. (2014) and Wang et al. (2016) rely on an optimality hypothesis considering the costs of maintaining both water flow and photosynthetic capacity. These authors use information on the spatial gradients in  $\delta^{13}\text{C}$  from stable isotope measurements on leaf material (Cornwell et al., 2016) to develop their photosynthesis–conductance relation. The slope parameter proposed by Prentice et al. (2014) depends on a number of variables, e.g., the temperature-dependent Michaelis–Menten coefficient for Rubisco-limited photosynthesis, viscosity of water, or the water potential difference between soil and leaf or foliage height. Hence, the slope parameter varies with environmental conditions in this approach. Bonan et al. (2014) implemented different photosynthesis–conductance modules within a CLM4.5 model version featuring a multilayer canopy and compared results with leaf analyses and eddy covariance fluxes at six forest sites. The continuous soil–plant–atmosphere module, optimizing carbon gain per unit water loss and considering hydraulic safety, performs similarly to or better than the Ball–Berry formulations used in CLM4.5. A better performance is achieved under soil-moisture-stressed conditions in particular.

It is a task for the future to explore whether the implementation of such optimizing modules will lead to a more realistic simulation of the spatiotemporal changes in isotopic discrimination. Taken together, agreement between CLM-modeled and observational trends in discrimination may be improved in the future by adjusting model parameters such as the slope parameter  $m$ , replacing formulations for nitrogen limitation, e.g., following Ghimire et al. (2016), and by implementing photosynthesis–conductance routines that adhere to an optimization principle as proposed in the literature (Bonan et al., 2014; Prentice et al., 2014).

#### 4.4 Consistency with previous studies

The small changes in discrimination, an increase in iWUE proportional to the atmospheric  $\text{CO}_2$  increase, and approximately constant  $c_i/c_a$  over the 20th century as reconstructed by our tree-ring compilation and simulated by LPX-Bern is consistent with most, but not all, studies. As reported by Voelker et al. (2016), studies that are consistent with the notion of constant  $c_i/c_a$  include early work by Wong et al. (1979) measuring  $A$  and  $g$  of leaves in a chamber, and a range of tree-ring  $\delta^{13}\text{C}$  studies (Saurer et al., 2004; Ward et al., 2005; Bonal et al., 2011; Franks et al., 2013), as well as a metaanalysis of FACE experiments (Ainsworth and Long, 2005). The European  $\delta^{13}\text{C}$  tree-ring records analyzed by Frank et al. (2015) and Saurer et al. (2014) also point to a moderate control towards a constant  $c_i/c_a$  ratio. Leonardi et al. (2012) conclude that the temporal variation in  $\delta^{13}\text{C}$

in their long-term isotope tree-ring chronologies for 53 sites worldwide supports the hypothesis of an active plant mechanism that maintains a constant ratio between intercellular and ambient  $\text{CO}_2$  concentrations. Lévesque et al. (2014) reported, from their  $\delta^{13}\text{C}$  tree-ring data, an increase in iWUE over the last 50 years in the range of 8 to 29 % for xeric and mesic sites in the Alps and Switzerland. At their sites, drought-induced stomatal closure has reduced transpiration at the cost of reduced carbon uptake and growth. Churakova (Sidorova) report different iWUE strategies with almost constant  $c_i/c_a$  for European larch since the 1990s and continuously increasing iWUE for mountain pine trees since the 1980s in the Swiss National Park. Liu et al. (2014a) find moderate changes in  $c_i/c_a$  and an increase in iWUE by 36 % in a riparian forest in northwestern China from 1920 to 2012. Similarly, Peñuelas et al. (2011), analyzing changes in tree-ring  $\delta^{13}\text{C}$  and growth at 47 sites worldwide, inferred little change in discrimination,  $c_i/c_a$ , and an increase in iWUE of 20.5 % from 1960 to 2000. Out of 35 studies with growth data, 18 show an increase in growth with time, while the others show no growth changes or negative growth changes. Voelker et al. (2016) analyzed studies of  $\delta^{13}\text{C}$  and photosynthetic discrimination in woody angiosperms and gymnosperms that grew across a range of  $\text{CO}_2$  spanning at least 100 ppm and combining paleodata, tree-ring records, and FACE-type experiments. They conclude that woody plants respond to increasing  $\text{CO}_2$  by regulating leaf gas exchange along a continuum of  $c_a - c_i$  and  $c_i/c_a$  that minimizes water loss for a given amount of C gain and therefore increasingly minimizes the likelihood of exposure to drought stress. Summarizing 5 years of results from the Basel FACE experiment, Klein et al. (2016) find that iWUE increased in their experiment by 38 % at the needle level, as a result of higher assimilation at constant conductance. Interestingly, Klein et al. (2016) could not identify an increase in plant carbon stocks corresponding to the increase in assimilation, and the fate of the additionally assimilated carbon remains unclear. The 38 % increase in iWUE is comparable to the increase from ambient (400 ppm) to elevated (550 ppm)  $\text{CO}_2$  concentrations and in line with observations reported by De Kauwe et al. (2013) as well as a metaanalysis of FACE experiments (Ainsworth and Long, 2005). Streit et al. (2014) measured needle gas exchange and analyzed  $\delta^{13}\text{C}$  of needles and tree rings of *Larix decidua* and *Pinus mugo* after 9 years of free air  $\text{CO}_2$  enrichment. Both species showed an increase in net photosynthesis and, in agreement with Keel et al. (2006), small changes or no changes in conductance under elevated  $\text{CO}_2$  and a change in iWUE roughly in proportion to the increase in  $\text{CO}_2$ . Elevated  $\text{CO}_2$  induced increased basal area growth in *L. decidua*, but not in *P. mugo*. Neither nitrogen limitation, end-product limitation, nor, in agreement with other FACE studies (Bader et al., 2010; Liberloo et al., 2007), downregulation of maximal photosynthetic rate was found.

In contrast, Battipaglia et al. (2013) report an increase in iWUE between 50 and 90 % for the ORNL, DUKE, and

POP-EUROFACE Face sites and that  $c_i$  was likely maintained constant and  $^{13}\text{C}$  discrimination reduced under elevated  $\text{CO}_2$ . We note that this finding, based on  $^{13}\text{C}$  tree-ring isotope measurements, differs remarkably from results by De Kauwe et al. (2013). De Kauwe et al. (2013) suggest a proportional increase in  $i\text{WUE}$  at the Duke and ORNL FACE sites based on in situ foliage gas-exchange measurements (see their Fig. 6). This difference might be caused by the comparison of leaf-level gas-exchange and stem-level data. Integration times may differ between the two data streams and stem level data are influenced by growth rate and storage compounds. A scenario of constant  $c_i$  under increasing  $\text{CO}_2$  concentrations is also suggested by Keenan et al. (2013), who report a strong increase in water-use efficiency summarizing results from eddy-covariance measurements at about 20 temperate and boreal forest sites in the Northern Hemisphere. However, these studies may be affected by local conditions which are not representative for larger scales and may also be influenced by temporal sampling biases, as the record length of FACE and eddy-covariance measurements is limited. Indeed, the individual tree-ring records in Fig. 7 show considerable site-to-site variability as well as decadal variability. In addition, factors other than  $c_i/c_a$ , e.g., vapor pressure deficit, may influence trends at eddy covariance sites (Knauer et al., 2017). The suggestion of a constant  $c_i$  under increasing  $\text{CO}_2$  is challenged by Knauer et al. (2017). These authors find that the ecosystem trends reported by Keenan et al. (2013) and a scenario of a constant  $c_i$ , as also suggested by Battipaglia et al. (2013), are in conflict with observed large-scale trends in continental discharge, evapotranspiration, and the seasonal  $\text{CO}_2$  exchange. Rather, the comparison of observational data and model outcome by Knauer et al. (2017) support the finding of a physiological regulation towards a constant  $c_i/c_a$  under rising atmospheric  $\text{CO}_2$ .

## 5 Conclusions

We compiled 20th century  $\delta^{13}\text{C}$  tree-ring records for 73 sites (Table A1). The records are used to reconstruct changes in the ratio of  $\text{CO}_2$  concentration within the stomatal cavity of C3 trees and the atmosphere,  $c_i/c_a$ , and to reconstruct changes in the intrinsic water-use efficiency,  $i\text{WUE}$ , denoting the ratio of photosynthesis to conductance ( $A/g$ ). The tree-ring results suggest, on average, constant  $c_i/c_a$  over the 20th century and  $i\text{WUE}$  to have increased in proportion to atmospheric  $\text{CO}_2$ . The simulated changes in discrimination,  $c_i/c_a$ , and  $i\text{WUE}$  are consistent with the reconstructions for LPX-Bern 1.3, whereas CLM4.5 shows larger trends and overestimates 20th century changes in  $i\text{WUE}$  by almost a factor of 2 (Fig. 7). This suggests that it is desirable to adjust the implementation of photosynthesis and conductance in CLM4.5 towards a better agreement with observation-derived century-scale trends in  $^{13}\text{C}$  discrimination and intrinsic water-use efficiency. In conclusion, this study demonstrates that existing information on the magnitude and trends of stable carbon isotopes permits the evaluation of global land carbon cycle models. In particular,  $\delta^{13}\text{C}$  data provide insight into the fundamental relationship between carbon assimilation and stomatal conductance controlling the flow of  $\text{CO}_2$  and water. Tree-ring records are useful as they retrospectively cover decadal-to-century timescales which are not accessible by laboratory or field experiments and the relevant instrumental records, and which are directly relevant for the response of plants to the decadal-to-century-scale rise in  $\text{CO}_2$  and to global warming.

*Data availability.* Model output data and the averaged tree ring data shown in Fig. 7 are available at: [http://www.climate.unibe.ch/research/publications/datasets/index\\_eng.html](http://www.climate.unibe.ch/research/publications/datasets/index_eng.html). Additional model data are available on request.

## Appendix A

Table A1.  $\delta^{13}\text{C}$  tree-ring time series compiled for this study.

#	Site	Country	Period	Lat	Lon	Reference
1	Dachstein	Austria	1900–1996	47.28	13.36	Saurer et al. (2014)
2	Lainzer Tiergarten	Austria	1900–2003	48.18	16.20	Treydte et al. (2007)
3	Pöllau	Austria	1900–2002	47.95	16.06	Treydte et al. (2007)
4	Columbia	Canada	1900–1990	52.50	−118.00	Edwards et al. (2008)
5	Bromarv	Finland	1901–2002	60.00	23.08	Treydte et al. (2007)
6	Ilomantsi	Finland	1900–2002	62.98	30.98	Treydte et al. (2007)
7	Kessi/Inari	Finland	1900–2002	68.93	28.42	Treydte et al. (2007)
8	Laanila	Finland	1900–2002	68.50	27.50	Gagen et al. (2011)
9	Turku	Finland	1900–1994	60.41	22.17	Robertson et al. (1997)
10	Fontainebleau	France	1900–2000	48.38	2.67	Treydte et al. (2007)
11	Rennes	France	1900–1999	48.25	−1.70	Treydte et al. (2007)
12	Dransfeld	Germany	1900–2002	51.50	9.78	Treydte et al. (2007)
13	Franconia	Germany	1900–2005	49.15	11.00	Saurer et al. (2014)
14	Monte Cimino	Italy	1900–2005	42.41	12.20	Klesse et al. in prep
15	Serra di Crispo	Italy	1900–2003	39.93	16.20	Treydte et al. (2007)
16	Trento	Italy	1900–2004	45.98	11.66	Saurer et al. (2014)
17	Panemunės Silas	Lithuania	1900–2002	54.88	23.97	Treydte et al. (2007)
18	Col Du Zad	Morocco	1900–2000	32.97	−5.07	Treydte et al. (2007)
19	Forfjorddalen	Norway	1900–2001	68.79	15.72	Young et al. (2012)
20	Gutulia	Norway	1900–2003	62.00	12.18	Treydte et al. (2007)
21	Bagrot	Pakistan	1900–1998	35.90	74.93	Treydte et al. (2006)
22	Boibar	Pakistan	1900–1998	36.62	74.98	Treydte et al. (2006)
23	Puerto Maldonado	Peru	1900–2004	−12.60	−69.20	Ballantyne et al. (2011)
24	Niopolimice Gibiel	Poland	1900–2003	50.12	20.38	Treydte et al. (2007)
25	Niopolimice Gibiel	Poland	1900–2003	50.12	20.38	Treydte et al. (2007)
26	Suwałki	Poland	1900–2003	54.10	22.93	Treydte et al. (2007)
27	Cucuraena	Romania	1900–2005	47.40	25.08	Klesse et al. in prep
28	Giumalau	Romania	1900–2005	47.45	25.45	Klesse et al. in prep
29	Altai	Russia	1900–2005	50.23	89.04	Sidorova et al. (2012)
30	Indigirka	Russia	1900–2004	70.00	148.00	Sidorova et al. (2008)
31	Khakasiya	Russia	1900–2005	54.41	89.96	Knorre et al. (2010)
32	Khibiny	Russia	1900–2005	67.41	33.15	Saurer et al. (2014)
33	Taymyr	Russia	1900–2005	72.00	102.00	Sidorova et al. (2010)
34	Tura	Russia	1900–2005	62.32	100.14	Sidorova et al. (2009)
35	Hlinna Dolina1	Slovakia	1900–2005	49.19	19.90	Weigt et al. in prep
36	Hlinna Dolina2	Slovakia	1900–2005	49.19	19.90	Weigt et al. (2017)
37	Veza	Slovenia	1907–2005	46.37	13.69	Saurer et al. (2014)
38	Pafuri	South Africa	1900–2005	−22.70	31.25	Woodborne et al. (2015)
39	Cazorla	Spain	1900–2005	37.81	−2.96	Treydte et al. (2007)
40	Pinar de Lillo	Spain	1900–2002	43.07	−5.25	Treydte et al. (2007)
41	Pedraforca	Spain	1900–2005	42.24	1.70	Treydte et al. (2007)
42	Furubergget	Sweden	1900–2005	63.16	13.50	Saurer et al. (2014)
43	Tornetråsk	Sweden	1900–2005	68.22	19.72	Loader et al. (2013)
44	Bettlachstock	Switzerland	1900–1995	47.22	7.42	Saurer et al. (2000, 2012)
45	Caverigno	Switzerland	1900–2003	46.35	8.60	Treydte et al. (2007)
46	Davos north	Switzerland	1900–2005	46.82	9.86	Klesse et al. in prep
47	Lägern B	Switzerland	1900–2005	47.48	8.36	Klesse et al. (2017)
48	Lötschental	Switzerland	1900–2004	46.43	7.80	Saurer et al. (2014)
49	Lötschental N19	Switzerland	1900–2005	46.39	7.77	Klesse et al. (2017)
50	Salvenach	Switzerland	1900–2005	46.91	7.15	Kimak and Leuenberger (2015)
51	Swiss National Park	Switzerland	1900–2005	46.00	10.00	Churakova (Sidorova)

Table A1. Continued.

#	Site	Country	Period	Lat	Lon	Reference
52	Vigera	Switzerland	1900–2003	46.50	8.77	Treydte et al. (2007)
53	Elmali	Turkey	1900–2005	36.60	30.02	Saurer et al. (2014)
54	Lochwood	UK	1900–2003	55.27	−3.43	Saurer et al. (2014)
55	Sandringham	UK	1900–1994	52.83	0.50	Saurer et al. (2014)
56	Southern Upl.	UK	1907–2005	57.10	−5.43	Saurer et al. (2014)
57	Windsor	UK	1900–2003	51.41	−0.59	Treydte et al. (2007)
58	Woburn	UK	1900–2003	51.98	−0.59	Treydte et al. (2007)
59	Alton	USA	1900–1984	37.44	−112.49	Leavitt et al. (2007)
60	Aztec	USA	1900–1984	37.00	−107.82	Leavitt et al. (2007)
61	Blanco	USA	1900–2005	37.45	−118.17	Bale et al. (2011)
62	Cerro Colorado	USA	1900–1984	35.28	−107.72	Leavitt et al. (2007)
63	Dry Canyon	USA	1900–1984	37.58	−108.55	Leavitt et al. (2007)
64	Gate Canyon	USA	1900–1984	39.88	−110.23	Leavitt et al. (2007)
65	Hawthorne	USA	1900–1984	38.43	−118.75	Leavitt et al. (2007)
66	Kane Springs	USA	1900–1984	37.52	−109.90	Leavitt et al. (2007)
67	Lamoille	USA	1900–1984	40.69	−115.47	Leavitt et al. (2007)
68	Lower Colonias	USA	1900–1984	35.56	−105.55	Leavitt et al. (2007)
69	Mimbres	USA	1900–1984	33.00	−107.93	Leavitt et al. (2007)
70	NE AZ	USA	1900–1984	34.08	−109.35	Leavitt et al. (2007)
71	NC AZ	USA	1900–1984	34.83	−111.98	Leavitt et al. (2007)
72	Owl Canyon	USA	1900–1984	40.79	−105.18	Leavitt et al. (2007)
73	Ozena	USA	1900–1984	34.72	−119.24	Leavitt et al. (2007)

*Competing interests.* The authors declare that they have no conflict of interest.

*Acknowledgements.* We thank B. Otto-Bliesner and E. Brady for supporting this and the work of the CESM isotope group and for hosting Fortunat Joos during visits at NCAR. We thank A. Ballantyne and an anonymous reviewer for constructive comments. The research leading to these results was supported through Swiss National Science Foundation (SNF) projects 200020\_147174, 20020\_159563, and CRSII3\_136295 (Sinergia Project iTREE). Olga V. Churakova acknowledges support by Marie Curie IIF (EU-ISOTREC 235122), the Marie Heim-Vögtlin Program (MHV PMPDP2\_145507), and Era.Net RUSplus project ELVECS (SNF project number: IZRPZ0\_164735). William J. Riley and Charles D. Koven were supported by the Director, Office of Science, Office of Biological and Environmental Research of the US Department of Energy under contract no. DE-AC02-05CH11231 as part of their Regional and Global Climate Modeling program. Simulations with CLM4.5 were carried out at the Swiss National Supercomputing Centre in Lugano, Switzerland.

Edited by: S. Zaehle

Reviewed by: A. P. Ballantyne and one anonymous referee

## References

- Ainsworth, E. A. and Long, S. P.: What have we learned from 15 years of free-air CO<sub>2</sub> enrichment (FACE)? A meta-analytic review of the responses of photosynthesis, canopy properties and plant production to rising CO<sub>2</sub>, *New Phytol.*, 165, 351–372, doi:10.1111/j.1469-8137.2004.01224.x, 2005.
- Anav, A., Friedlingstein, P., Kidston, M., Bopp, L., Ciais, P., Cox, P., Jones, C., Jung, M., Myneni, R., and Zhu, Z.: Evaluating the land and ocean components of the global carbon cycle in the CMIP5 Earth System Models, *J. Climate*, 26, 6801–6843, 2013.
- Aranibar, J. N., Berry, J. A., Riley, W. J., Pataki, D. E., Law, B. E., and Ehleringer, J. R.: Combining meteorology, eddy fluxes, isotope measurements, and modeling to understand environmental controls of carbon isotope discrimination at the canopy scale, *Glob. Change Biol.*, 12, 710–730, doi:10.1111/j.1365-2486.2006.01121.x, 2006.
- Bader, M. K.-F., Siegwolf, R., and Körner, C.: Sustained enhancement of photosynthesis in mature deciduous forest trees after 8 years of free air CO<sub>2</sub> enrichment, *Planta*, 232, 1115–1125, doi:10.1007/s00425-010-1240-8, 2010.
- Bale, R. J., Robertson, I., Salzer, M. W., Loader, N. J., Leavitt, S. W., Gagen, M., Harlan, T. P., and McCarroll, D.: An annually resolved bristlecone pine carbon isotope chronology for the last millennium, *Quaternary Res.*, 76, 22–29, doi:10.1016/j.yqres.2011.05.004, 2011.
- Ball, J. T., Woodrow, I. E., and Berry, J. A.: A model predicting stomatal conductance and its contribution to the control of photosynthesis under different environmental conditions, in: *Progress in Photosynthesis Research*. Vol. 4, Proceedings of the 7th International Congress on Photosynthesis, 221–224, Nijhoff Publishers, Dordrecht, the Netherlands, 1987.
- Ballantyne, A. P., Baker, P. A., Chambers, J. Q., Villalba, R., and Argollo, J.: Regional differences in South American monsoon precipitation inferred from the growth and isotopic composition of tropical trees, *Earth Interact.*, 15, 1–35, doi:10.1175/2010EI277.1, 2011.
- Battipaglia, G., Saurer, M., Cherubini, P., Calfapietra, C., McCarthy, H. R., Norby, R. J., and Francesca Cotrufo, M.: Elevated CO<sub>2</sub> increases tree-level intrinsic water use efficiency: insights from carbon and oxygen isotope analyses in tree rings across three forest FACE sites, *New Phytol.*, 197, 544–554, doi:10.1111/nph.12044, 2013.
- Bauska, T. K., Joos, F., Mix, A. C., Roth, R., Ahn, J., and Brook, E. J.: Links between atmospheric carbon dioxide, the land carbon reservoir and climate over the past millennium, *Nat. Geosci.*, 8, 383–387, 2015.
- Becker, M., Andersen, N., Erlenkeuser, H., Humphreys, M. P., Tanhua, T., and Körtzinger, A.: An internally consistent dataset of  $\delta^{13}\text{C}$ -DIC in the North Atlantic Ocean – NAC13v1, *Earth Syst. Sci. Data*, 8, 559–570, doi:10.5194/essd-8-559-2016, 2016.
- Bonal, D., Ponton, S., Le Thiec, D., Richard, B., Ningre, N., Hérault, B., Ogée, J., Gonzalez, S., Pignat, M., Sabatier, D., and Guehl, J.-M.: Leaf functional response to increasing atmospheric CO<sub>2</sub> concentrations over the last century in two northern Amazonian tree species: a historical  $\delta^{13}\text{C}$  and  $\delta^{18}\text{O}$  approach using herbarium samples, *Plant Cell Environ.*, 34, 1332–1344, 2011.
- Bonan, G. B., Williams, M., Fisher, R. A., and Oleson, K. W.: Modeling stomatal conductance in the earth system: linking leaf water-use efficiency and water transport along the soil–plant–atmosphere continuum, *Geosci. Model Dev.*, 7, 2193–2222, doi:10.5194/gmd-7-2193-2014, 2014.
- Bowling, D. R., Ballantyne, A. P., Miller, J. B., Burns, S. P., Conway, T. J., Menzer, O., Stephens, B. B., and Vaughn, B. H.: Ecological processes dominate the  $^{13}\text{C}$  land disequilibrium in a Rocky Mountain subalpine forest, *Global Biogeochem. Cy.*, 28, 352–370, doi:10.1002/2013GB004686, 2014.
- Brüggemann, N., Gessler, A., Kayler, Z., Keel, S. G., Badeck, F., Barthel, M., Boeckx, P., Buchmann, N., Brugnoli, E., Esper-schütz, J., Gavrichkova, O., Ghashghaie, J., Gomez-Casanovas, N., Keitel, C., Knohl, A., Kuptz, D., Palacio, S., Salmon, Y., Uchida, Y., and Bahn, M.: Carbon allocation and carbon isotope fluxes in the plant-soil-atmosphere continuum: a review, *Biogeosciences*, 8, 3457–3489, doi:10.5194/bg-8-3457-2011, 2011.
- Carvallhais, N., Forkel, M., Khomik, M., Bellarby, J., Jung, M., Migliavacca, M., Mu, M., Saatchi, S., Santoro, M., Thurner, M., Weber, U., Ahrens, B., Beer, C., Cescatti, A., Randerson, J. T., and Reichstein, M.: Global covariation of carbon turnover times with climate in terrestrial ecosystems, *Nature*, 514, 213–217, doi:10.1038/nature13731, 2014.
- Churakova (Sidorova), O. V., Eugster, W., Zielis, S., Cherubini, P., Etzold, S., Saurer, M., Siegwolf, R., and Buchmann, N.: Increasing relevance of spring temperatures for Norway spruce trees in Davos, Switzerland, after the 1950s, *Trees*, 28, 183–191, doi:10.1007/s00468-013-0941-6, 2014.
- Churakova (Sidorova), O. V., Saurer, M., Bryukhanova, M. V., Siegwolf, R. T., and Bigler, C.: Site-specific water-use strategies of mountain pine and larch to cope with recent climate change, *Tree Physiol.*, 36, 942–953, doi:10.1093/treephys/tpw060, 2016a.
- Churakova (Sidorova), O. V., Shashkin, A. V., Siegwolf, R. T., Spahni, R., Launois, T., Saurer, M., Bryukhanova, M. V.,

- Benkova, A. V., Kuptsova, A. V., Peylin, P., Vaganov, E. A., Masson-Delmotte, V., and Roden, J.: Application of eco-physiological models to the climatic interpretation of  $\delta^{13}\text{C}$  and  $\delta^{18}\text{O}$  measured in Siberian larch tree-rings, *Dendrochronologia*, 39, 51–59, 2016b.
- Ciais, P., Tans, P. P., White, J. W. C., Trolier, M., Francey, R. J., Berry, J. A., Randall, D. R., Sellers, P. J., Collatz, J. G., and Schimel, D. S.: Partitioning of ocean and land uptake of  $\text{CO}_2$  as inferred by  $\delta^{13}\text{C}$  measurements from the NOAA Climate Monitoring and Diagnostics Laboratory Global Air Sampling Network, *J. Geophys. Res.-Atmos.*, 100, 5051–5070, doi:10.1029/94JD02847, 1995.
- Ciais, P., Tagliabue, A., Cuntz, M., Bopp, L., Scholze, M., Hoffmann, G., Lourantou, A., Harrison, S. P., Prentice, I. C., Kelley, D. I., Koven, C., and Piao, S. L.: Large inert carbon pool in the terrestrial biosphere during the Last Glacial Maximum, *Nat. Geosci.*, 5, 74–79, doi:10.1038/ngeo1324, 2012.
- Ciais, P., Sabine, C., Bala, G., Bopp, L., Brovkin, V., Canadell, J., Chhabra, A., DeFries, R., Galloway, J., Heimann, M., Jones, C., Quéré, C. L., Myneni, R., Piao, S., and Thornton, P.: Carbon and other biogeochemical cycles, in: *Climate Change 2013: The Physical Science Basis. Contribution of Working Group I to the Fifth Assessment Report of the Intergovernmental Panel on Climate Change*, edited by: Stocker, T. F., Qin, D., Plattner, G.-K., Tignor, M., Allen, S. K., Boschung, J., Nauels, A., Xia, Y., Bex, V., and Midgley, P. M., Cambridge University Press, Cambridge, UK and New York, NY, USA, 2013.
- Collatz, G., Ball, J., Grivet, C., and Berry, J. A.: Physiological and environmental regulation of stomatal conductance, photosynthesis and transpiration: a model that includes a laminar boundary layer, *Agr. Forest Meteorol.*, 54, 107–136, 1991.
- Collatz, G., Ribas-Carbo, M., and Berry, J.: Coupled photosynthesis-stomatal conductance model for leaves of C4 plants, *Aust. J. Plant Physiol.*, 19, 519–538, 1992.
- Cornwell, W., Wright, I., Turner, J., Maire, V., Barbour, M., Cernusak, L., Dawson, T., Ellsworth, D., Farquhar, G., Griffiths, H., Keitel, C., Knohl, A., Reich, P., Williams, D., Bhaskar, R., Cornelissen, J., Richards, A., Schmidt, S., Valladares, F., Körner, C., Schulze, E., Buchmann, N., and Santiago, L.: A global dataset of leaf  $\Delta^{13}\text{C}$  values, Dryad Digital Repository, <http://hdl.handle.net/11858/00-001M-0000-0029-7FF3-7>, in press, 2016.
- Cowan, I. R. and Farquhar, G.: Stomatal function in relation to leaf metabolism and environment, in: *Integration of Activity in the Higher Plant*, edited by: Jennings, D. H., 471–505, Cambridge University Press, Cambridge, 1977.
- Danis, P.-A., Hatté, L., Misson, L., and Guiot, J.: MAIDENiso: a multiproxy biophysical model of tree-ring width and oxygen and carbon isotopes, *Can. J. Forest Res.*, 42, 1697–1713, doi:10.1139/x2012-089, 2012.
- De Kauwe, M. G., Medlyn, B. E., Zaehle, S., Walker, A. P., Dietze, M. C., Hickler, T., Jain, A. K., Luo, Y., Parton, W. J., Prentice, I. C., Smith, B., Thornton, P. E., Wang, S., Wang, Y.-P., Wärlind, D., Weng, E., Crous, K. Y., Ellsworth, D. S., Hanson, P. J., Kim, H.-S., Warren, J. M., Oren, R., and Norby, R. J.: Forest water use and water use efficiency at elevated  $\text{CO}_2$ : a model–data inter-comparison at two contrasting temperate forest FACE sites, *Glob. Change Biol.*, 19, 1759–1779, doi:10.1111/gcb.12164, 2013.
- Duarte, H. F., Raczka, B. M., Ricciuto, D. M., Lin, J. C., Koven, C. D., Thornton, P. E., Bowling, D. R., Lai, C.-T., Bible, K. J., and Ehleringer, J. R.: Evaluating the Community Land Model (CLM 4.5) at a Coniferous Forest Site in Northwestern United States Using Flux and Carbon-Isotope Measurements, *Biogeosciences Discuss.*, doi:10.5194/bg-2016-441, in review, 2016.
- Edwards, T. W., Birks, S. J., Luckman, B. H., and MacDonald, G. M.: Climatic and hydrologic variability during the past millennium in the eastern Rocky Mountains and northern Great Plains of western Canada, *Quaternary Res.*, 70, 188–197, 2008.
- Eggleston, S., Schmitt, J., Bereiter, B., Schneider, R., and Fischer, H.: Evolution of the stable carbon isotope composition of atmospheric  $\text{CO}_2$  over the last glacial cycle, *Paleoceanography*, 31, 434–452, doi:10.1002/2015PA002874, 2016.
- Etheridge, D. M., Steele, L. P., Langenfelds, R. L., Francey, R. J., Barnola, J.-M., and Morgan, V. I.: Natural and anthropogenic changes in atmospheric  $\text{CO}_2$  over the last 1000 years from air in Antarctic ice and firn, *J. Geophys. Res.*, 101, 4115–4128, doi:10.1029/95JD03410, 1996.
- Farquhar, G., O’Leary, M., and Berry, J.: On the relationship between carbon isotope discrimination and the intercellular carbon dioxide concentration in leaves, *Funct. Plant Biol.*, 9, 121–137, 1982.
- Farquhar, G. D., von Caemmerer, S., and Berry, J. A.: A biochemical model of photosynthetic  $\text{CO}_2$  assimilation in leaves of C3 species, *Planta*, 149, 78–90, doi:10.1007/BF00386231, 1980.
- Farquhar, G. D., Ehleringer, J. R., and Hubick, K. T.: Carbon isotope discrimination and photosynthesis, *Annu. Rev. Plant Phys.*, 40, 503–537, doi:10.1146/annurev.pp.40.060189.002443, 1989.
- Fichtler, E., Helle, G., and Worbes, M.: Stable-carbon isotope time series from tropical tree rings indicate a precipitation signal, *Tree-Ring Res.*, 66, 35–49, doi:10.3959/2008-20.1, 2010.
- Foereid, B., Ward, D. S., Mahowald, N., Paterson, E., and Lehmann, J.: The sensitivity of carbon turnover in the Community Land Model to modified assumptions about soil processes, *Earth Syst. Dynam.*, 5, 211–221, doi:10.5194/esd-5-211-2014, 2014.
- Francey, R. J., Allison, C. E., Etheridge, D. M., Trudinger, C. M., Enting, I. G., Leuenberger, M., Langenfelds, R. L., Michel, E., and Steele, L. P.: A 1000-year high precision record of  $\delta^{13}\text{C}$  in atmospheric  $\text{CO}_2$ , *Tellus B*, 51, 170–193, doi:10.1034/j.1600-0889.1999.t01-1-00005.x, 1999.
- Frank, D. C., Poulter, B., Saurer, M., Esper, J., Huntingford, C., Helle, G., Treydte, K., Zimmermann, N. E., Schleser, G. H., Ahlstrom, A., Ciais, P., Friedlingstein, P., Levis, S., Lomas, M., Sitch, S., Viovy, N., Andreu-Hayles, L., Bednarz, Z., Berninger, F., Boettger, T., D’Alessandro, C. M., Daux, V., Filot, M., Grabner, M., Gutierrez, E., Haupt, M., Hiltunen, E., Jungner, H., Kalela-Brundin, M., Krapiec, M., Leuenberger, M., Loader, N. J., Marah, H., Masson-Delmotte, V., Pazdur, A., Pawelczyk, S., Pierre, M., Planells, O., Pukiene, R., Reynolds-Henne, C. E., Rinne, K. T., Saracino, A., Sonninen, E., Stievenard, M., Switsur, V. R., Szczepanek, M., Szychowska-Krapiec, E., Todaro, L., Waterhouse, J. S., and Weigl, M.: Water-use efficiency and transpiration across European forests during the Anthropocene, *Nature Climate Change*, 5, 579–583, 2015.
- Franks, P. J., Adams, M. A., Amthor, J. S., Barbour, M. M., Berry, J. A., Ellsworth, D. S., Farquhar, G. D., Ghannoum, O., Lloyd, J., McDowell, N., Norby, R. J., Tissue, D. T., and von Caemmerer, S.: Sensitivity of plants to changing atmospheric  $\text{CO}_2$  concentration: from the geological past to the next century, *New Phytol.*, 197, 1077–1094, 2013.

- Gagen, M., Zorita, E., McCarroll, D., Young, G. H. F., Grudd, H., Jalkanen, R., Loader, N. J., Robertson, I., and Kirchhefer, A.: Cloud response to summer temperatures in Fennoscandia over the last thousand years, *Geophys. Res. Lett.*, 38, L05701, doi:10.1029/2010GL046216, 2011.
- Gerber, S., Joos, F., and Prentice, I.: Sensitivity of a dynamic global vegetation model to climate and atmospheric CO<sub>2</sub>, *Glob. Change Biol.*, 10, 1223–1239, 2004.
- Ghimire, B., Riley, W. J., Koven, C. D., Mu, M., and Rander-son, J. T.: Representing leaf and root physiological traits in CLM improves global carbon and nitrogen cycling predictions, *Journal of Advances in Modeling Earth Systems*, 8, 598–613, doi:10.1002/2015MS000538, 2016.
- Gobron, N., Pinty, B., Aussedat, O., Chen, J. M., Cohen, W. B., Fensholt, R., Gond, V., Huemmrich, K. F., Lavergne, T., Méline, F., Privette, J. L., Sandholt, I., Taberner, M., Turner, D. P., Verstraete, M. M., and Widlowski, J.-L.: Evaluation of fraction of absorbed photosynthetically active radiation products for different canopy radiation transfer regimes: Methodology and results using Joint Research Center products derived from SeaWiFS against ground-based estimations, *J. Geophys. Res.-Atmos.*, 111, D13110, doi:10.1029/2005JD006511, 2006.
- Gruber, N., Keeling, C. D., Bacastow, R. B., Guenther, P. R., Lueker, T. J., Wahlen, M., Meijer, H. A. J., Mook, W. G., and Stocker, T. F.: Spatiotemporal patterns of carbon-13 in the global surface oceans and the oceanic suess effect, *Global Biogeochem. Cy.*, 13, 307–335, doi:10.1029/1999GB900019, 1999.
- Harris, I., Jones, P., Osborn, T., and Lister, D.: Updated high-resolution grids of monthly climatic observations – the CRU TS3.10 Dataset, *Int. J. Climatol.*, 34, 623–642, doi:10.1002/joc.3711, 2014.
- Hartl-Meier, C., Zang, C., Büntgen, U., Esper, J., Rothe, A., Göttelein, A., Dirnböck, T., and Treydte, K.: Uniform climate sensitivity in tree-ring stable isotopes across species and sites in a mid-latitude temperate forest, *Tree Physiol.*, 35, 4–15, doi:10.1093/treephys/tpu096, 2015.
- Haxeltine, A. and Prentice, I. C.: A general model for the light-use efficiency of primary production, *Funct. Ecol.*, 10, 551–561, 1996a.
- Haxeltine, A. and Prentice, I. C.: BIOME3: An equilibrium terrestrial biosphere model based on ecophysiological constraints, resource availability, and competition among plant functional types, *Global Biogeochem. Cy.*, 10, 693–709, doi:10.1029/96GB02344, 1996b.
- Heimann, M. and Maier-Reimer, E.: On the relations between the oceanic uptake of CO<sub>2</sub> and its carbon isotopes, *Global Biogeochem. Cy.*, 10, 89–110, doi:10.1029/95GB03191, 1996.
- Holden, P. B., Edwards, N. R., Müller, S. A., Oliver, K. I. C., Death, R. M., and Ridgwell, A.: Controls on the spatial distribution of oceanic  $\delta^{13}\text{C}_{\text{DIC}}$ , *Biogeosciences*, 10, 1815–1833, doi:10.5194/bg-10-1815-2013, 2013.
- Hugelius, G., Strauss, J., Zubrzycki, S., Harden, J. W., Schuur, E. A. G., Ping, C.-L., Schirmermeister, L., Grosse, G., Michaelson, G. J., Koven, C. D., O'Donnell, J. A., Elberling, B., Mishra, U., Camill, P., Yu, Z., Palmtag, J., and Kuhry, P.: Estimated stocks of circumpolar permafrost carbon with quantified uncertainty ranges and identified data gaps, *Biogeosciences*, 11, 6573–6593, doi:10.5194/bg-11-6573-2014, 2014.
- Hurrell, J. W., Holland, M. M., Gent, P. R., Ghan, S., Kay, J. E., Kushner, P. J., Lamarque, J.-F., Large, W. G., Lawrence, D., Lindsay, K., Lipscomb, W. H., Long, M. C., Mahowald, N., Marsh, D. R., Neale, R. B., Rasch, P., Vavrus, S., Vertenstein, M., Bader, D., Collins, W. D., Hack, J. J., Kiehl, J., and Marshall, S.: The Community Earth System Model: A framework for collaborative research, *B. Am. Meteorol. Soc.*, 94, 1339–1360, 2013.
- Hurt, G. C., Frolking, S., Fearon, M. G., Moore, B., Shevliakova, E., Malyshev, S., Pacala, S. W., and Houghton, R. A.: The underpinnings of land-use history: three centuries of global gridded land-use transitions, wood-harvest activity, and resulting secondary lands, *Glob. Change Biol.*, 12, 1208–1229, 2006.
- Jahn, A., Lindsay, K., Giraud, X., Gruber, N., Otto-Bliesner, B. L., Liu, Z., and Brady, E. C.: Carbon isotopes in the ocean model of the Community Earth System Model (CESM1), *Geosci. Model Dev.*, 8, 2419–2434, doi:10.5194/gmd-8-2419-2015, 2015.
- Joos, F. and Bruno, M.: Long-term variability of the terrestrial and oceanic carbon sinks and the budgets of the carbon isotopes <sup>13</sup>C and <sup>14</sup>C, *Global Biogeochem. Cy.*, 12, 277–295, doi:10.1029/98GB00746, 1998.
- Joos, F., Prentice, I., Sitch, S., Meyer, R., Hooss, G., Plattner, G., Gerber, S., and Hasselmann, K.: Global warming feedbacks on terrestrial carbon uptake under the Intergovernmental Panel on Climate Change (IPCC) emission scenarios, *Global Biogeochem. Cy.*, 15, 891–907, 2001.
- Joos, F., Gerber, S., Prentice, I., Otto-Bliesner, B., and Valdes, P.: Transient simulations of Holocene atmospheric carbon dioxide and terrestrial carbon since the Last Glacial Maximum, *Global Biogeochem. Cy.*, 18, doi:10.1029/2003GB002156, 2004.
- Kaplan, J. O., Prentice, I. C., and Buchmann, N.: The stable carbon isotope composition of the terrestrial biosphere: Modeling at scales from the leaf to the globe, *Global Biogeochem. Cy.*, 16, 8-1–8-11, 2002.
- Keel, S. G., Pepin, S., Leuzinger, S., and Körner, C.: Stomatal conductance in mature deciduous forest trees exposed to elevated CO<sub>2</sub>, *Trees*, 21, 151, doi:10.1007/s00468-006-0106-y, 2006.
- Keel, S. G., Joos, F., Spahni, R., Saurer, M., Weigt, R. B., and Klesse, S.: Simulating oxygen isotope ratios in tree ring cellulose using a dynamic global vegetation model, *Biogeosciences*, 13, 3869–3886, doi:10.5194/bg-13-3869-2016, 2016.
- Keeling, C. D., Mook, W. G., and Tans, P. P.: Recent trends in the <sup>13</sup>C / <sup>12</sup>C ratio of atmospheric carbon dioxide, *Nature*, 277, 121–123, doi:10.1038/277121a0, 1979.
- Keeling, C. D., Bacastow, R. B., Carter, A. F., Piper, S. C., Whorf, T. P., Heimann, M., Mook, W. G., and Roeloffzen, H.: A three dimensional model of atmospheric CO<sub>2</sub> transport based on observed winds: 1. Analysis of observational data, in: *Aspects of Climate Variability in the Pacific and the Western Americas*, edited by: Peterson, D. H., 165–236, American Geophysical Union, 1989.
- Keenan, T. F., Hollinger, D. Y., Bohrer, G., Dragoni, D., Munger, J. W., Schmid, H. P., and Richardson, A. D.: Increase in forest water-use efficiency as atmospheric carbon dioxide concentrations rise, *Nature*, 499, 324–327, doi:10.1038/nature12291, 2013.
- Kennett, J. P. and Stott, L. D.: Abrupt deep-sea warming, palaeoceanographic changes and benthic extinctions at the end of the Palaeocene, *Nature*, 353, 225–229, doi:10.1038/353225a0, 1991.



- Kimak, A. and Leuenberger, M.: Are carbohydrate storage strategies of trees traceable by early–latewood carbon isotope differences?, *Trees*, 29, 859–870, doi:10.1007/s00468-015-1167-6, 2015.
- Klein, T., Bader, M. K.-F., Leuzinger, S., Mildner, M., Schleppei, P., Siegwolf, R. T., and Körner, C.: Growth and carbon relations of mature *Picea abies* trees under 5 years of free-air CO<sub>2</sub> enrichment, *J. Ecol.*, 104, 1720–1733, doi:10.1111/1365-2745.12621, 2016.
- Knauer, J., Zaehle, S., Reichstein, M., Medlyn, B. E., Forkel, M., Hagemann, S., and Werner, C.: The response of ecosystem water-use efficiency to rising atmospheric CO<sub>2</sub> concentrations: sensitivity and large-scale biogeochemical implications, *New Phytol.*, 213, 1654–1666, doi:10.1111/nph.14288, 2017.
- Knorre, A. A., Siegwolf, R. T. W., Saurer, M., Sidorova, O. V., Vaganov, E. A., and Kirilyanov, A. V.: Twentieth century trends in tree ring stable isotopes ( $\delta^{13}\text{C}$  and  $\delta^{18}\text{O}$ ) of *Larix sibirica* under dry conditions in the forest steppe in Siberia, *J. Geophys. Res.-Bioge.*, 115, G03002, doi:10.1029/2009JG000930, 2010.
- Korte, C. and Kozur, H. W.: Carbon-isotope stratigraphy across the Permian–Triassic boundary: A review, *J. Asian Earth Sci.*, 39, 215–235, doi:10.1016/j.jseaes.2010.01.005, 2010.
- Koven, C. D., Riley, W. J., Subin, Z. M., Tang, J. Y., Torn, M. S., Collins, W. D., Bonan, G. B., Lawrence, D. M., and Swenson, S. C.: The effect of vertically resolved soil biogeochemistry and alternate soil C and N models on C dynamics of CLM4, *Biogeosciences*, 10, 7109–7131, doi:10.5194/bg-10-7109-2013, 2013.
- Koven, C. D., Chambers, J. Q., Georgiou, K., Knox, R., Negron-Juarez, R., Riley, W. J., Arora, V. K., Brovkin, V., Friedlingstein, P., and Jones, C. D.: Controls on terrestrial carbon feedbacks by productivity versus turnover in the CMIP5 Earth System Models, *Biogeosciences*, 12, 5211–5228, doi:10.5194/bg-12-5211-2015, 2015a.
- Koven, C. D., Lawrence, D. M., and Riley, W. J.: Permafrost carbon-climate feedback is sensitive to deep soil carbon decomposability but not deep soil nitrogen dynamics, *P. Natl. Acad. Sci. USA*, 112, 3752–3757, 2015b.
- Krakauer, N. Y., Randerson, J. T., Primeau, F. W., Gruber, N., and Menemenlis, D.: Carbon isotope evidence for the latitudinal distribution and wind speed dependence of the air-sea gas transfer velocity, *Tellus B*, 58, 390–417, doi:10.1111/j.1600-0889.2006.00223.x, 2006.
- Lai, C.-T., Riley, W., Owensby, C., Ham, J., Schauer, A., and Ehleringer, J. R.: Seasonal and interannual variations of carbon and oxygen isotopes of respired CO<sub>2</sub> in a tallgrass prairie: Measurements and modeling results from 3 years with contrasting water availability, *J. Geophys. Res.-Atmos.*, 111, D08S06, doi:10.1029/2005JD006436, 2006.
- Lambers, H., Chapin, F. S., and Pons, T. L.: *Plant Physiological Ecology*, Springer, New York, 2008.
- Leavitt, S. W., Chase, T. N., Rajagopalan, B., Lee, E., Lawrence, P. J., and Woodhouse, C. A.: Southwestern U.S. drought maps from pinyon tree-ring carbon isotopes, *Eos T.*, 88, 39–40, doi:10.1029/2007EO040005, 2007.
- Leonardi, S., Gentilesca, T., Guerrieri, R., Ripullone, F., Magnani, F., Mencuccini, M., Noiye, T. V., and Borghetti, M.: Assessing the effects of nitrogen deposition and climate on carbon isotope discrimination and intrinsic water-use efficiency of angiosperm and conifer trees under rising CO<sub>2</sub> conditions, *Glob. Change Biol.*, 18, 2925–2944, doi:10.1111/j.1365-2486.2012.02757.x, 2012.
- Le Quéré, C., Moriarty, R., Andrew, R. M., Canadell, J. G., Sitch, S., Korsbakken, J. I., Friedlingstein, P., Peters, G. P., Andres, R. J., Boden, T. A., Houghton, R. A., House, J. I., Keeling, R. F., Tans, P., Arneeth, A., Bakker, D. C. E., Barbero, L., Bopp, L., Chang, J., Chevallier, F., Chini, L. P., Ciais, P., Fader, M., Feely, R. A., Gkritzalis, T., Harris, I., Hauck, J., Ilyina, T., Jain, A. K., Kato, E., Kitidis, V., Klein Goldewijk, K., Koven, C., Landschützer, P., Lauvset, S. K., Lefèvre, N., Lenton, A., Lima, I. D., Metzl, N., Millero, F., Munro, D. R., Murata, A., Nabel, J. E. M. S., Nakaoka, S., Nojiri, Y., O'Brien, K., Olsen, A., Ono, T., Pérez, C. F., Pfeil, B., Pierrot, D., Poulter, B., Rehder, G., Rödenbeck, C., Saito, S., Schuster, U., Schwinger, J., Séférian, R., Steinhoff, T., Stocker, B. D., Sutton, A. J., Takahashi, T., Tilbrook, B., van der Laan-Luijkx, I. T., van der Werf, G. R., van Heuven, S., Vandemark, D., Viovy, N., Wiltshire, A., Zaehle, S., and Zeng, N.: Global Carbon Budget 2015, *Earth Syst. Sci. Data*, 7, 349–396, doi:10.5194/essd-7-349-2015, 2015.
- Leuenberger, M.: To what extent can ice core data contribute to the understanding of plant ecological developments of the past?, in: *Stable Isotopes as Indicators of Ecological Change*, edited by: Dawson, T. and Siegwolf, R., 211–233, Elsevier, Amsterdam, 2007.
- Lévesque, M., Siegwolf, R., Saurer, M., Eilmann, B., and Rigling, A.: Increased water-use efficiency does not lead to enhanced tree growth under xeric and mesic conditions, *New Phytol.*, 203, 94–109, doi:10.1111/nph.12772, 2014.
- Liberloo, M., Tulva, I., Raim, O., Kull, O., and Ceulemans, R.: Photosynthetic stimulation under long-term CO<sub>2</sub> enrichment and fertilization is sustained across a closed *Populus* canopy profile (EUROFACE), *New Phytol.*, 173, 537–549, doi:10.1111/j.1469-8137.2006.01926.x, 2007.
- Liu, J., Chen, F., Chen, J., Zhang, X., Liu, J., and Bloemendal, J.: Weakening of the East Asian summer monsoon at 1000–1100 A.D. within the Medieval Climate Anomaly: Possible linkage to changes in the Indian Ocean-western Pacific, *J. Geophys. Res.-Atmos.*, 119, 2209–2219, 2014a.
- Liu, X., Wang, W., Xu, G., Zeng, X., Wu, G., Zhang, X., and Qin, D.: Tree growth and intrinsic water-use efficiency of inland riparian forests in northwestern China: evaluation via  $\delta^{13}\text{C}$  and  $\delta^{18}\text{O}$  analysis of tree rings, *Tree Physiol.*, 34, 966–980, doi:10.1093/treephys/tpu067, 2014b.
- Lloyd, J. and Farquhar, G.:  $^{13}\text{C}$  discrimination during CO<sub>2</sub> assimilation by the terrestrial biosphere, *Oecologia*, 99, 201–215, doi:10.1007/BF00627732, 1994.
- Loader, N., Young, G., Grudd, H., and McCarroll, D.: Stable carbon isotopes from Torneträsk, northern Sweden provide a millennial length reconstruction of summer sunshine and its relationship to Arctic circulation, *Quaternary Sci. Rev.*, 62, 97–113, 2013.
- MacFarling Meure, C., Etheridge, D., Trudinger, C., Steele, P., Langenfelds, R., van Ommen, T., Smith, A., and Elkins, J.: Law Dome CO<sub>2</sub>, CH<sub>4</sub> and N<sub>2</sub>O ice core records extended to 2000 years BP, *Geophys. Res. Lett.*, 33, L14810, doi:10.1029/2006GL026152, 2006.
- Marshall, J. D., Brooks, J. R., and Lajtha, K.: Sources of Variation in the Stable Isotopic Composition of Plants, 22–60, Blackwell Publishing Ltd, doi:10.1002/9780470691854.ch2, 2008.

- McCarroll, D. and Loader, N. J.: Stable isotopes in tree rings, *Quaternary Sci. Rev.*, 23, 771–801, 2004.
- Medlyn, B. E., Duursma, R. A., Eamus, D., Ellsworth, D. S., Colin Prentice, I., Barton, C. V. M., Crous, K. Y., de Angelis, P., Freeman, M., and Wingate, L.: Reconciling the optimal and empirical approaches to modelling stomatal conductance, *Glob. Change Biol.*, 17, 2134–2144, doi:10.1111/j.1365-2486.2010.02375.x, 2011.
- Menviel, L. and Joos, F.: Toward explaining the Holocene carbon dioxide and carbon isotope records: Results from transient ocean carbon cycle-climate simulations, *Paleoceanography*, 27, PA1207, doi:10.1029/2011PA002224, 2012.
- Menviel, L., Joos, F., and Ritz, S.: Simulating atmospheric CO<sub>2</sub>, <sup>13</sup>C and the marine carbon cycle during the Last Glacial–Interglacial cycle: possible role for a deepening of the mean remineralization depth and an increase in the oceanic nutrient inventory, *Quaternary Sci. Rev.*, 56, 46–68, doi:10.1016/j.quascirev.2012.09.012, 2012.
- Miner, G. L., Bauerle, W. L., and Baldocchi, D. D.: Estimating the sensitivity of stomatal conductance to photosynthesis: a review, *Plant Cell Environ.*, doi:10.1111/pce.12871, online first, 2017.
- Monteith, J. L.: A reinterpretation of stomatal responses to humidity, *Plant Cell Environ.*, 18, 357–364, doi:10.1111/j.1365-3040.1995.tb00371.x, 1995.
- Negrón-Juárez, R. I., Koven, C. D., Riley, W. J., Knox, R. G., and Chambers, J. Q.: Observed allocations of productivity and biomass, and turnover times in tropical forests are not accurately represented in CMIP5 Earth system models, *Environ. Res. Lett.*, 10, 064017, doi:10.1088/1748-9326/10/6/064017, 2015.
- Oleson, K. W., Lawrence, D. M., B, G., Flanner, M. G., Kluzek, E., J, P., Levis, S., Swenson, S. C., Thornton, E., Feddema, J., Heald, C. L., Francois Lamarque, J., Yue Niu, G., Qian, T., Running, S., Sakaguchi, K., Yang, L., Zeng, X., and Zeng, X.: Technical Description of version 4.0 of the Community Land Model (CLM), NCAR/TN-478+STR, Tech. rep., National Center for Atmospheric Research (NCAR), Boulder, USA, 2010.
- Oleson, K. W., Lawrence, D. M., Bonan, G. B., Drewniak, B., Huang, M., Koven, C. D., Levis, S., Li, F., Riley, W. J., Subin, Z. M., Swenson, S. C., Thornton, P. E., Bozbiyik, A., Fisher, R., Kluzek, E., Lamarque, J.-F., Lawrence, P. J., Leung, L. R., Lipscomb, W., Muszala, S., Ricciuto, D. M., Sacks, W., Sun, Y., Tang, J., and Yang, Z.-L.: Technical description of version 4.5 of the Community Land Model (CLM), NCAR/TN-503+STR, Tech. rep., National Center for Atmospheric Research (NCAR), Boulder, USA, 2013.
- Olson, R., Scurlock, J., Prince, S., Zheng, D., and Johnson, K.: NPP multi-biome: NPP and driver data for ecosystem model-data intercomparison, R2, doi:10.3334/ORNLDAAC/615, 2013.
- Pataki, D. E., Ehleringer, J. R., Flanagan, L. B., Yakir, D., Bowling, D. R., Still, C. J., Buchmann, N., Kaplan, J. O., and Berry, J. A.: The application and interpretation of Keeling plots in terrestrial carbon cycle research, *Global Biogeochem. Cy.*, 17, 1022, doi:10.1029/2001GB001850, 2003.
- Peterson, C. D., Lisiecki, L. E., and Stern, J. V.: Deglacial whole-ocean  $\delta^{13}\text{C}$  change estimated from 480 benthic foraminiferal records, *Paleoceanography*, 29, 549–563, doi:10.1002/2013PA002552, 2014.
- Peñuelas, J., Canadell, J. G., and Ogaya, R.: Increased water-use efficiency during the 20th century did not translate into enhanced tree growth, *Global Ecol. Biogeogr.*, 20, 597–608, doi:10.1111/j.1466-8238.2010.00608.x, 2011.
- Prentice, I. C., Dong, N., Gleason, S. M., Maire, V., and Wright, I. J.: Balancing the costs of carbon gain and water transport: testing a new theoretical framework for plant functional ecology, *Ecol. Lett.*, 17, 82–91, doi:10.1111/ele.12211, 2014.
- Raczka, B., Duarte, H. F., Koven, C. D., Ricciuto, D., Thornton, P. E., Lin, J. C., and Bowling, D. R.: An observational constraint on stomatal function in forests: evaluating coupled carbon and water vapor exchange with carbon isotopes in the Community Land Model (CLM4.5), *Biogeosciences*, 13, 5183–5204, doi:10.5194/bg-13-5183-2016, 2016.
- Reich, P. B., Hobbie, S. E., and Lee, T. D.: Plant growth enhancement by elevated CO<sub>2</sub> eliminated by joint water and nitrogen limitation, *Nat. Geosci.*, 7, 920–924, 2014.
- Robertson, I., Rolfe, J., Switsur, V. R., Carter, A. H. C., Hall, M. A., Barker, A. C., and Waterhouse, J. S.: Signal strength and climate relationships in <sup>13</sup>C / <sup>12</sup>C ratios of tree ring cellulose from oak in southwest Finland, *Geophys. Res. Lett.*, 24, 1487–1490, doi:10.1029/97GL01293, 1997.
- Rubino, M., Etheridge, D. M., Trudinger, C. M., Allison, C. E., Battle, M. O., Langenfelds, R. L., Steele, L. P., Curran, M., Bender, M., White, J. W. C., Jenk, T. M., Blunier, T., and Francey, R. J.: A revised 1000 year atmospheric  $\delta^{13}\text{C}$ -CO<sub>2</sub> record from Law Dome and South Pole, Antarctica, *J. Geophys. Res.-Atmos.*, 118, 8482–8499, doi:10.1002/jgrd.50668, 2013.
- Ruosch, M., Spahni, R., Joos, F., Henne, P. D., van der Knaap, W. O., and Tinner, W.: Past and future evolution of Abies alba forests in Europe – comparison of a dynamic vegetation model with palaeo data and observations, *Glob. Change Biol.*, 22, 727–740, doi:10.1111/gcb.13075, 2016.
- Sato, H., Kumagai, T., Takahashi, A., and Katul, G. G.: Effects of different representations of stomatal conductance response to humidity across the African continent under warmer CO<sub>2</sub>-enriched climate conditions, *J. Geophys. Res.-Biogeo.*, 120, 979–988, doi:10.1002/2014JG002838, 2015.
- Saurer, M., Cherubini, P., and Siegwolf, R.: Oxygen isotopes in tree rings of Abies alba: The climatic significance of inter-decadal variations, *J. Geophys. Res.-Atmos.*, 105, 12461–12470, doi:10.1029/2000JD900160, 2000.
- Saurer, M., Siegwolf, R. T. W., and Schweingruber, F. H.: Carbon isotope discrimination indicates improving water-use efficiency of trees in northern Eurasia over the last 100 years, *Glob. Change Biol.*, 10, 2109–2120, 2004.
- Saurer, M., Kress, A., Leuenberger, M., Rinne, K. T., Treydte, K. S., and Siegwolf, R. T. W.: Influence of atmospheric circulation patterns on the oxygen isotope ratio of tree rings in the Alpine region, *J. Geophys. Res.-Biogeo.*, 117, D05118, doi:10.1029/2011JD016861, 2012.
- Saurer, M., Spahni, R., Frank, D. C., Joos, F., Leuenberger, M., Loader, N. J., McCarroll, D., Gagen, M., Poulter, B., Siegwolf, R. T., Andreu-Hayles, L., Boettger, T., Dorado Linan, I., Fairchild, I. J., Friedrich, M., Gutierrez, E., Haupt, M., Hiltasvuori, E., Heinrich, I., Helle, G., Grudd, H., Jalkanen, R., Levanić, T., Linderholm, H. W., Robertson, I., Sonninen, E., Treydte, K., Waterhouse, J. S., Woodley, E. J., Wynn, P. M., and Young, G. H.: Spatial variability and temporal trends in water-use efficiency of European forests, *Glob. Change Biol.*, 20, 3700–3712, 2014.

- Scheidegger, Y., Saurer, M., Bahn, M., and Siegwolf, R.: Linking stable oxygen and carbon isotopes with stomatal conductance and photosynthetic capacity: a conceptual model, *Oecologia*, 125, 350–357, doi:10.1007/s004420000466, 2000.
- Schmittner, A. and Somes, C. J.: Complementary constraints from carbon ( $^{13}\text{C}$ ) and nitrogen ( $^{15}\text{N}$ ) isotopes on the glacial ocean's soft-tissue biological pump, *Paleoceanography*, 31, 669–693, doi:10.1002/2015PA002905, 2016.
- Schmittner, A., Gruber, N., Mix, A. C., Key, R. M., Tagliabue, A., and Westberry, T. K.: Biology and air–sea gas exchange controls on the distribution of carbon isotope ratios ( $\delta^{13}\text{C}$ ) in the ocean, *Biogeosciences*, 10, 5793–5816, doi:10.5194/bg-10-5793-2013, 2013.
- Schneider, R., Schmitt, J., Köhler, P., Joos, F., and Fischer, H.: A reconstruction of atmospheric carbon dioxide and its stable carbon isotopic composition from the penultimate glacial maximum to the last glacial inception, *Clim. Past*, 9, 2507–2523, doi:10.5194/cp-9-2507-2013, 2013.
- Scholze, M., Kaplan, J. O., Knorr, W., and Heimann, M.: Climate and interannual variability of the atmosphere–biosphere  $^{13}\text{CO}_2$  flux, *Geophys. Res. Lett.*, 30, 1097, doi:10.1029/2002GL015631, 2003.
- Scholze, M., Ciais, P., and Heimann, M.: Modeling terrestrial  $^{13}\text{C}$  cycling: Climate, land use and fire, *Global Biogeochem. Cy.*, 22, GB1009, doi:10.1029/2006GB002899, 2008.
- Schubert, B. A. and Jähren, A. H.: Quantifying seasonal precipitation using high-resolution carbon isotope analyses in evergreen wood, *Geochim. Cosmochim. Ac.*, 75, 7291–7303, 2011.
- Shackleton, N. J.: Carbon-13 in *uvigerina*: Tropical rainforest history and the equatorial Pacific carbonate dissolution cycles, in: *The Fate of Fossil Fuel  $\text{CO}_2$  in the Ocean*, edited by: Andersen, N. R. and Malahoff, A., 401–428, Plenum, New York, 1977.
- Sidorova, O. V., Siegwolf, R. T. W., Saurer, M., Naurzbaev, M. M., and Vaganov, E. A.: Isotopic composition ( $\delta^{13}\text{C}$ ,  $\delta^{18}\text{O}$ ) in wood and cellulose of Siberian larch trees for early Medieval and recent periods, *J. Geophys. Res.-Biogeo.*, 113, G02019, doi:10.1029/2007JG000473, 2008.
- Sidorova, O. V., Siegwolf, R. T. W., Saurer, M., Shashkin, A. V., Knorre, A. A., Prokushkin, A. S., Vaganov, E. A., and Kirilyanov, A. V.: Do centennial tree-ring and stable isotope trends of *Larix gmelinii* (Rupr.) Rupr. indicate increasing water shortage in the Siberian north?, *Oecologia*, 161, 825–835, doi:10.1007/s00442-009-1411-0, 2009.
- Sidorova, O. V., Siegwolf, R. T. W., Saurer, M., Naurzbaev, M. M., Shashkin, A. V., and Vaganov, E. A.: Spatial patterns of climatic changes in the Eurasian north reflected in Siberian larch tree-ring parameters and stable isotopes, *Glob. Change Biol.*, 16, 1003–1018, doi:10.1111/j.1365-2486.2009.02008.x, 2010.
- Sidorova, O. V., Saurer, M., Myglan, V. S., Eichler, A., Schwikowski, M., Kirilyanov, A. V., Bryukhanova, M. V., Gerasimova, O. V., Kalugin, I. A., Daryin, A. V., and Siegwolf, R. T. W.: A multi-proxy approach for revealing recent climatic changes in the Russian Altai, *Clim. Dynam.*, 38, 175–188, doi:10.1007/s00382-010-0989-6, 2012.
- Sidorova, O. V., Siegwolf, R. T. W., Myglan, V. S., Ovchinnikov, D. V., Shishov, V. V., Helle, G., Loader, N. J., and Saurer, M.: The application of tree-rings and stable isotopes for reconstructions of climate conditions in the Russian Altai, *Climatic Change*, 120, 153–167, doi:10.1007/s10584-013-0805-5, 2013.
- Siegenthaler, U. and Joos, F.: Use of a simple model for studying oceanic tracer distributions and the global carbon cycle, *Tellus B*, 69, 186–207, doi:10.1034/j.1600-0889.1992.t01-2-00003.x, 1992.
- Silva, L. C. R. and Horwath, W. R.: Explaining global increases in water use efficiency: Why have we overestimated responses to rising atmospheric  $\text{CO}_2$  in natural forest ecosystems?, *PLoS ONE*, 8, 1–5, doi:10.1371/journal.pone.0053089, 2013.
- Sitch, S., Smith, B., Prentice, I., Arneth, A., Bondeau, A., Cramer, W., Kaplan, J., Levis, S., Lucht, W., Sykes, M., Thonicke, K., and Venevsky, S.: Evaluation of ecosystem dynamics, plant geography and terrestrial carbon cycling in the LPJ dynamic global vegetation model, *Glob. Change Biol.*, 9, 161–185, 2003.
- Sonnerup, R. E. and Quay, P. D.:  $^{13}\text{C}$  constraints on ocean carbon cycle models, *Global Biogeochem. Cy.*, 26, GB2014, doi:10.1029/2010GB003980, 2012.
- Spahni, R., Joos, F., Stocker, B. D., Steinacher, M., and Yu, Z. C.: Transient simulations of the carbon and nitrogen dynamics in northern peatlands: from the Last Glacial Maximum to the 21st century, *Clim. Past*, 9, 1287–1308, doi:10.5194/cp-9-1287-2013, 2013.
- Stocker, B. D., Roth, R., Joos, F., Spahni, R., Steinacher, M., Zehle, S., Bouwman, L., Xu-Ri, and Prentice, I. C.: Multiple greenhouse-gas feedbacks from the land biosphere under future climate change scenarios, *Nature Climate Change*, 3, 666–672, 2013.
- Strassmann, K. M., Joos, F., and Fischer, G.: Simulating effects of land use changes on carbon fluxes: past contributions to atmospheric  $\text{CO}_2$  increases and future commitments due to losses of terrestrial sink capacity, *Tellus B*, 60, 583–603, 2008.
- Streit, K., Siegwolf, R. T. W., Hagedorn, F., Schaub, M., and Buchmann, N.: Lack of photosynthetic or stomatal regulation after 9 years of elevated  $[\text{CO}_2]$  and 4 years of soil warming in two conifer species at the alpine treeline, *Plant Cell Environ.*, 37, 315–326, doi:10.1111/pce.12197, 2014.
- Suits, N. S., Denning, A. S., Berry, J. A., Still, C. J., Kaduk, J., Miller, J. B., and Baker, I. T.: Simulation of carbon isotope discrimination of the terrestrial biosphere, *Global Biogeochem. Cy.*, 19, GB1017, doi:10.1029/2003GB002141, 2005.
- Tagliabue, A. and Bopp, L.: Towards understanding global variability in ocean carbon-13, *Global Biogeochem. Cy.*, 22, GB1025, doi:10.1029/2007GB003037, 2008.
- Tans, P. P., De Jong, A. F. M., and Mook, W. G.: Natural atmospheric  $^{14}\text{C}$  variation and the Suess effect, *Nature*, 280, 826–828, doi:10.1038/280826a0, 1979.
- Thornton, P. E. and Rosenbloom, N. A.: Ecosystem model spin-up: Estimating steady state conditions in a coupled terrestrial carbon and nitrogen cycle model, *Ecol. Model.*, 189, 25–48, doi:10.1016/j.ecolmodel.2005.04.008, 2005.
- Tian, H., Lu, C., Yang, J., Banger, K., Huntzinger, D. N., Schwalm, C. R., Michalak, A. M., Cook, R., Ciais, P., Hayes, D., Huang, M., Ito, A., Jain, A. K., Lei, H., Mao, J., Pan, S., Post, W. M., Peng, S., Poulter, B., Ren, W., Ricciuto, D., Schaefer, K., Shi, X., Tao, B., Wang, W., Wei, Y., Yang, Q., Zhang, B., and Zeng, N.: Global patterns and controls of soil organic carbon dynamics as simulated by multiple terrestrial biosphere models: Current status and future directions, *Global Biogeochem. Cy.*, 29, 775–792, doi:10.1002/2014GB005021, 2015.

- Todd-Brown, K. E. O., Randerson, J. T., Post, W. M., Hoffman, F. M., Tarnocai, C., Schuur, E. A. G., and Allison, S. D.: Causes of variation in soil carbon simulations from CMIP5 Earth system models and comparison with observations, *Biogeosciences*, 10, 1717–1736, doi:10.5194/bg-10-1717-2013, 2013.
- Torn, M. S., Biraud, S. C., Still, C. J., Riley, W. J., and Berry, J. A.: Seasonal and interannual variability in  $^{13}\text{C}$  composition of ecosystem carbon fluxes in the U.S. Southern Great Plains, *Tellus B*, 63, 181–195, doi:10.1111/j.1600-0889.2010.00519.x, 2011.
- Townsend, A. R., Asner, G. P., White, J. W. C., and Tans, P. P.: Land use effects on atmospheric  $^{13}\text{C}$  imply a sizable terrestrial  $\text{CO}_2$  sink in tropical latitudes, *Geophys. Res. Lett.*, 29, 68–1–68–4, doi:10.1029/2001GL013454, 2002.
- Trahan, M. W. and Schubert, B. A.: Temperature-induced water stress in high-latitude forests in response to natural and anthropogenic warming, *Glob. Change Biol.*, 22, 782–791, doi:10.1111/gcb.13121, 2016.
- Treydte, K., Frank, D., Esper, J., Andreu, L., Bednarz, Z., Berninger, F., Boettger, T., D'Alessandro, C. M., Etien, N., Filot, M., Grabner, M., Guillemain, M. T., Gutierrez, E., Haupt, M., Helle, G., Hilasvuori, E., Jungner, H., Kalela-Brundin, M., Krapiec, M., Leuenberger, M., Loader, N. J., Masson-Delmotte, V., Pazdur, A., Pawelczyk, S., Pierre, M., Planells, O., Pukiene, R., Reynolds-Henne, C. E., Rinne, K. T., Saracino, A., Saurer, M., Sonninen, E., Stievenard, M., Switsur, V. R., Szczepanek, M., Szychowska-Krapiec, E., Todaro, L., Waterhouse, J. S., Weigl, M., and Schleser, G. H.: Signal strength and climate calibration of a European tree-ring isotope network, *Geophys. Res. Lett.*, 34, L24302, doi:10.1029/2007GL031106, 2007.
- Treydte, K. S., Schleser, G. H., Helle, G., Frank, D. C., Winiger, M., Haug, G. H., and Esper, J.: The twentieth century was the wettest period in northern Pakistan over the past millennium, *Nature*, 440, 1179–1182, doi:10.1038/nature04743, 2006.
- Treydte, K. S., Frank, D. C., Saurer, M., Helle, G., Schleser, G. H., and Esper, J.: Impact of climate and  $\text{CO}_2$  on a millennium-long tree-ring carbon isotope record, *Geochim. Cosmochim. Ac.*, 73, 4635–4647, doi:10.1016/j.gca.2009.05.057, 2009.
- Trudinger, C. M., Enting, I. G., Rayner, P. J., and Francey, R. J.: Kalman filter analysis of ice core data 2. Double deconvolution of  $\text{CO}_2$  and  $\delta^{13}\text{C}$  measurements, *J. Geophys. Res.-Atmos.*, 107, ACH5-1–ACH5-24, doi:10.1029/2001JD001112, 2002.
- Tschumi, T., Joos, F., Gehlen, M., and Heinze, C.: Deep ocean ventilation, carbon isotopes, marine sedimentation and the deglacial  $\text{CO}_2$  rise, *Clim. Past*, 7, 771–800, doi:10.5194/cp-7-771-2011, 2011.
- van der Velde, I. R., Miller, J. B., Schaefer, K., Masarie, K. A., Denning, S., White, J. W. C., Tans, P. P., Krol, M. C., and Peters, W.: Biosphere model simulations of interannual variability in terrestrial  $^{13}\text{C}/^{12}\text{C}$  exchange, *Global Biogeochem. Cy.*, 27, 637–649, doi:10.1002/gbc.20048, 2013.
- van der Velde, I. R., Miller, J. B., Schaefer, K., van der Werf, G. R., Krol, M. C., and Peters, W.: Terrestrial cycling of  $^{13}\text{CO}_2$  by photosynthesis, respiration, and biomass burning in SiBCASA, *Biogeosciences*, 11, 6553–6571, doi:10.5194/bg-11-6553-2014, 2014.
- Vardag, S. N., Hammer, S., and Levin, I.: Evaluation of 4 years of continuous  $\delta^{13}\text{C}(\text{CO}_2)$  data using a moving Keeling plot method, *Biogeosciences*, 13, 4237–4251, doi:10.5194/bg-13-4237-2016, 2016.
- Viovy, N.: CRU-NCEPv4 dataset, available at: [ftp://nacp.ornl.gov/synthesis/2009/frescati/model\\_driver/cru\\_ncep/analysis/](ftp://nacp.ornl.gov/synthesis/2009/frescati/model_driver/cru_ncep/analysis/) (last access: 20 May 2017), 2011.
- Voelker, S. L., Brooks, J. R., Meinzer, F. C., Anderson, R., Bader, M. K.-F., Battipaglia, G., Becklin, K. M., Beerling, D., Bert, D., Betancourt, J. L., Dawson, T. E., Domec, J.-C., Guyette, R. P., Körner, C., Leavitt, S. W., Linder, S., Marshall, J. D., Mildner, M., Ogée, J., Panyushkina, I., Plumpton, H. J., Pregitzer, K. S., Saurer, M., Smith, A. R., Siegwolf, R. T. W., Stambaugh, M. C., Talhelm, A. F., Tardif, J. C., Van de Water, P. K., Ward, J. K., and Wingate, L.: A dynamic leaf gas-exchange strategy is conserved in woody plants under changing ambient  $\text{CO}_2$ : evidence from carbon isotope discrimination in paleo and  $\text{CO}_2$  enrichment studies, *Glob. Change Biol.*, 22, 889–902, doi:10.1111/gcb.13102, 2016.
- Walker, X. J., Mack, M. C., and Johnstone, J. F.: Stable carbon isotope analysis reveals widespread drought stress in boreal black spruce forests, *Glob. Change Biol.*, 21, 3102–3113, doi:10.1111/gcb.12893, 2015.
- Wang, H., Prentice, I. C., Cornwell, W., Keenan, T., Davis, T., Wright, I., Evans, B., and Peng, C.: A universal model for carbon dioxide uptake by plants, *bioRxiv*, doi:10.1101/040246, 2016.
- Ward, J. K., Harris, J. M., Cerling, T. E., Wiedenhoeft, A., Lott, M. J., Dearing, M.-D., Coltrain, J. B., and Ehleringer, J. R.: Carbon starvation in glacial trees recovered from the La Brea tar pits, southern California, *P. Natl. Acad. Sci. USA*, 102, 690–694, doi:10.1073/pnas.0408315102, 2005.
- White, J., Vaughn, B., and Michel, S.: Stable isotopic composition of atmospheric carbon dioxide ( $^{13}\text{C}$  and  $^{18}\text{O}$ ) from the NOAA ESRL Carbon Cycle Cooperative Global Air Sampling Network, 1990–2014, University of Colorado, Institute of Arctic and Alpine Research (INSTAAR), available at: [ftp://afpt.cmdl.noaa.gov/data/trace\\_gases/co2c13/flask/surface/](ftp://afpt.cmdl.noaa.gov/data/trace_gases/co2c13/flask/surface/) (last access: 20 May 2017), 2015.
- Wingate, L., Ogée, J., Burlett, R., Bosc, A., Devaux, M., Grace, J., Loustau, D., and Gessler, A.: Photosynthetic carbon isotope discrimination and its relationship to the carbon isotope signals of stem, soil and ecosystem respiration, *New Phytol.*, 188, 576–589, 2010.
- Wong, S. C., Cowan, I. R., and Farquhar, G. D.: Stomatal conductance correlates with photosynthetic capacity, *Nature*, 282, 424–426, doi:10.1038/282424a0, 1979.
- Woodborne, S., Hall, G., Robertson, I., Patrut, A., Rouault, M., Loader, N. J., and Hofmeyr, M.: A 1000-year carbon isotope rainfall proxy record from South African baobab trees (*Adansonia digitata* L.), *PLoS ONE*, 10, 1–18, doi:10.1371/journal.pone.0124202, 2015.
- Xu-Ri and Prentice, I.: Terrestrial nitrogen cycle simulation with a dynamic global vegetation model, *Glob. Change Biol.*, 14, 1745–1764, doi:10.1111/j.1365-2486.2008.01625.x, 2008.
- Xu-Ri, Prentice, I. C., Spahni, R., and Niu, H. S.: Modelling terrestrial nitrous oxide emissions and implications for climate feedback, *New Phytol.*, 196, 472–488, doi:10.1111/j.1469-8137.2012.04269.x, 2012.
- Yang, X., Thornton, P. E., Ricciuto, D. M., and Hoffman, F. M.: Phosphorus feedbacks constraining tropical ecosystem responses

- to changes in atmospheric CO<sub>2</sub> and climate, *Geophys. Res. Lett.*, 43, 7205–7214, doi:10.1002/2016GL069241, 2016.
- Yang, Y., Siegwolf, R., and Koerner, C.: Species specific and environment induced variation of  $\delta^{13}\text{C}$  and  $\delta^{15}\text{N}$  in alpine plants, *Frontiers in Plant Science*, 6, doi:10.3389/fpls.2015.00423, 2015.
- Young, G. H. F., McCarroll, D., Loader, N. J., Gagen, M. H., Kirchhefer, A. J., and Demmler, J. C.: Changes in atmospheric circulation and the Arctic Oscillation preserved within a millennial length reconstruction of summer cloud cover from northern Fennoscandia, *Clim. Dynam.*, 39, 495–507, doi:10.1007/s00382-011-1246-3, 2012.
- Zhu, Q., Iversen, C. M., Riley, W. J., Slette, I. J., and Vander Stel, H. M.: Root traits explain observed tundra vegetation nitrogen uptake patterns: Implications for trait-based land models, *J. Geophys. Res.-Biogeo.*, 121, 3101–3112, doi:10.1002/2016JG003554, 2016a.
- Zhu, Q., Riley, W. J., Tang, J., and Koven, C. D.: Multiple soil nutrient competition between plants, microbes, and mineral surfaces: model development, parameterization, and example applications in several tropical forests, *Biogeosciences*, 13, 341–363, doi:10.5194/bg-13-341-2016, 2016b.
- Zhu, Q., Riley, W. J., and Tang, J.: A new theory of plant–microbe nutrient competition resolves inconsistencies between observations and model predictions, *Ecol. Appl.*, 27, 875–886, doi:10.1002/eap.1490, 2017.